



The Villager

Issue 11 • 2021

**ANNUAL
GENERAL
MEETING
18 NOVEMBER**

**Christmas Market
Saturday 11 December**

A Letter to High School Students

2021 Car of the Year Winners

Hanli Prinsloo. *Freediver.*

Holder of 11 South African
free-diving records.
Spent the last two decades
holding her breath to protect
the world's oceans.

It is those who
live their lives *remarkably*
who inspire our own.

Peter Varrie
082 457 7416
peter.varrie@pamgolding.co.za

Live Remarkable.


PAM GOLDING
PROPERTIES

The Villager focuses on Irene Farm Villages. The magazine is distributed digitally to each resident on the estate. The magazine is co-ordinated and published by Estates in Africa (Pty) Ltd trading as EIA Publishing, on behalf of the Home Owners Association of Irene Farm Villages. The opinions of contributors and personnel of Estates in Africa (Pty) Ltd do not necessarily reflect those of the HOA of Irene Farm Villages.

Publisher

Nico Maritz
E-mail: nico@eiapublishing.co.za

Editor

Bev Hermanson
E-mail: bev@eiapublishing.co.za

Marketing & National Sales Manager

Martin Fourie - Cell: 072 835 8405
E-mail: martin@eiapublishing.co.za
Office: 012 997 2712

Advertising Sales

Justin Surendorff - Cell: 082 815 0593
E-mail: justins@nowmedia.co.za

Tyron Fuschier - Cell: 076 380 8795
E-mail: tyronf@eiapublishing.co.za

Production Co-ordinator

Chris Grant
E-mail: chrisg@nowmedia.co.za

Graphic Design

Diane van Noort
E-mail: d2vn@mweb.co.za

ESTATES IN AFRICA (PTY) LTD HEAD OFFICE:

32 Fricker Road, Illovo, Johannesburg
www.eiapublishing.co.za

Deadline for Advertising in the December 2021 edition:
15 November 2021



Cover photograph by Madeleine Du Plessis

Contents

Message from the Estate Office	2
Progress of the South Gate Construction	8
Financials	10
Memories are made outdoors	12
WIN a Braai Competition	14
The SAGMJ Car of the Year 2021 Winners	16
Succulent Summer Cupcakes	20
A Letter to High School Students	23
Smalls and Irene Service Providers	26
Accredited Estate Agents	27
Important Contact Numbers	27
James Clarke: Performance-enhancing Drugs	28



LÉANE GRAAFF
Property Principal

083 457 3184

r.graaff@absamail.co.za

*let me lead
you home!*

Please contact me for a viewing!



NEW LISTING

R4,2 million
Stunner with 4 spacious bedrooms of which 2 are en suite, entertainment room with built in braai, Jacuzzi, SQ, Formal lounge with fire place, TV room, Study guest toilet and lots more.



NEW LISTING

R3,450mil
4 bedrooms, lounge with fireplace, dining room, TV room, kitchen with Smeg stove, spacious treed garden. A must view.



NEW LISTING

R2,995mil
Situated on a spacious stand. 3 beds, 2 baths, guest toilet, double garage, study nook, kitchen with granite tops, scullery that can fit all appliances. Braai room with built in bar. Bargain Bargain!

Dear Residents

It is a privilege for me, as Assistant Estate Manager, to be the author of this article for the November edition of *The Villager*.

One of the most wonderful smells is that first smell of rain, early in the morning at the beginning of spring. After the fabulous rain that fell during October, everything around us is turning to all shades of green. Green is one of the most common colours in nature, as most trees and vegetation are green due to chlorophyll, a chemical that the plants use to convert sunlight into energy. Let us all use our bright sunny days, convert them into energy and enjoy life out in our gardens. It is wonderful to drive through the estate and see how all the lawns have turned green, almost overnight, and everyone is out, working in their gardens.

One of the plants in the estate that has drawn my attention is the Monkey or Baboon Tail.

The stem, which looks like a burnt-out stump, gives the plant its descriptive and quite apt name. The shrub can go years without blooming but, in the right

conditions, it will sprout long, linear leaves and can produce lovely pink, mauve or white flowers, as can be seen in the photo of the plant taken in the veld at Royal Oak.

The pretty flowers have a delicious vanilla smell, but one has to get up close and personal with the flower to smell the fragrance.

According to an online source of the South African National Biodiversity Institute, various parts of the shrub have been used traditionally for their medicinal properties, from relieving asthma to acting as an anti-

inflammatory or analgesic. The tough stems have also been used traditionally to make brushes and mats.

As you read this article, the move back to the South Gate and the North Gate from the containers should be in full swing. All the Irene Farm Villages staff and the Security Officers are eagerly looking forward to moving back to the newly built South Gate, as it has been a challenging five months working from the garage storeroom, the containers and next to quite a dusty environment.

After the move, the Administrative Office will be at the South Gate, previously known as the Main Gate. The Boardroom will be situated at the North Gate.

The North Gate will be open to:

- All the residents
- All visitors/deliveries and emergency contractors with a code (pin).

The South Gate will be open to:

- All the residents
- All visitors and contractors with a code (pin).
- All contractors who are registered on the biometric system.



Anna-Mart Steyn



Baboon Tail



Baboon Tail with flowers



MyMTN Home

NEW

High-speed uncapped data with our MyMTN Home deals

NEW

MEGA



UNCAPPED**

10Mbps
R499
PMx24

MyMTN Home
Fixed LTE Uncapped
10Mbps
MAX SPEEDS
**400GB
FAIR USE POLICY

Fixed LTE

NEW



UNCAPPED**

20Mbps
R699
PMx24

MyMTN Home
Fixed LTE Uncapped
20Mbps
MAX SPEEDS
**600GB
FAIR USE POLICY

Fixed LTE

NEW



UNCAPPED**

30Mbps
R799
PMx24

MyMTN Home
Fixed LTE Uncapped
30Mbps
MAX SPEEDS
**700GB
FAIR USE POLICY

Fixed LTE

THESE DEALS
INCLUDE

FREE
Fixed LTE
Wi-Fi router



Scan the QR code
to see if your router
qualifies and to check the
coverage in your area

MyMTN Home data plans have been carefully crafted to suit your every online need so you can connect the whole household and stream, game, study, work and more.

Plus, we make use of the latest 4G LTE technology and offer exceptional home routers to deliver the best wireless internet to your home.

Call 083 123 3667

Click mtn.co.za

Visit MTN stores



go big
goBozza
everywhere you go



MTN Terms and Conditions apply. *Based on uMlout Best in Test Certification Feb 2020. MyMTN Home Fixed LTE Uncapped: Available from 01/10/2021 until discontinued by MTN. The uncapped, speed-based fixed LTE price plans are available to customers who sign up, add a line or upgrade to the selected price plans. Customers who take up the uncapped data plans in the first 3 months of the promotion are eligible for a free router. The data plans are subject to a Fair Use Policy and tiered based on selected price plans. SIM-only and month-to-month options will be available where customers can bring or buy their own device. Customers who take up the SIM-only deal and choose to bring or buy their own device must use MTN approved and tested devices which are compatible with LTE. Customers must be within the new Fixed LTE coverage areas in order to participate in the offering. Clawback charges will apply if cancellation occurs within 24 months of the contract. For full Terms and Conditions, visit mtn.co.za. E&OE.

- All the contractors who need to register on the access system must visit the South Gate for registration purposes.
- All abnormal vehicles must enter at the South Gate and exit at the North Gate, due to the special lanes that were constructed for abnormal vehicles.

Further information will be communicated when the gates are fully functional.

A serious accident occurred just before the robot intersection at the North Gate. Although the accident did not happen in the intersection, it is important to note that, sometimes, vehicles in Pierre van Ryneveld Road don't stop when the robot turns yellow and still go through the intersection although the robot has already turned red. Sadly, this does not only happen at the robot at the North Gate, but it is an occurrence all over Pretoria. Please be cautious when driving through intersections.

As we head back into the summer season, the days are becoming longer and the nights warmer, thus residents are starting to be more active, walking and jogging in the streets and on the walking trail path.

Unfortunately, the circumstances also provide the opportunity for people to move around and do harm. If you see

any activities of concern, please contact the Security Manager at 082 838 7779 so that he can investigate the activity. This enables the Estate Management to act on the information regarding a specific incident.

The Estate Management has noticed that many visitors stop at the entrance gate without having their driver's license available to be scanned. We extend a friendly request to please inform your visitors that they must have their driver's license ready and available before they reach the gate.



With regard to contractors, there are contractors who bring workers without valid identification documentation to work in the estate. These persons then cannot be admitted to the estate as unidentified individuals pose a security risk.

The Estate Management kindly requests that the residents inform their contractors – plumbers, electricians, painters – that all their workers must

have valid identification documentation to be allowed to enter the estate.



The recycling programme in Irene Farm Villages is well supported by the residents. The Estate Management encourages you, as residents, to take part in this initiative. The green bags are available at the office. The recycling truck drives through the estate on Thursdays. Place your green bag containing recyclable products on the sidewalk. The recyclers will then provide you with a new bag for the next week. Should you be a new resident at the estate, please collect your green recycling bag at the administration office.

The recycling statistic for September is 9 500kg. The overall monthly average for 2021 has increased by 47kg to 8 800kg.

The following products can be recycled:

- Paper products
- Cardboard boxes and cartons
- Plastic and plastic bottles
- Cans
- Glass bottles
- e-Waste
- Large appliances
- Moving boxes

Minimal sorting of waste is required. Remade does the sorting for you. Their dedicated vehicle fleet collects all grades of recyclables, including paper, plastic, cans, and glass. They further collect a wide range of e-Waste, large appliances and moving boxes. These larger recyclable items, like cardboard boxes, e-Waste, or electrical appliances, can be put next to the bags to be collected with the rest.

According to the Department of Environmental Affairs, South Africa can recycle 65% of its waste, which is music to our ears. However, of 90% of landfill waste, only 10% is currently recycled. Most disturbing is that the landfill sites in Johannesburg, Tshwane and Cape Town are reporting less than 10 years of useful life left in them.

With little or no opportunities to build new ones, or further distances to travel to other landfill sites, it's safe to say that



Like walking on sunshine. But riding on it.

More of what you love. The new 911 GTS models.



For more information
please scan the QR code.



Porsche Centre Pretoria
452 Botterklapper Street,
Off Lynnwood Road, The Willows
Telephone 012 816 7600
www.porschepretoria.com

911 Carrera GTS: Combined fuel consumption: 9.7 l/100 km; Power: 353 kW (480 hp); Torque: 570 Nm; 0-100 km/h: 3.4 sec; Top speed: 311 km/h
Priced from R2 290 000 including a 3 year/100,000 km Driveplan.



PORSCHE

we're running out of space at our landfills. Remade Recycling will work closely with you to find a solution that is the most suitable, cost-effective, and attainable.

Estate recycling collection is an effective way to keep the environment clean. With the right control factors in place, fewer recyclable materials will find their way to our landfills. This means that future generations will be able to enjoy a cleaner, brighter South Africa.

ANNUAL GENERAL MEETING

The Annual General Meeting will be held on Thursday 18 November at 18h00. The meeting will be held at the Pierre van Ryneveld Community Church, 14 Baltimore Road, Pierre van Ryneveld.

You are encouraged to attend the meeting, where you can obtain first-hand information regarding the management of the Irene Farm Villages Estate, as well as have the opportunity to meet the Board of the Irene Farm Villages Home Owners Association. These are the people who, behind the scenes, make the decisions for the benefit of the estate.

CHARITY BEGINS AT HOME

A big thank you to all the residents who donated items for the Khomani San Outreach 2021 project. Altogether, a big difference was made in the lives of the people.

Thank you also to all the residents who spoil the security staff with cold drinks or something to eat.

Liashna Pillay from the Sunrise Helpers Foundation – in the heart of the winter – blessed the Security Officers each with a blanket as well as a cup of soup.



Here is her story:

"I believe that anyone is capable of charitable acts but there's only a handful who are intentional in their charity work because they do it to make a difference. I've always wanted to run my own foundation so that I can fulfil my dream of establishing something bigger for those less fortunate. I am the founder of the Sunrise Helpers Foundation (SHF) alongside an incredible team of board members and volunteers. We have led various projects (soup drives, clothing drives, a Christmas drive, a book drive, a toy drive, a food drive, sanitary pad drives which then moved to a biodegradable approach).

The Sunrise Helpers Foundation have also collaborated with other organisations. Our two most recent projects included a mass winter blanket drive and providing relief funds, resources (baby food, nappies, groceries, toiletries) and prepaid electricity for those who were affected in KZN after the recent turmoil.

In 2020, I realised that I needed to bring a project home - starting with the phenomenal Security Officers who are always welcoming when entering the estate. This got me thinking and I stand

Each one of us has the opportunity to make a change in a person's life, even if it's by just greeting them with a big smile.



Liashna Pillay handing out blankets and soup to the Security Officers

by this, Irene Farm Villages Estate is tremendously lucky to have the Security Officers that we have. Every day, our Security Officers leave their families and risk their lives to protect us. Despite it being part of their job, I wanted to show my appreciation. This year, my mom played a big role in assisting me as she cooked chicken soup on different days and I delivered the soup with blankets from Sunrise Helpers Foundation's blanket drive. It has been a great privilege to say thank you to our guards.

In closing - no great things can be done, only small things with great love."



The Christmas Market will be held on Saturday 11 December 2021 from 15:00 - 19:00. An ad hoc committee will arrange the market.

The residents are cordially invited to support the Christmas Market and to enjoy the afternoon with fellow residents.

*Warm regards,
Estate Management*

Here's the runner – get ready for the high.

The new Cayenne Turbo GT. Shaped by performance.

When it comes to ultimate performance, the Cayenne Turbo GT reaches a whole new level. Thanks to the maximum configuration status of the twin-turbo V8 engine with 471 kW (640 hp), it has a burning desire to deploy its incredible power and enthusiastically accelerate into the next bend. Just like a true athlete. Together with specifically tuned suspension systems, the Cayenne Turbo GT sets the conditions to surpass itself again and again. Witness it at your nearest Porsche Centre or on www.porsche.com/cayenne



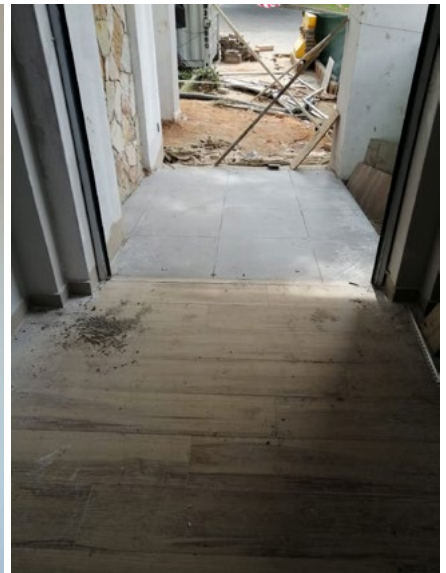
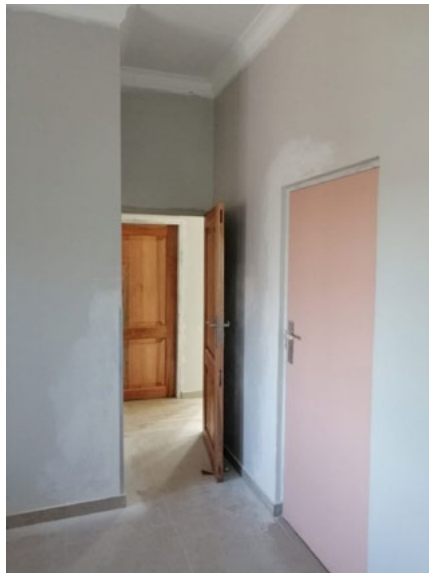
Porsche Centre Pretoria
452 Botterklapper Street,
Off Lynnwood Road, The Willows
Telephone 012 816 7600
www.porsche Pretoria.com

Combined fuel consumption: 11.9 l/100 km; Power: 471 kW (640 hp); Torque: 850 Nm; 0-100 km/h: 3.3 seconds; Top speed: 286 km/h
Priced from R3 350 000 including a 3 year/100,000 km Driveplan.



PORSCHE







IRENE FARM VILLAGES HOME OWNERS ASSOCIATION

Summary Income Statement – September 2021

September 2021 Year to Date YTD Variance
Actual Budget Actual Budget Value %

Operational Income						
Levy Income	1 250 128	1 207 154	8 596 024	8 450 078	145 946	1,7%
Other Income	31 501	24 411	405 743	294 827	110 916	37,6%
	1 281 629	1 231 565	9 001 768	8 744 905	256 863	2,9%
Operational Expenditure						
Professional /Administration	84 345	104 791	583 323	704 735	121 412	17,2%
Accounting and Auditing	36 105	41 237	352 203	356 091	3 888	1,1%
Insurance, Legal and Admin	48 239	63 554	231 120	348 644	117 524	33,7%
General Office	13 237	12 233	94 899	85 255	(9 644)	-11,3%
Office Administration	13 237	12 233	94 899	85 255	(9 644)	-11,3%
Operational Expenses	254 794	231 125	1 823 478	1 617 567	(205 911)	-12,7%
Municipal Charges	69 131	45 537	511 260	308 451	(202 809)	-65,8%
General Operations	17 463	23 593	127 805	165 151	37 346	22,6%
Salaries & Wages	168 201	161 995	1 184 413	1 143 965	(40 448)	-3,5%
Security	538 764	560 528	3 714 762	3 694 900	(19 862)	-0,5%
Security Operations	60 449	101 044	482 843	512 256	29 413	5,7%
Guarding Services	455 542	455 533	3 188 796	3 154 987	(33 809)	-1,1%
Insurance Claims and Excess	22 773	3 951	43 124	27 657	(15 467)	-55,9%
Repairs & Maintenance	186 205	197 501	1 334 573	1 327 044	(7 529)	-0,6%
Repairs & Maintenance	35 978	47 274	304 443	296 914	(7 529)	-2,5%
Park Maintenance Contract	150 227	150 227	1 030 130	1 030 130	(0)	0,0%
	1 077 345	1 106 178	7 551 035	7 429 501	(121 534)	-1,6%
Operating Profit / (Loss)	204 284	125 387	1 450 732	1 315 404		
Non-Recurring Revenue	5 028	0	48 073	0	48 073	100,0%
Non-Recurring Expenses	16 191	63 686	289 834	1 171 763	881 929	75,3%
Net Positive/ (Negative)	(11 163)	(63 686)	(241 761)	(1 171 763)	(833 857)	
Net Profit / (Loss)	193 121	61 701	1 208 971	143 641		

*"You don't
build a
business; you
build people
and then the
people build
your business"*
– Zig Ziglar

IRENE FARM VILLAGES HOME OWNERS ASSOCIATION

Summary Levy Statements – September 2021

	120+ Days	90 Days	60 Days	30 Days	Current	Total		Previous Month
Normal - Self Pay	-	-	-	36	- 447 407	- 447 371		- 455 425
Normal - Debit Order	-	-	-	-	- 10 321	- 10 321		- 28 893
	-	-	-	36	- 457 729	- 457 693		- 484 318
Debt Collection - AA (30/60 days)	24 379	7 102	16 710	54 899	63 116	166 206		145 211
Debt Collection - JJR (90+ days)	259 526	12 557	13 679	13 779	11 254	310 796		299 041
Debt Collection - KSB (90+ days)	34 129	7 896	7 921	7 990	7 466	65 401		67 411
Sold - Previous Owner Accounts	-	-	-	-	- 34 760	- 34 760		- 29 929
In Transfer	19 392	4 742	4 808	4 850	- 8 857	24 935		5 851
Other	1 145	2 638	2 661	2 696	503	9 643		6 423
	338 570	34 935	45 780	84 251	- 419 007	84 529	772%	9 690
Debt Collection - Acc > R200,000	1 097 638	18 937	19 061	11 538	8 482	1 155 657	0,7%	1 147 819
	1 436 208	53 873	64 841	95 789	- 410 525	1 240 186	7,1%	1 157 509

We want to thank all members who continue to pay their monthly levies so diligently. The total outstanding increased by R 82 677. 36% of the increase in the outstanding levies relate to the new stands registering, and the owners are still to make payment. The number of accounts owing more than three months remained at 19; with 60 days remaining at 26; while 30 days increased slightly from 38 to 43 accounts. Account Ability and the Estate Management are continuously driving collections to ensure adequate cash flow to fulfil the HOA obligations.

Irene Farm Villages Home Owners Association – Capital/ Development Projects

	Current stage	Approved Budget	Spent Prior Years	Spent This Year to Prior Month	Spent September 2021	Total Spent to Date	Available Budget
Upgrading of Gatehouses:							
South Gate	In Progress	4 600 000	99 902	1 693 197	1 023 609	2 816 708	1 783 292
North Gate	Completed	2 200 000	292 769	1 806 178		2 098 947	101 053
Office Relocation	In Progress	1 350 000	9 289	696 328		705 617	644 383
Professional Fees	In Progress	700 000	271 313	318 919	38 986	629 218	70 782
		8 850 000	673 273	4 514 622	1 062 595	6 250 490	2 599 510
Contingency/Variation		400 000	-		-		400 000
Total		9 250 000	673 273	4 514 622	1 062 595	6 250 490	2 999 510

Account Ability

Office Address:
Sovereign Drive,
Route 21
Corporate Park

Accounting
Office Hours
8:00 to 13:00
Monday to Friday

Office Tel: 082 780 0059

Accounts Email:
accounts@aams.co.za

IFV Accounts:
Winnie Boshoff

Summary Income
Statement by
Account Ability



THE ELIXIR OF YOU

SKIN RENEWAL

Waterfall

Courtyard Hotel, 13 Karkloof Crescent, Jukskei View Ext 124, Waterfall City, Midrand

cell 076 826 9137

tel 010 448 0046

skinrenewal.co.za

SKIN**renewal**

NEW

Join MTN. 4GB for R49. Be a Bozza.

(2GB Anytime Data + 2GB Night Express)

(Valid for 14 days)

To get great deals, simply:

- 1 Buy any MTN Starter Pack
- 2 Dial *136#, RICA and activate your new SIM
- 3 Dial *137# to register
- 4 Follow the steps on screen to join MTN BozzaGigs LTE



To qualify for MTN BozzaGigs LTE offers, register within the first 30 days of activating your SIM.



It's go time everywhere you go



Call 083 123 3667

Click mtn.co.za

Visit MTN stores



MTN Terms and Conditions apply. *Based on uMlout Best in Test Certification Feb 2020. MTN BozzaGigs LTE: Available from 20/04/2020 until discontinued by MTN. The offer is available to all new MTN prepaid customers who migrate to the MTN BozzaGigs LTE price plan within 30 days of a new SIM activation. Customers can migrate to MTN BozzaGigs LTE price plan by dialling *137#. Once migrated, they will be able to purchase the following exclusive data offers: 10GB (5GB Anytime Data and 5GB Night Express) for R99 and valid for 30 days, 15GB (7.5GB Anytime Data and 7.5GB Night Express) for R129 and valid for 30 days, 20GB (10GB Anytime Data and 10GB Night Express) for R149 and valid for 30 days. The MTN BozzaGigs LTE data bundles can be used on mobile or (and) mobile broadband devices. Customers on the MTN BozzaGigs LTE price plan will be charged R1.99 for out-of-bundle voice calls and R0.50 per SMS. Night Express: NightExpress data value may be used between 00:01 and 04:59 only. See mtn.co.za for full Terms and Conditions. E&OE.

Memories are made outdoors

We can bet some of your best memories were made outdoors! It's that time of year when lounging and dining moves outdoors. With Leroy Merlin, create an outdoor area that provides a beautiful backdrop and sanctuary for a party, a quiet cup of coffee, or your outdoor office.

Beats & Braai

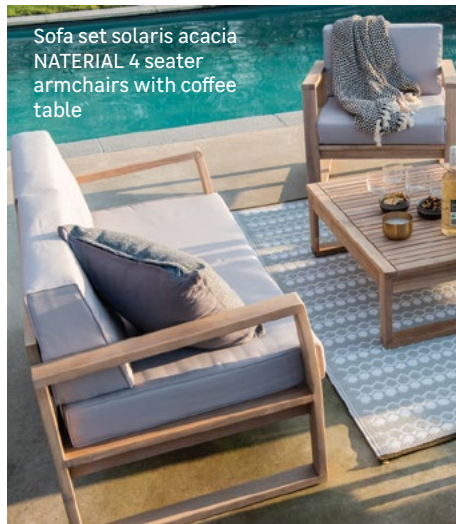
Pour a round of drinks and turn up the music for the season's best backyard braai. Music always sets the tone, so choose from a large range of wireless, portable bluetooth speakers, bluetooth lantern speakers, or smart home devices then follow the Leroy Merlin playlist on Spotify to set the perfect vibe!



Speaker lantern ovo
wooden handle

Depending on the size of your space or budget, there's a braai for you. Whether you prefer charcoal, gas, kettle, weber or smoke braais we have them all in stock. We also offer the covers and gadgets to go with them.

Like the digital thermometer for perfectly cooked meat, a tool holder, grill brush and grill light, grill mats and grill pans.



Style and comfort

Choose from our 2 to 6 seater sofa sets with matching tables, in steel, wicker, and bamboo, and with dark or light finishes. No poolside deck or patio is complete without sun loungers to laze on in the hot South African sun. Add cosy accessories, scatter cushions and throws for a pop of colour and a beautiful wicker basket to store your swimming towels. Throw some ice and drinks in a shiny new wheelbarrow and finish off the table setting with a fresh or artificial potted plant and a few candles.

The party must go on

Bright or neutral umbrellas will shade you for the day and fairy lights will bring the ambience at night. Light up your pathways, edges or driveways with solar garden spikes.

Pretty private

Whether you need an accent piece or privacy for your outdoor sanctuary, you have options... train your plants up a trellis or use the mock ivy expandable trellis to add cover and greenery. Wood screens are also durable and come in various wood shades and designs. Create a vertical garden with a wall planter made from eco responsible wood.



Stay grounded

Add gravel, grass, decking, paving or artificial lawn, depending on your taste and needs. Visit your nearest Leroy Merlin store for inspiration and advice or shop online, because creating your outdoor sanctuary is a mix of clever and innovative tricks.



Find us on



GREENSTONE
Corner Blackrock Street
& Stoneridge Drive,
Greenstone Park Ext 2,
Edenvale

LITTLE FALLS
Corner Hendrik Potgieter
& Cascades Road,
Little Falls,
Roodepoort

BOKSBURG
Corner North Rand
& Trichardt Road,
Bartlett AH,
Boksburg

FOURWAYS
Corner Fourways
Boulevard &
Roos Street
Fourways



Make your home
the best place to live

shop online at www.leroymerlin.co.za

CONSTRUCTION

HARDWARE

KITCHEN

BATHROOM

HOME DECOR

GARDEN

OUTDOOR FURNITURE

by **LEROYMERLIN**

Capture the moment with these outdoor essentials



**SHOWROOMS
NOW OPEN**
IN FOURWAYS & GREENSTONE

GREENSTONE

Corner Blackrock Street
& Stoneridge Drive,
Greenstone Park Ext 2,
Edenvale

LITTLE FALLS

Corner Hendrik Potgieter
& Cascades Road,
Little Falls,
Roodepoort

BOKSBURG

Corner North Rand
& Trichardt Road,
Bartlett AH,
Boksburg

FOURWAYS

Corner Fourways
Boulevard &
Roos Street
Fourways

LEROYMERLIN

Make your home
the best place to live

CONSTRUCTION

HARDWARE

KITCHEN

BATHROOM

HOME DECOR

GARDEN

shop online at www.leroymerlin.co.za

Enter and stand a chance to

WIN

A STATE-OF-THE-ART BRAAI!

Why choose a cheap, imported braai made from inferior materials, when you can have something **LOCALLY MADE** by South Africans who know and understand the art of braaiing?

BREEDT BRAAIS offer excellent workmanship and quality. They custom make stainless steel braais and their grids and ash pans are made to any size and specification.

To stand a chance to win this magnificent custom-made braai that includes an A-frame potjie holder, simply answer this question:

**What are
Breedt Braais
made of?**

Please email your answer along with your full name, your cell number, and your estate and stand number, detailing 'Breedt Braai Competition' in the subject line, to: competitions@eiapublishing.co.za.



Terms and Conditions:

1. The winner will be notified by email.
2. Indemnity: The publishers, estates and any other associated parties are not responsible for any guarantees, warranties or logistics of delivery once the prize has been awarded.



BREEDT BRAAIS

WE MANUFACTURE BRAAI PRODUCTS TO HOMES &
BUSINESSES THROUGHOUT
SOUTH AFRICA



2 IN 1 Stainless
Steel Custom
made Braai

Double
Argentina
Braai

Custom
made Built
in Braais

Complete
stainless table
braai stand

We offer excellent workmanship and quality. Grids and Ash
pans are custom made to any size and specification.
Custom made stainless steel braais and bomas.

We also manufacture Branded Braais for companies who want
their logo on the braai for marketing purposes.

0723281062

www.breedtbraais.co.za



Solar
panels
available
from 10W



Solar
ceiling light
R650.00



The Lighting One Stop



Solar
flood light
from
R380.00



Solar fan
R1250.00



Solar
camping kit
R290.00



Solar
street light
from
R825.00

Contact us for all your solar needs.
FREE quotations & advise

012 993 1761

Email: TheLightingOneStop@gmail.com
www.EastonsSA.co.za

744 Piering Road, Elardus Park, Pretoria



THE NEW BMW 128ti
HAS ARRIVED.

Come view the new BMW 128ti and
feast your eyes on the epitome of sporty
performance. With athletic good looks
punctuated by red M Sport accents, a
striking interior and a powerful TwinPower
Turbo engine, the new BMW 128ti is a new
force to be reckoned with.

Contact us today on 012 683 4000 or
email info@bmwcenturion.co.za to book
a test drive.

BMW Centurion

2023 Lenchen Avenue
Centurion
Tel. 012 683 4000
www.bmw.co.za/centurion

THE SAGMJ CAR OF THE YEAR 2021 WINNERS

BY ALAN ROSENMEYER



The First-Place Overall Winner of the 2021 South African Car of the Year competition is the Peugeot 2008.

The South African Car of the Year (COTY) trophy, awarded since 1986, is the country's most highly respected and sought-after motoring accolade. While the competition has evolved over the years, (categories were introduced recently), one thing has remained true to the contest - it celebrates and rewards automotive excellence based on judging and voting by a jury who are members of the SA Guild of Mobility Journalists (SAGMJ).

This year was my first as a trainee juror on the panel and, although the traditional 2-day physical evaluation session could not take place, the online scoring system that has been developed over the last few years enabled the contest to go ahead. The scoring system was initially created to build up a database of vehicles tested, with their strengths and weaknesses - and then compare them to category contenders. Election is by a vote of peers and I deem it a

great honour to be part of the esteemed team.

Ongoing liaison with manufacturers and keeping up with worldwide trends has resulted in the constant updating of judging criteria and the creation of numerous categories as well as a public vote for the Motor Enthusiasts' Choice and the Jurors' Excellence Award.

The COTY scoring process is so much more than just juror scoring. Once our expert panel concluded scoring, the automated scoring factors that cover sales performance, segment share and value for money are applied. The automated scoring information was provided by Lightstone Auto, which provides data-driven insight, online market intelligence and new vehicle sales data to the South African automotive industry. The Jurors' Excellence Award uses raw scoring to reveal which vehicle received the highest scores before automated factors were included.

Click here to see the Peugeot SA Team's reaction to the win:
https://www.youtube.com/watch?v=FfsbWQX8o_8



First-Place Overall Winner
- Compact Family Category
and Jurors' Excellence
Award - The Peugeot
2008 SUV

Second-Place Overall
Winner - Double Cab
Category - The Toyota
Hilux Double Cab



Third-Place Overall Winner
- Premium Category
- BMW 4 Series

The 2021 South African Car of the Year Category winners are:

Budget Category:	Toyota Starlet
Compact Category:	Hyundai Venue
Compact Family Category:	Peugeot 2008 SUV
Family Category:	Audi A4
Premium Category:	BMW 4 Series
Adventure Category:	Toyota Land Cruiser Prado
Double Cab Category:	Toyota Hilux Double Cab
Performance Category:	Porsche 911 Turbo S
New Energy Category:	Porsche Taycan
Motor Enthusiasts' Choice:	Mercedes-Benz E-Class
Jurors' Excellence Award:	Peugeot 2008 SUV



The 2021 South African Car of the Year, Family Category, Audi A4



The 2021 South African Car of the Year, Budget Category, Toyota Starlet



The 2021 South African Car of the Year, Performance Category, Porsche 911 Turbo S



The 2021 South African Car of the Year, Compact Category, Hyundai Venue



The 2021 South African Car of the Year, New Energy Category, Porsche Taycan



The 2021 South African Car of the Year, Adventure Category, Toyota Land Cruiser Prado




The 2021 South African Car of the Year, Motor Enthusiasts' Choice, Mercedes-Benz E-Class

New!

Do what you love.

The new range of SILENO Robotic Lawnmowers are ideal for small to large size gardens and for achieving a beautiful lawn. Let's be honest, even keeping small lawns tidy can take a lot of effort.

- Totally autonomous
- Highly flexible
- Works in all weather conditions
- Easy to clean - Hose washable
- Built in set-up function 



SILENO minimo 250



SILENO minimo 500



SILENO city 300



SILENO life 750

 **GARDENA®**

gardenas.com



SUCCULENT SUMMER CUPCAKES

Tips for piping
scrumptious
confectionary
succulents



Every summer, all the succulents in our gardens, on our windowsills and in our planter boxes explode into life. Summer and all the life it brings should be celebrated and what better way than with a scrumptious cupcake adorned with captivating cacti that look ready to soak up the summertime sunshine?

While the intricate-looking cupcakes may look prickly to pipe, prodigy piper, Grace Stevens is here to share her top tips on how to get pinpoint perfect succulents to adorn your summer table spreads.

PERFECT ICING CONSISTENCY

The consistency of your buttercream is super important to get right or your culinary garden can quickly become a delicious but disappointing mess. If you have followed the instructions of your icing recipe but something still isn't quite right – there are a few steps you can take.

If your buttercream is too stiff, and you are struggling to extrude it from your

nozzle, mix a little milk or water into the buttercream until it is spreadable like peanut butter.

If the buttercream is too soft, and you find you have very little control over the extrusion speed – try giving it a rest for 30 minutes in the fridge. Sometimes, the heat of your hands can cause the butter in the icing to liquefy. Cooling it in the fridge helps the butter to re-solidify so you have better control over your form. If I'm piping lots of succulents on a short timeline, I'll always use more than one piping bag with the same nozzle and buttercream and alternate using each piping bag to prevent my buttercream from getting too warm.

It is also important to make sure your icing sugar does not contain an anti-caking agent or cornflour. This is because the viscosity and expansion properties of the cornflour – the way it reacts to pressure under your hand – make it almost impossible to get a proper stiff buttercream. It is far better to use pure icing sugar for better control.



SIMPLE TOOLS

The great part about succulents is that they only require simple tools to achieve the same impact as complicated sugarcraft. Once your icing assembly line is set up, you should not need fabric icing bags as these are usually used to insulate the icing from the heat of the hand in bigger scale kitchens. At home, you can use disposable bags that can be tossed when you are done – which makes cleaning up much easier.

To make sure that you properly control the speed and extrusion of your icing from your bag avoid overfilling it. Much like holding a pencil in the correct place gives you control over lettering, holding your bag in the palm of your hand gives you control over your creation. Personally, I find that 100g of icing per bag fits perfectly in my hand and gives me pinpoint control.

When it comes to the precision of your final product don't underestimate the importance of keeping your hands, tools and work surface clean and organised. Trust me, nothing is more disappointing than accidentally piping the wrong colour directly onto a cake or turning around to find half of your succulents hanging squished to your sleeve. Keeping your tools clean makes for clean work and immaculate results.

SELECTION OF SUCCULENTS

When deciding what type of succulent to pipe, remember to be patient with

yourself while you are learning. If you are a beginner, rather choose a succulent that requires one nozzle and one colour. If you are more advanced, you can experiment with realism – I often use a good reference picture or a real specimen to push my colour matching skills. Try to achieve the perfectly balanced green by experimenting with the tonal value and adding black or brown.

ARRANGEMENT AND TEXTURE

During a class, I had a very nervous student who had tagged along with a friend. Once she piped her first succulent, her reservation melted quicker than buttercream in an African summer and she left beaming enthusiastically about the bouquet of succulents adorning her cupcake.

To get the most out of your succulent arrangement use succulents that vary in texture to create dimension. If you are more advanced and want to add flowers, make selections that won't compete with the textures in the succulents so that the eye can easily follow the design of your cupcake.

TRANSPORTING YOUR CREATION

Succulents are a perfect place for beginners because they are easy to transport to show off to friends and family. Unlike the more complicated designs of traditional flowers, they can easily be piped directly onto the cake or piped well in advance and refrigerated

or frozen until you need them. If you are transporting them, it's best to do so in a covered cardboard box as they will crust over if left out at room temperature, not to mention it makes them far less fiddly to handle.

We have long adored the geometric curls, glorious textures and extraordinary colours of succulents. Knowing the simple piping techniques behind making them takes them from being an indulgence we dream of right to our tables. This modern, arid aesthetic is hot in the icing and gardening worlds, turning regular cupcakes into the perfect prickly treat for your next picnic.

For more summer secrets, follow Grace on Instagram @grace_stevenschef, or visit her website at www.gracestevens.co.za.

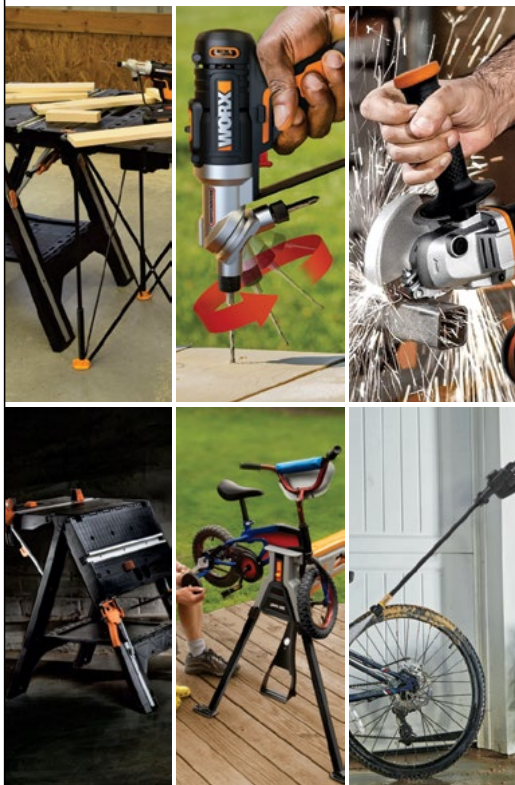


WORX

you've got the power

worxtools.co.za

Share batteries,
Save money



20V MAX **POWER SHARE**

The more you buy, the more you save! Expand your cordless system without paying for unneeded batteries and chargers. The WORX 20 V MAX Lithium platform provides a comprehensive product range to cover all your DIY and garden needs.

WEDGIT

A FITTING GARDEN COMPANION

The Wedgit Adjustable Soft Spray is ideal for gentle watering. The water flow rate is fully adjustable, accommodating both light watering of sensitive plants, and increased watering where needed. It is manufactured from top quality materials (e.g. zinc alloy), and offers a comfortable soft touch grip.

New

Adjustable soft spray

2x
Tougher
garden hose
connection

17bar
Leak-free
Made from
Engineering-
grade
polymers

3
Seconds
to connect
Patented
Coupling
Action

Strong
enough to
tow a car

Backwards
Compatible

Easy
to use
Ages 3+



For more info and distribution enquiries, Call **Vermont Sales** on (011) 314 7711 or go to www.vermontsales.co.za



A LETTER TO HIGH SCHOOL STUDENTS

BY MICHELLE L. RAYMOND

Why do adults ask kids what they want to do when they grow up? To get ideas!

What you choose in terms of your school subjects, the university or college you will attend, and your career will not define the rest of your life. And if you think it does, then perhaps you need some guidance because who you are as a person, how you choose to respond to situations in life, and how you treat others is far more important than any job title or profession.

I can count on one hand the number of people I know that after school knew what they wanted to do and are still doing it – and are happy.

Instead of stressing about having a 10-year plan, or having no plan, shift your thinking towards something that can serve you better now and in the future.

Here are four things to consider as you move into the next season of your life.

KNOW THYSELF

The pressure and requirements for choosing a career path during your high school years are enormous and – quite frankly – absurd. Unless you have been mentored and groomed for the road ahead, choices are often made from limited exposure to the world and only partial knowledge – knowledge of self, that is. Do you (as a 16 or 18-year-old) know who you are, or where your strengths lie and how to use them to your advantage? Do you know your areas of development and your gifts? Are you aware of the opportunities that lay before you?

Many adults are unaware of these things, yet, some are running companies whose staff are at the mercy of their blind spots.

Self-awareness is the secret ingredient to knowing what your purpose is.

LEADERSHIP

Leadership is a big theme in school, particularly as you draw closer to Matric and titles become prioritised: Head Boy, Head Girl, Prefect, Student Representative Council, etc.

There is so much information about what leadership is, and yet it is still misunderstood. To understand what leadership actually is, it is sometimes necessary to first know what it is not.

- Becoming a leader is not a popularity contest.
- Leaders are not in charge of others – those are managers. You can be a manager without leadership skills and be a leader without being a manager.
- Leaders are not appointed.
- Leaders do not control others.
- Leadership is a learnt skill. Some people are natural leaders, where

others develop the skill.

- Leadership is not a title.

The best definition of leadership is: the responsibility you take for the influence you have on the world around you.

THE HIGH ACHIEVERS

School is an academic institution based on the principles of education, learning and knowledge. To measure progress, it needs quantitative results, i.e. tests and exams. Therefore, performance at school is based upon marks and academic achievements.

Even though school takes the majority of your time, you are still more than your marks. Unless you plan on becoming an academic and spending the rest of your days reading, researching and

publishing papers, there is a lot more to life than just developing your intellect.

There is an unhealthy and unbalanced focus on this element of people development. Even if you are a high achiever and school comes easy to you, you risk becoming identified with smartness and success. In other words, you base your self-worth on your performance and output, which leads to burnout, stress and lack of meaning in life.

LIFE IS A JOURNEY

My work offers me a unique opportunity to engage with people on a very deep level. Many of these people include top business leaders, successful entrepreneurs, doctors and CEOs. Those leading the most exciting and influential lives have realised that there is no final destination, finish line at the end of the rat race, or beacon at the top of the ladder where they get awarded for

COACHING AND GUIDANCE
FOR INDIVIDUALS, YOUNG
ADULTS AND FAMILIES.

SINCE 2013



MICHELLE L. RAYMOND
— WELL-BEING • COACHING —

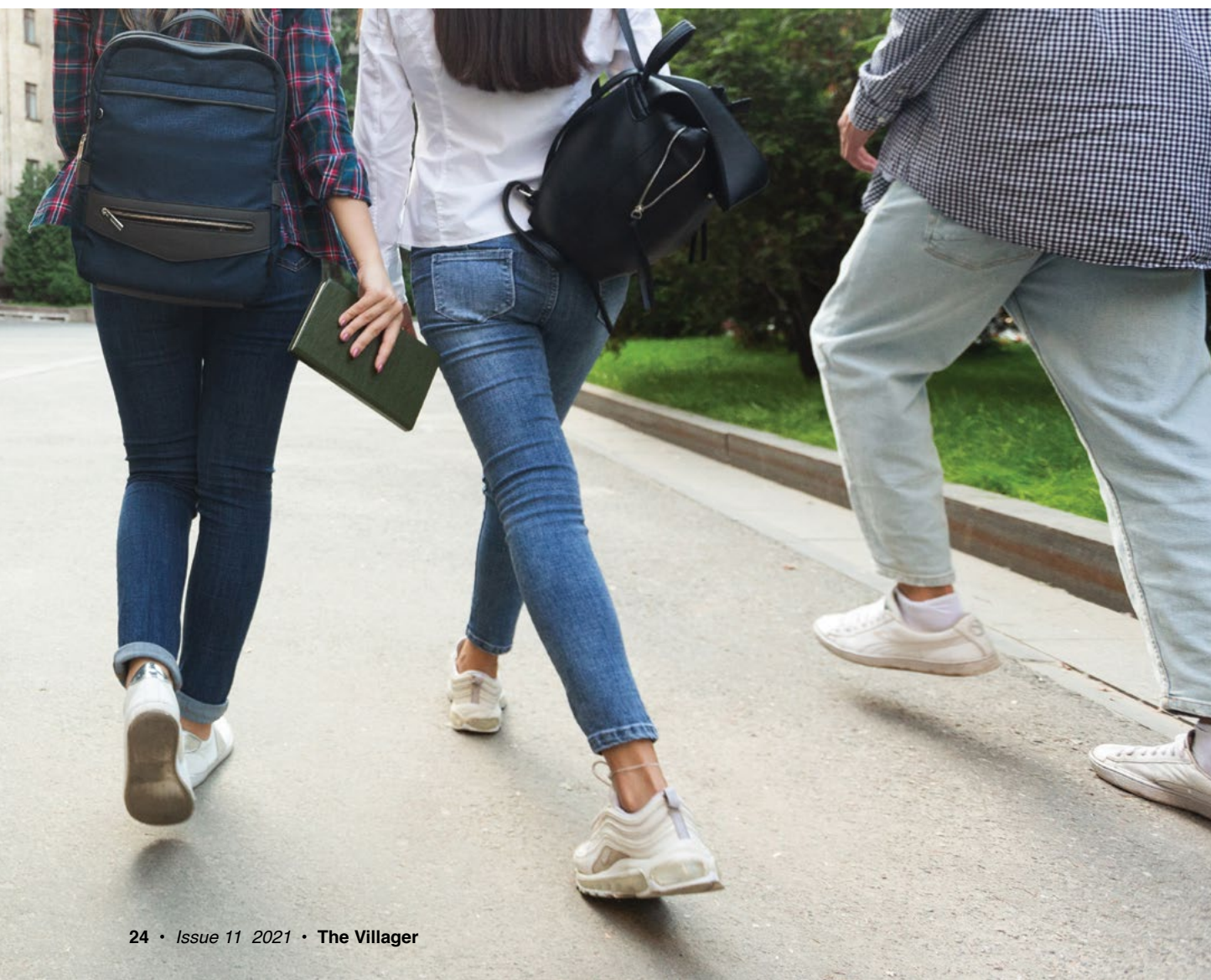
073 170 6780

WWW.MICHELLELRAYMOND.COM
MICHELLERAYMONDSA@GMAIL.COM

MichelleLRaymondofficial/
shell_raymond/
Michelle L. Raymond

ultimate achievement. Their success and motivation come from their ability to embrace the journey and whatever it brings.

You do not have to have yourself, your career and your life all figured out. Just take it a step at a time.





**Fast,
professional
and reliable
services**

- Installation with COC certificate
- Delivery:
Monday - Friday
8.00am - 17.00pm
- Collection:
24 hours at EPG shop



**An Authorised
Gas Distributer**

012 324 3294
or WhatsApp: 071 672 2914
www.epggas.co.za

450 Es'kia Mphahlele Dr & Bloed Str, Pretoria West, Pretoria




**Love
the
Drive**



supaquick.com

SUPA QUICK IRENE
Cnr Main & Hack Rd,
Irene
012 667 1983
irene@supaquick.co.za

BRIDGESTONE

supa quick
more than tyre experts



WAXIT

IT'S THE SEASON OF SMOOTH

Welcome to WAXIT - a wax bar dedicated solely to smooth skin. It's a refuge of removal, a haven of hairlessness, a sanctuary of smooth.

A place where men, women and teens alike can go to wax it expertly and discreetly, free from the intrusions that come with visiting full service salons.

And because we're masters of sleek and silky, we focus only on fuzz. No manicures, pedicures or facials, just high quality waxing. When it comes to our craft, only the best will do, which is why our master WAXITologists use only the best imported waxes.

We follow strict COVID protocols in store.

The Freedom of Smooth

Book your appointment **076 746 0316** or **010 443 9704**

WAXIT SOUTHDOWNS

Southdowns Shopping Centre, Corner John Vorster and Karee, Southdowns, Centurion
Near Pick 'n Pay entrance | southdowns@waxit.co.za



@waxitsa



@waxitsa



@waxitsa

SERVICES

Car wash: The Village Boys Mobile Car Wash
– Call 083 527 5033 or 081 241 5089, or email: thevillageboys.carwash@gmail.com.

Need someone to look after your dogs while you're away? Our service includes feeding, walking and loads of love, cuddling and playing. WhatsApp Nico on 082 799 5887 or Willem on 082 799 5884.

Pet sitting: Make it easy for yourself when going away. I care for your pets in the comfort of your home. Call me: Mieke on 071 016 0913 / 082 448 5844 (www.MyPetCare.co.za).

FOR HIRE

Jumping castles, tables and chairs, gazebos, kiddies' tables and chairs for hire @ 42 Country Club Avenue, IFV. Contact Werda on 082 822 8659 or visit www.creativecastles.co.za.

DOMESTIC WORKERS

Leah is available to do additional domestic work on Tuesdays and Thursdays in the estate. She has been working for more than ten (10) years for the same employer. If you are interested, contact Archie (current employer) on 082 628 0874, or Leah directly on 072 064 2121.

Lettie is looking for more work in the estate. She has been working for me for the past 2 months and is very hard working, reliable and friendly. Her work is amazing. Lettie is available on Mondays,

Wednesdays and Fridays. Please contact Lettie on 079 392 5088, or call 083 399 3239 for a reference.

If you are looking for a domestic worker, **Josephine** has Fridays available. She has been working for me for many years. She is fully vaccinated, reliable, honest and an excellent domestic worker. Kindly contact her on 079 515 3976.

Stephanie is looking for domestic work on Tuesdays, Wednesdays and Fridays, from 1 November. She's been working for me for 10 years and is very hardworking, reliable and trustworthy. Please contact me directly for a reference on 083 644 1133.

Blessing has worked in our estate several times and is a keen and pleasant worker. She is already working for a family in our estate once a week, every Friday. She is looking for more work, either temporary or permanent, to fill up her days. Kindly contact her on 081 447 4954. You are also welcome to call Vangi on 072 731 0172.

SERVICE PROVIDERS

LITTLE EINSTEIN'S PLAYSCHOOL

An exceptional Pre-school with highly qualified teachers who believe that: *'Play is the highest form of education'*: A.Einstein and *'Educating the mind without educating the heart is no education at all'*: Aristotle. Contact: Sharon Rosema 082 904 8157 or follow them Facebook.

KJL Wood & Alu: Wooden doors, window frames and decking. Maintenance and restoration as well as new installations: Doors, window frames, pergolas, decks (wood and composite decking). General installations and custom joinery. Please contact Kobus Langeveldt on 074 615 8579 or kobuslange@yahoo.com.



ALTOKLEEN (1979): Supervised quality cleaning of carpets, loose rugs, upholstery, leather, windows, and spring cleaning. We also do pest control. Pretoria, Centurion, Midrand. Open Mondays – Saturdays. Call 072 349 8787 or 082 395 6449, or email: Info@altokleen.co.za.

INDGRO Window Cleaning Services: We supply a highly-effective window cleaning service using purified water (providing you with the perfect "GREEN" solution) through a water-fed pole system which is up to 70% quicker than traditional window cleaning methods – residential homes, office blocks, showrooms, factories, apartment complexes and anywhere else where you have windows (up to 5 storeys high with no ladders or scaffolding). Contact Nicole at Indgro on 011 380 7500, 061 294 0707 or email info@indgro.com.

Haute Care: Advanced Wound Clinic Home Based Caregiving Maraki Beauty by Haute & Aesthetics Tel: 012 023 0487



**BEAT LOAD SHEDDING! SAVE ON YOUR BILL!
PROFIT FROM YOUR FEED-IN TARIFF!**

**TURN YOUR BUSINESS OR HOME
INTO A SOLAR POWERHOUSE!**

- FREE CONSUMPTION MEASUREMENT • FREE QUOTATION • CERTIFIED ELECTRICIANS
- PR ENG SIGN-OFF • GRID APPLICATION READY • NEDBANK PREFERRED INSTALLER
- FULL LIFETIME FINANCIAL ANALYSIS • BUILDING INSURANCE APPROVED

NO GUESSWORK, WE MEASURE! WE REPAIR BOTCH JOBS



PVGreenCard
ACCREDITED



info@1greenplanet.net | www.1greenplanet.net | 0861 GREEN 1
Chris (Sales): 082 825 4637 | Louis (Technical): 082 904 1185

Contact us for your **FREE** electricity consumption measurement and quotation



**PLEASE SUPPORT
OUR APPROVED
ESTATE AGENTS**

apple
PROPERTY
CONNECTION

Your
Real
Estate
Agent

Melanie Burrell
082 653 5568
melanie@appleproperty.co.za
www.appleproperty.co.za

Quality
Service
Reliability

BuySell
THE REAL ESTATE COLLECTION

Principal: Nina Antoniou
Agent: Nina Antoniou Cell: 082 963 1994
Rental Agent: Eunice Cell: 071 676 5940
Office: 012 667 3692
Fax: 086 617 0516

LÉANE GRAAFF
PROPERTIES
PROPERTY PRINCIPAL

083 457 3184
r.graaff@absamail.co.za
let me lead you home!

leapfrog
PROPERTY GROUP

Steven Kruger
082 699 4881
steven.kruger@leapfrog.co.za

MIDTEAM
Real Estate
Yesterday - Today - Tomorrow

012 940 9595
Jacqueline Human
jacqueline@midteam.co.za
082 901 4788
Stephnie van der Walt
stephnie@midteam.co.za
066 200 1307

17 YEARS OF
EXCELLENCE

PAM GOLDING
PROPERTIES

Principal: Retha Schutte
Office: 012 644 8300
Agent: Peter Varrie
Cell: 082 457 7416
peter.varrie@pamgolding.co.za

RealNet
Ultimate properties
Independently owned and operated franchise

Marius Minnie
083 640 2222
mariusm@realnet.co.za
www.realnet-ultimate.co.za
www.realnet.co.za

RM REALTORS
SALES RENTALS COMMERCIAL DEVELOPMENT

Machelle Henning-Walker
OWNER / PRINCIPAL
Cell: 082 789 7888
machelle@rmrealtors.co.za
www.rmrealtors.co.za

Seeff
Expertise Built Through Generations of Trust

Principal: S.J. van Wyk • 082 454 9813
Elaine Haupt • elaine.haupt@seeff.com • 083 757 6377
Michelle Nieuwoudt • michelle.nieuwoudt@seeff.com
• 083 757 6377
Office: 012 667 2167 • Fax: 012 667 3566 • www.Seeff.com

SUPERIOR REALTY
REALTY

Jonathan Koen
Cell: 073 206 3877
www.superiorrealty.co.za
jonathan@superiorrealty.co.za

Dr. Marcel C. Niemandt
MBChB (Fret), FCOphth (SA)
OPTALMOLOG / OPHTHALMOLOGIST

Annual appointments with your ophthalmologist can help with an early diagnosis and treatment of eye diseases which may result in long term vision loss.

For any enquiries and to make an appointment, contact us today

T: 012-809-6027 / C:078-456-1943
E: info@drmcniemandt.co.za
W: www.drmcniemandt.co.za
Unit 9, Intercare Hazeldean, Silver Lakes

DENTAL
BOUTIQUE

SPECIALIZED DENTISTRY
FAMILY DENTISTRY
ORTHODONTICS

Centurion Gate Centre
012 6633 590
info@centuriondentist.co.za
www.dentalboutique.co.za

IMPORTANT NUMBERS

Police Emergency	10111
Lyttelton Police Station	012 644 8600
Pierre van Ryneveld Community Policing Forum	079 528 1630
Fire Emergency	10177
Medical Emergency	082 911
Security at Gates	012 662 3505 ext 3
Protea Coin Shift Manager	082 838 7779
Irene Farm Controller	082 947 7610
Irene Farm Villages:	
Estate Office	012 662 3505
Estate Manager	079 525 9281
Assistant Estate Manager	083 367 5052
Managing Agent: Account Ability	
• Tel: 082 780 0059 • Fax: 086 671 9798 • info@aams.co.za	



IMAGE:ISTOCK

PERFORMANCE-ENHANCING DRUGS

BY JAMES CLARKE

I have it from a very unreliable source that Pfizer, buoyed by the huge success of Viagra, is now researching a whole line of drugs aimed at improving the performance of men in other ways.

Here are some of them:

BUYAGRA – Married and otherwise attached men reported they experienced a sudden urge to buy their partners flowers and little gifts after taking this drug for only two days.

PROJECTRA – Men given this experimental new drug were far more likely to actually finish a household repair project before starting a new one.

DIRECTRA – A dose of this drug given to men before leaving on car trips caused 72% of them to stop and ask for directions when they got lost compared with a control group where only 0.2% asked for directions.

CHILDAGRA – Men taking this drug reported a sudden, overwhelming urge to perform more child care tasks, especially cleaning up spills and changing nappies.

COMPLIMENTRA – In clinical trials, 82% of middle-aged men administered this drug noticed that their wives had a new hairstyle. It's currently being tested to see if its effects extend to noticing new clothing.

NEGA-SPORTAGRA – This drug had

the strange effect of making men want to turn off televised sports and actually chat with the family.

CAPAGRA – Caused test subjects to become uncharacteristically fastidious about lowering toilet seats and replacing toothpaste caps. Subjects on higher doses were seen dusting furniture.

For adults only

The following is for grown-ups only. Everybody under the age of 50 can go outside and play until I call you in again. (You'll never believe this stuff anyway.)

Things overheard in 1961:

"I'll tell you one thing, if things keep going the way they are, it's soon going to be impossible to buy a week's groceries for R15."

"They want to call Johannesburg's southwestern townships 'Verwoerdburg'. Others say that, as the area is known as Southwestern Township, it should be called Soweto. That'll never catch on, surely?"

"Do you think the police will ever catch this fellow, Nelson Mandela?"

"What's all this about the Russians walling off Berlin?"

"I shouldn't have bought this Mercedes – it cost almost R3 to fill it up this morning."

"Twenty-five cents a packet? One more price rise and I'm giving up smoking!"

"I don't believe that the bioscope does kids any good. You hear film stars openly say 'bloody' and 'damn'. Kids are bound to follow suit."

"Guess what? Amanda's got one of those electric typewriters! Seriously! And she's getting almost R100 a month."

"Gordon Forbes says Wimbledon tennis players should get at least R500 for playing in the finals."

"Have you seen the new Chevy station wagon? R1 200! Who's going to pay that for heaven's sake?"

"We went to a restaurant last night – they wanted R2.50 for 12 queen prawns! We ordered barracuda instead at R1.50. Our favourite wine's now 25c a bottle!"

"Do you know there are 100 computers in South Africa? By next year there'll be another 20! And somebody predicts that NCR's R1 million room-sized computer will be down to pocket-size one day and sell for R10. Ha!"

"Do you like it? I paid R3.50 for the blouse and R7.95 for the skirt at Foschini."

"Our favourite Cape coast hotel now wants R30 a week for the two of us. We've cancelled, of course."

(OK kids, you can come inside now.)



my EC at home

PASTORS BERT AND CHARNÉ PRETORIUS

JOIN US FOR
CHURCH ONLINE
EVERY SUNDAY

CONNECT HERE



10am



6pm





8am | 10am | 6pm

BG | B I R T H M A R K
G R O U P

info@birthmarkgroup.co.za
072 807 6705

Financing Available
Apply Now!

Architectural Service:

House Plans

– Municipal Submission & Approval



Building Construction & Renovation Services:

- New Houses or Extension
- Swimming pool construction
- Pavements
- Painting
- Tiling
- Plumbing
- Electrical (COC)
- Built-in Kitchen units
- Kitchens & Bathroom renovation
- Solar Geysers Supply and installation

NATIONAL HOME BUILDERS
NHBC
REGISTRATION COUNCIL

TLB & Tipper Truck hire:

– Daily, Monthly and
Long term Contract



Supply and Deliver

- River Sand
- Building Sand
- Crusher Sand
- Plastering Sand
- Concrete mix

Exclusive offer to Irene Farm Village Estate



From basic back-up power to full off grid solar solutions

Contact us for a *FREE* site evaluation and to capture your electricity usage with our smart data loggers. This will allow us to supply you with an accurate estimation of your solar solution needs, and furnish you with an obligation free quote.

With almost 20 years' experience, we can provide expert advice to assist our customers in achieving long-life performance of solutions while optimising energy delivery of products on a daily basis.

**LET US
DETERMINE
YOUR POWER
NEED FOR
FREE!**



CONTACT US TODAY

+27 12 348 9893

menlyn.rentech@xce.co.za

www.rentechmenlyn.co.za

