



**WATERFALL  
CITY**

**ISSUE 4 | 2025**



# **WATERFALL CITY TOURNAMENT OF CHAMPIONS 2025**

Rewarding our  
top estate agents

Swap screen time  
for green time with  
our nature walks

Estates crack  
down on speeding



Clearly the best way to view your world.



SF20 frameless patio enclosure system

Tel: 010 143 7655  
[www.sunflex.co.za](http://www.sunflex.co.za)

**SUNFLEX** 

# Contents

## NEWS

- 2** Welcome
- 4** Clash of the Golfing Greats
- 6** Recognising excellence at the WCMC Prestige Property Awards
- 9** Waterfall Country Estate cracks down on speeding
- 17** A premiere to remember: Waterfall City Cares rolls out the red carpet for senior residents
- 18** Mall of Africa's new vibrant brand campaign
- 41** Waterfall City Contacts

## SUSTAINABILITY

- 12** Trading screen time for green time

## LIFESTYLE

- 23** New in the Hood
- 25** Must Do
- 34** Livingstones Garden & Home: A Legacy of Excellence
- 44** Restaurant Competition for Waterfall City Residents

## HEALTH

- 28** Netcare: Lifesaving heart op

## FINANCE

- 30** PSG Wealth: How to make it last beyond three generations

## HOME FRONT

- 36** Latest Décor Trends: Lighting and Glass
- 40** Waterfall City Home Service Providers and Classifieds
- 42** Waterfall City Resale Agent Panel

The Waterfall City Magazine is published by Estates in Africa (Pty) Ltd trading as EIA Publishing on behalf of Waterfall City and in association with Waterfall City Management Company. The opinions expressed are not necessarily those of the Waterfall City Management Company, Waterfall City, the publisher, nor of the companies themselves.


ESTATES IN AFRICA (PTY) LTD HEAD OFFICE: 32 Fricker Road, Illovo, Johannesburg. [www.eiapublishing.co.za](http://www.eiapublishing.co.za)

Publisher: Nico Maritz, [nicom@nowmedia.co.za](mailto:nicom@nowmedia.co.za)  
Editor: Nicole Hermanson, [nicole@eiapublishing.co.za](mailto:nicole@eiapublishing.co.za)  
Marketing Manager: Martin Fourie 072 835 8405, [martin@eiapublishing.co.za](mailto:martin@eiapublishing.co.za)  
Production Co-ordination: Chris Grant, [chrsg@eiapublishing.co.za](mailto:chrsg@eiapublishing.co.za)  
Design: Diane van Noort, [d2vn@mweb.co.za](mailto:d2vn@mweb.co.za)







# Welcome!



**A**s you probably noticed from our cover, golf is the big story of the month. We're delighted to be welcoming back the Waterfall City Tournament of Champions supported by Waterfall City Management Company (WCMC) and Attacq, bringing top names and up-and-coming stars in golf to Johannesburg in May. This high-octane showdown will see South Africa's finest compete for a first prize of R1 million. Players from the South African Disabled Golf Association will also participate in the event and the Spectator's Village promises activities for the whole family including a kids' zone and live music.



Residents recently enjoyed a guided nature walk to celebrate World Wetlands Day. The walk around Country Village Estate was led by guides from Kloofendal Nature Reserve and WCMC, and included tips on how to eradicate invasive plant species.



The world-class urban design of Waterfall City and the enviable lifestyle often see us winning international awards. Now we've turned it around by staging some awards of our own. WCMC has launched the inaugural *Prestige Property Awards* to recognise outstanding contributions by real estate agents operating here. The agents introduce new residents, foster community engagement, and drive

property sales that contribute to the success of our estates. Read on to discover the winners!

A premier of a different type was enjoyed by residents from our two mature lifestyle estates, with a complimentary screening of the new Jessica Lange movie, *The Great Lillian Hall*. If you are too young to have been invited, you can catch it at Ster-Kinekor in Mall of Africa. It's a must-see!


Talking about Mall of Africa, they have recently launched a vibrant new brand campaign, and we share all the details, inside. Plus, be sure to check out our New in the Hood page about Mica, as well as our Must Do pages to keep up to date with all that is happening in our City. Another useful read highlights Livingstones Garden & Home in Woodmead, a store offering gardening and home equipment, along with expert advice.

Out on the roads, the steady growth of traffic in our various estates is causing a rising problem of speeding, putting pedestrians, cyclists and our wildlife at risk. Please read our article about the introduction of speeding fines, and let's respect the rules of the road together.

Saving lives is also the theme of our Netcare column about baby Oaheng Twala and her heart condition. A near fatal incident led to the discovery of a heart murmur and surgery. Spoiler alert – the outcome was positive!

Finally, our PSG Wealth advice looks at how to avoid the disaster of family wealth being blown by younger generations. If you're planning a *Great Wealth Transfer*, this one is for you.

Until next time, enjoy the read!  
Waterfall City Management



**PREFER A DIGITAL COPY?** If you are a Waterfall City resident currently receiving a printed copy of this magazine but would prefer to instead download it electronically from the Community Portal or Waterfall City website, please email [customercare@waterfallcity.co.za](mailto:customercare@waterfallcity.co.za) with your name and full address, including your estate name and stand number or building name/block number and apartment number, so we can update the distribution list accordingly.





**LAST SUMMER SALE !**

\*Terms & Conditions Apply

**3 Bed 2 Bath**

**Was R2 049 900.00 / Now R1 844 910.00**





Willie Vos – CEO Waterfall City Management Company; Nobuhle Dlamini; Rupert Kaminski; Yurav Premilall; Casandra Alexander; Michael Clampett – Asset & Property Management Executive Attacq, at the event launch on 10 March 2025 at Waterfall Country Village Estate.

# CLASH OF THE GOLFING GREATS

**T**he Waterfall City Tournament of Champions supported by Attacq and Waterfall City Management Company (WCMC) is back.

Part of the Sunshine Tour's 2025/2026 season, this tournament will showcase winners throughout South African golf at Royal Johannesburg's famed East Course from 22-25 May 2025.

This isn't just golf; it's a high-octane showdown where South Africa's finest – pros, amateurs, men, women, and the leading athletes within the South African Disabled Golf Association (SADGA) – play for glory.



**WATERFALL CITY**  
TOURNAMENT OF CHAMPIONS

The professionals, drawn from the Sunshine Tour and Sunshine Ladies Tour, will again compete for a first prize of R1 million. Last year, Louis Albertse and Waterfall City's brand ambassador, Casandra Alexander, delivered a nail-biting spectacle

as they vied for the top spot, with Albertse winning in the end. "It was a great event. I enjoyed the golf course and the challenge, and to come out as the winner was special," said Albertse, who took home the first-place prize money. "The tournament





Louis Albertse, winner of the 2024 Waterfall City Tournament of Champions.



Casandra Alexander, Waterfall City's brand ambassador, in action at the Waterfall City Tournament of Champions 2024.

is a great showcase of what South Africa is doing in golf and the depth of our game. It was great to compete with the Sunshine Ladies Tour professionals, and Casandra pushed us quite close that week. The talent in South African golf is very deep."

This year, expect even more fireworks. The field is stacked with champions: Order of Merit winners, rising rookies, international victors, and wildcard surprises. The amateurs and professionals will compete over 72 holes of stroke play, while the SADGA golfers will compete over 36 holes of medal play.

This spectator-friendly tournament will return with an upgraded Spectator's Village making sure there is fun and activities for the whole family. You can expect a kids' zone with loads of activities, food and drink vendors, music and of course, the best of the best in golf. There will also be comprehensive TV coverage of the event on SuperSport Channel 213 Golf.

"We are very proud to be associated with the Sunshine Tour, which strives for excellence, as do Waterfall City Management Company and our associates. We also appreciate the innovative format of the tournament. It echoes the innovation we apply to both the design and management of our city, which aligns perfectly with our mission of creating a place where people love to be," said Willie Vos, CEO of WCMC.

"We're looking forward to another world-class showcase of the depth in South African golf and giving our fans a look at what they can expect from the remaining tournaments on the Sunshine Tour and Sunshine Ladies Tour," added Thomas Abt, Commissioner of the Sunshine Tour.

Why you need to be there:

- **Champion vs. Champion:** Witness the best of the best, from the Sunshine Tour to the Sunshine Ladies Tour, and the incredible athletes of SADGA.

- **Action-packed 9 holes:** A unique 9-hole composite design means you'll see twice the action, no matter where you stand.
- **Family Fiesta:** Forget the "quiet please" whispers. This is a vibrant, modern event with a buzzing spectator village, a dedicated kids' zone, delicious food, drinks, and live music. It's a day out for everyone.
- **Weather? Perfect!:** Soak up that glorious South African sunshine while watching world-class golf.
- **Inclusivity rocks:** Witness the power of sport to unite, as SADGA golfers showcase their incredible talent.
- **Casandra's homecoming:** Cheer on Waterfall City's very own golf ambassador!

### Don't miss out!

Mark your calendars for May 22-25. This is Joburg's premier family day out, and you don't want to miss it.

**Witness champions in action. Be there!**



**Date:** 22-25 May 2025  
**Venue:** Royal Johannesburg Golf Club's East Championship Course  
**Tickets:** Available from <https://sunshinetour.com/tickets>  
**Price:** R100 per ticket



# RECOGNISING EXCELLENCE

at the WCMC Prestige Property Awards

**O**n 5 March 2025, Waterfall City Management Company (WCMC) hosted the inaugural WCMC Prestige Property Awards, an exclusive event dedicated to recognising the outstanding contributions of real estate agents operating within Waterfall City. Held at the elegant Olives & Plates restaurant at Ellipse Waterfall, the event was a heartfelt expression of appreciation for the estate agents who play a pivotal role in shaping our thriving community.

Real estate agents are integral to the continued growth and success

of Waterfall City. They introduce new residents, foster community engagement, and drive property sales that contribute to the success of our residential estates. The Prestige Property Awards were created to acknowledge their hard work, dedication, and involvement in our ecosystem.

The event brought together 53 real estate agents from 27 esteemed agencies, all of whom have made significant contributions to Waterfall City's dynamic property landscape. One of the event highlights was an inspiring address by WCMC CEO, Willie Vos. Willie took guests on a journey

through the history of Waterfall City, sharing insights into its development and future aspirations. He presented compelling data on the city's rapid residential growth over the years and reinforced the importance of agents' efforts in helping achieve Waterfall City's vision.

A key moment of the event was the announcement of the top-performing agents from each estate. These individuals were recognised as the best in their respective areas, having demonstrated exceptional sales achievements and client service over the past year.







Best Property Practitioner in Waterfall Country and Village Estates and overall 1<sup>st</sup> Place winner, Andrew Pearce from Platinum Residential.



Best Property Practitioner in Waterfall Valley and Waterfall Hills, and overall 2<sup>nd</sup> Place winner, Sue de Klerk from Jawitz Properties.



Martin Fourie from EIA Publishing handing over the 1<sup>st</sup> Prize to the proud Platinum Residential team.



## Top Estate Agents of 2024

- 1. Waterfall View:** Amanda Katergerakis – Remax Capital (Waterfall)
- 2. Waterfall Valley Mature Lifestyle Estate:** Sue de Klerk – Jawitz Properties
- 3. Waterfall Hills Mature Lifestyle Estate:** Sue de Klerk – Jawitz Properties
- 4. Ellipse Waterfall:** Nicky Makhathini – Kent Gush Properties (Echo/Tricolt)
- 5. The Polofields:** Deidre Bruintjies – EXP Realty
- 6. Kikuyu:** Marriam Khan – Rawson Paulshof (Petigee Properties)
- 7. Munyaka:** Elisha Paul – Kent Gush Properties
- 8. Waterfall Country Estate:** Andrew Pearce – Platinum Residential
- 9. Waterfall Country Village Estate:** Andrew Pearce – Platinum Residential

## And the overall winners are...

**1<sup>st</sup> Place:** Andrew Pearce – Platinum Residential  
**Prize:** A full-page advertisement in the *Waterfall City Magazine*, valued at R23,000, sponsored by EIA Publishing.

**2<sup>nd</sup> Place:** Sue de Klerk – Jawitz Properties  
**Prize:** A luxurious one-night stay, including dinner, bed, and breakfast, plus a R1,000 spa voucher at the Riboville Boutique Hotel and Restaurant, sponsored by CDH - Cliffe Dekker Hofmeyr, WCMC's legal partner.

**3<sup>rd</sup> Place:** Jessica Hofmeyr – This Is Me Properties.  
**Prize:** A stylish, genuine leather laptop bag, sponsored by WCMC.

The inaugural WCMC Prestige Property Awards was more than just a celebration; it was a testament to the vital partnership between Waterfall City and the dedicated real estate professionals who have helped the development flourish. We sincerely thank each agent for their commitment, passion, and hard work in helping us create a place where people love to be.





**BLIND DESIGNS®**  
REFLECT YOUR STYLE

## IMIBALA

### Design Style: Artistic

Imibala is a celebration of colour and expression. The vibrant colour palette marks a shift away from the pursuit of neutrals and celebrates the use of colour with liberal doses of vibrant colours.



Roller Blinds



Blinds



Outdoor Blinds



Shutters



Curtains

### FIND A BLIND PROFESSIONAL IN YOUR AREA:

#### Johannesburg

Blind Time Window Innovations: 011 434 1075  
R & C Trading: 011 867 3367  
Blinds All Types: 011 972 2271  
Curtain & Blind Solutions: 011 465 9966  
Curtain Club: 011 907 9334  
Curtain & Blind Workshop: 011 262 4600  
Galaxy Blinds: 011 613 1496  
Millennium Blinds & Shutters: 072 299 4526

#### Pretoria

Picture Perfect Interior Solutions: 012 660 1184  
Matheo Blinds & Awnings: 012 991 5767

#### Northern Limpopo

Newton & Strever: 082 830 0959

#### Nkomazi Blinds

Nkomazi Blinds: 013 170 5947

#### Gqeberha

PC Agencies: 041 581 3710

#### Durban and Umhlanga

Aesthetics Shutters & Blinds: 031 303 2364

#### Ballito

Blinds All of Them: 032 946 3614

#### Knysna

Milk & Honey: 044 382 2041

#### Bloemfontein

Ralph Blinds: 072 700 4337

#### Cape Town

Total Blind Designs: 021 447 9062  
The Best Blind Company: 021 461 2122  
Onevision Systems: 072 716 9704

#### Klerksdorp

Atelier Ridwaan: 082 375 3570

#### Namibia

Touch of Style: +264-61-245303  
Color Blinds and Interiors: +264-61-302030



[www.blinddesigns.co.za](http://www.blinddesigns.co.za)

**WINDOVERT**  
Quality you can rely on, since 1989

[www.windovert.co.za](http://www.windovert.co.za)

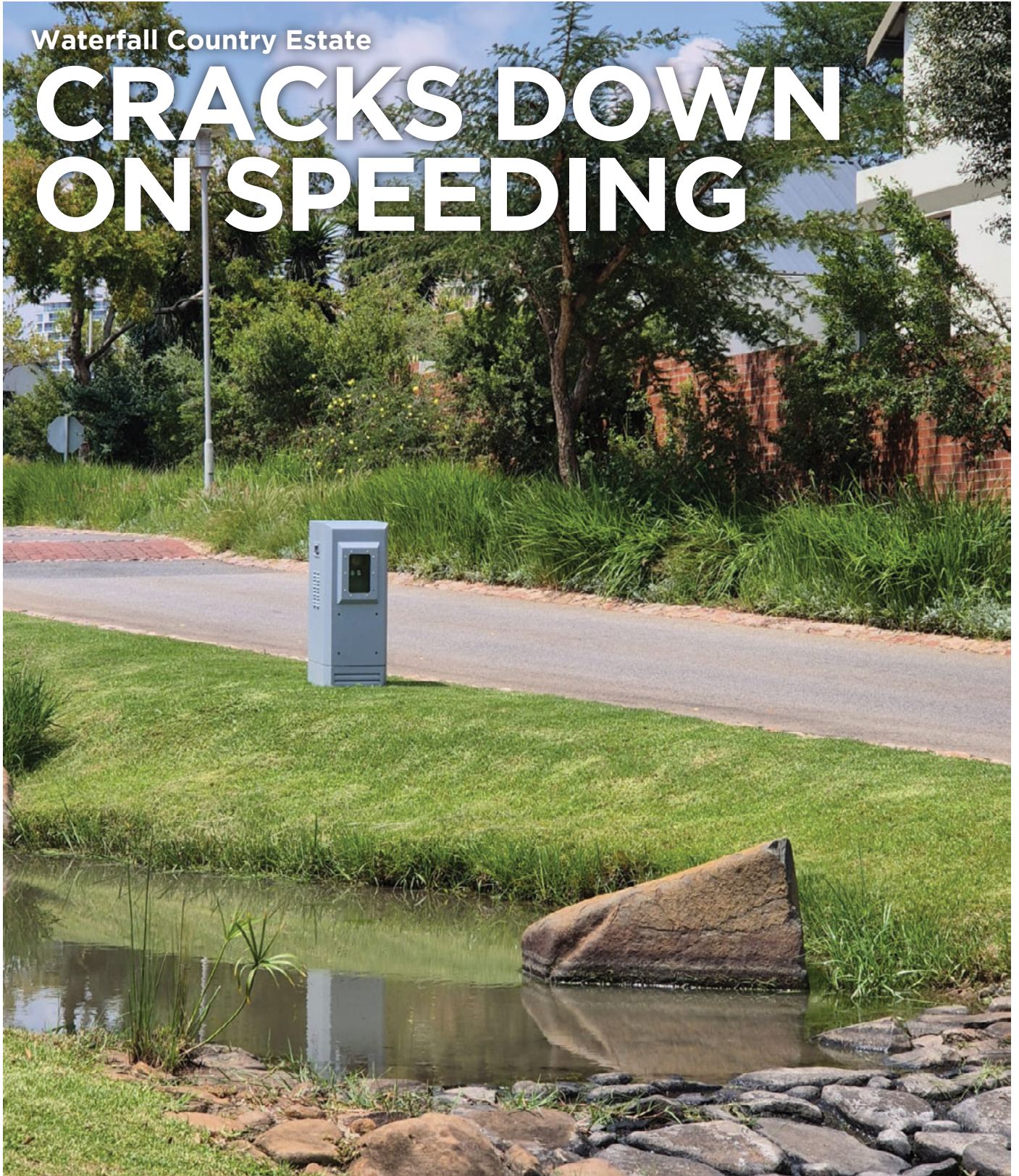
**Blind Guys®**

[www.blindguys.co.za](http://www.blindguys.co.za)



Waterfall Country Estate

# CRACKS DOWN ON SPEEDING



**W**aterfall City, a thriving hub of family life and community, has expanded exponentially over the years and so has its population. And with this growth, estates in the city are seeing more and

more vehicles on their roads. This has led to the need to address a growing concern: speeding. With sprawling residential developments and a vibrant mix of residents, from young children and teens to seniors, safety on the estate roads is paramount.

The roads of Waterfall City's residential estates have seen a worrying surge in speeding, putting children, pets, wildlife, and even pedestrians at risk. There has been a concerning upward trend that cyclists, runners and dog walkers are







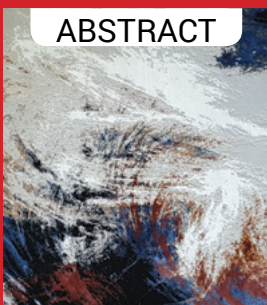
# TURKISH CARPET GALLERY

UPPER LEVEL SHOP 107  
KYALAMI CORNER SHOPPING CENTRE



## WASHING, CLEANING AND REPAIR

SIZE  
OPTIONS  
IN METRES  
7 x 5  
6 x 5  
6 x 4  
5 x 4  
5 x 3  
4 x 3



ABSTRACT



CLASSIC

065 604 1999 • 071 648 3050

# LAZIS ELECTRICAL



COMMERCIAL • INDUSTRIAL • RETAIL • RESIDENTIAL

### SERVICES:

Certificate of compliance  
Tripping & fault finding  
New installations  
Maintenance

Faulty geysers, stoves & ovens  
Repairs: plugs, light switches etc.  
Gate motors & electrical fences

Call: 073 127 3921 / 063 703 0220

Special offer  
for garden  
and pool  
maintenance

## CREWCUT GARDENS & POOLS



Special Price  
for supply  
and spread of  
lawn dressing  
and compost

PETER: 082 450 1111  
Email: peter@crewcut.co.za

OFFICE: 082 877 7805

## Cleaning Specialists

We offer cleaning and hygiene services  
in the Midrand Area

### Our cleaning services include:

Carpet, Mattress & Upholstery Cleaning  
Window & Curtain Cleaning  
Disinfecting  
Canopy/Extractor Fan Cleaning  
Office Cleaning  
Pre/Post Occupational Cleaning  
Deep Cleaning  
Solar Panel Cleaning

### Our hygiene services include:

Hygiene Dispensers  
Deep Cleaning Ablutions  
Chemicals and Consumables  
And so much more...



011 675 5956  
076 983 0308

Sales@eptapestandclean.co.za



Call today:

071 875 0218 or 012 654 2513

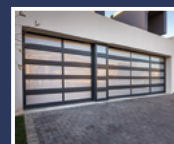
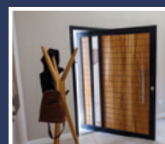
### Our services include:

Blocked Drains  
Leaks  
Burst Geysers  
Alterations  
New Installations  
Electrical Work  
General Maintenance



**VAN ACHT**  
Windows and Doors

Since 1986 - Companies come and go, we are here to stay !



Aluminium - Supply & Installation  
Doors, Windows & Contemporary Garage Doors

Showroom  
148 Industrial Rd, Kya Sands

Phone: 011 708 2488 or 010 593 7997

www.vanacht.co.za ■ sales@vanacht.co.za



Trading screen time for

# GREEN TIME

To recognise the importance of wetlands in the natural ecology of Waterfall City, and to belatedly celebrate World Wetlands Day, which was in February, a free guided nature walk was held at Waterfall Country Village Estate in early March.

Led by a team of experienced guides from Kloofendal Nature Reserve, namely Karin and Steve Spottiswoode and Rico van Schalkwyk, along with Ruan Spies, the Environmental Manager at Waterfall City Management Company, the event was exclusive to resident families, and the perfect opportunity to truly unplug. In a world of endless notifications, constant scrolling, and screen time battles, it was time to swap blue light for sunlight, status updates for in person conversations and virtual reality for the real deal!

The route started in the kid's play area of the estate, where, after a brief intro, the walk began. A group of around 20 residents walked for roughly two hours, covering approximately one kilometre of green trails. The guided tour quickly

morphed into an interactive demo on the eradication of invasive plant species – a timely lesson given the recent explosive growth fuelled by heavy rains. Residents learned to spot the shifty morning glory (*Ipomoea purpurea*),

and other botanical bullies threatening the estate's 80 hectares of green space.

"Everyone knows blackjacks (*Bidens pilosa*) and khakibos (*Tagetes minuta*) and whilst they can be problematic, they are not listed in either of the four categories in the National Environmental Management: Biodiversity Act, which essentially prioritises severity of alien and invasive species. While we recognise that we have many areas in which these well-known weeds occur, it is important to note that there are other, much more problematic plants that we want to teach residents to identify, so that they do not take hold in gardens and road verges," explained Ruan.

For example, Pampas grass (*Cortaderia selloana*) is an ornamental grass species native to South America and is often a popular garden choice. However, it is severely invasive and extremely difficult to eradicate in wetlands.

On a national level, according to a 2010 study<sup>1</sup> by De Lange and Van Wilgen, invasive alien plants cost South Africa approximately R6.5 billion per



Dr Steve Spottiswoode and Karin Spottiswoode from Kloofendal Nature Reserve lead the nature walk.





annum, representing about 0.3% of the country's GDP at that time. The study also warned that these costs could escalate to over 5% of GDP if invasive species were allowed to spread unchecked.

Considering this, it is no surprise that invasive plant species are one of the biggest hurdles for the landscaping teams at Waterfall City, especially at Country Village and Country Estate, which is why Ruan and his team believe it is so important for residents to be educated.

"Our most problematic invasive plant is the pompom weed (*Campuloclinium macrocephalum*), of which we see swathes of beautiful pink flowers across Gauteng during summer," added Ruan.



Now THAT's a Taproot!





Eradication of these and other invasive alien plants is not always straightforward. An integrated approach is required in dealing with infestations on a large scale. In Waterfall City, the landscaping team uses environmentally responsible herbicides in an attempt to minimise any collateral damage. At times, manual removal is viable, tracing the root of the plant and pulling it out.

The success of the walk wasn't just about plant identification, though. It was about connection. It fostered a sense of community, giving residents a glimpse into the efforts of the landscaping team and an understanding of the vital role they play in supporting the estate's fight against invader plants. "The fact that we were joined by Mark McClue from NGO Armour, which serves as a community voice for water regarding

City, we encourage all residents to visit Kloofendal and support their reservation efforts."

"We received some positive feedback from the participating residents, and it was good to see a couple of the younger generation in attendance," Ruan shared. "We even had a request for YouTube tutorials on how to effectively eradicate certain invasive flora species."

The walk highlighted a crucial message: participation in awareness events is essential to foster collaboration and education. The walk bridged the gap between residents and the environment, proving that a little hands-on learning can go a long way.

"We appreciate community support and involvement, as it strengthens what we can achieve together with



<p>the state of our rivers, added yet another dimension.</p> <p>“The whole experience was enhanced by the team from Kloofendal Nature Reserve, and I want to share a special thanks to them for taking the time to give their perspective and experience on the problem of invasive species. Only half an hour from Waterfall</p>	<p>efforts that are aligned. This extends beyond invasive plants where other biodiversity aspects such as erosion control in conjunction with factors such as energy, water and waste, need to be equally important,” added Ruan.</p> <p>And yes, they hope to schedule more such events! Ruan and the team have a couple of ideas when it comes to</p>	<p><i>Tree poppers</i></p> <p>possible future activities and if there are residents who would like to contribute, they welcome exploring further collaborations in conjunction with organisations like Kloofendal Nature Reserve and Armour.</p> <p>Nature’s calling, so watch this space.</p>
---	---	--

References:  
<sup>1</sup> The costs and benefits of biological control of invasive alien plants in South Africa, B.W. van Wilgen & W.J. De Lange, Centre for Invasion Biology, CSIR Natural Resources and the Environment, P.O. Box 320, Stellenbosch, 7599 South Africa: <https://researchspace.csir.co.za/server/api/core/bitstreams/e9250906-c5e7-49a3-910a-51dc962a6213/content>

possible future activities and if there are residents who would like to contribute, they welcome exploring further collaborations in conjunction with organisations like Kloofendal Nature Reserve and Armour.

Nature's calling, so watch this space.

<sup>1</sup> The costs and benefits of biological control of invasive alien plants in South Africa, B.W. van Wilgen & W.J. De Lange, Centre for Invasion Biology, CSIR Natural Resources and the Environment, P.O. Box 320, Stellenbosch, 7599 South Africa: <https://researchspace.csir.co.za/server/api/core/bitstreams/e9250906-c5e7-49a3-910a-51dc962a6213/content>



## DIY ways to remove alien species found in your garden

### What to do with plants like the common blackjack and khakibos:

**Manual removal:** Find the root system of the plant; it is usually deep, depending on the age of the plant in question.

#### Uproot the plant:

- **Loosen the soil:** Use a garden fork or spade to dig around the base.
- **Pull gently:** Grab the plant near the base and pull slowly and firmly to extract the entire root system.
- **Check for rhizomes:** Ensure all underground runners (rhizomes) are removed, as they can regrow.

This works best when soil is soft after rains for easier root extraction.

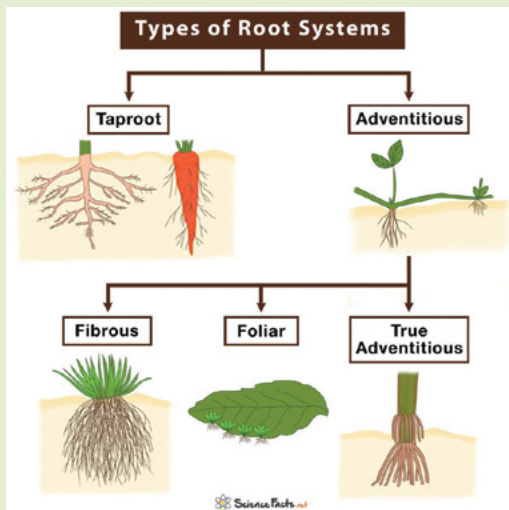


Image source: <https://www.sciencefacts.net/types-of-roots.html>

### How to remove invasive alien trees like Mulberry trees:

**Garden loppers with herbicide application:** These large scissors are used to cut down young alien trees. Apply herbicide (specifically designed for trees) responsibly to the freshly cut tree stump, which will kill the roots. Often food colourant is added to confirm treatment in large-scale applications.



Example of herbicide application on tree stumps.

**Herbicides:** There are many variants for various applications. In residential gardens, it is probably best reserved for those pesky paper thorns (*Alternanthera suessenguthii*) or hard surface weeds where manual removal is bound to leave some of the roots intact.

**Tree popper:** This is a mechanical device (Ruan's team calls it the hooligan tool). Using leverage, it grips the tree stem. You lever it back and forth until you dig the roots out. It takes some getting used to but is fine for light infestation although probably not a tool lying around in everyone's garden shed.



Image source: <https://treepopperusa.com/>



**COLCACCHIO**  
pizzeria



*Fuel Your Lunch Hour*

**INSALATA WRAP**  
AND A BEVERAGE

**R95**

AVAILABLE FOR SIT-DOWN ONLY UNTIL 17H00. BEVERAGE OPTIONS INCLUDE JUICE, WATER, COFFEE, TEA, OR SODA. OFFER AVAILABLE FOR A LIMITED PERIOD ONLY. T&CS APPLY.

COLCACCHIO WATERFALL | 010 205 9004 | 010 596 8941

**FOR ALL YOUR BUYING  
AND SELLING NEEDS  
CONTACT ME**

MARRIAM KHAN  
**073 160 8822**



BEST PROPERTY PRACTITIONER IN KIKUYU 2024

**Marriam Khan** | Sales Partner  
Non Principal Property Practitioner  
Registered with the PPRA  
073 160 8822 | marriam.khan@rawson.co.za  
[www.rawson.co.za](http://www.rawson.co.za)

**RAWSON**  
Properties

YOUR NEIGHBOURHOOD EXPERTS  
FOR THE LAST 40 YEARS

## RESIDENTIAL ELECTRIC MOBILITY VEHICLE BUILT FOR PERFORMANCE

- Speed 40km/h
- Safety Belt 3 Point
- Battery 150Amp Lithium Iron
- Steering Power Assist
- 72 Volt Motor 5kW/7.5kW
- Display 12.95" LCD
- Range 120-160 km
- Wheels 14" All-Terrain
- Charger On Board 20Amp
- Sound 4 Speakers

Luxury meets performance in this state-of-the-art electric cart. With a lithium battery delivering up to 160km per charge, a DALA 400A controller, and 4-wheel hydraulic disc brakes, it's built for power and precision. Enjoy a 12.95" LCD display with CarPlay, a 4-speaker sound system, LED lighting, and electric power steering. Backed by a 5-year battery warranty, this cart is designed for those who demand the best.

**ALTILIUM EV**  
082-805-1097  
[WWW.ALTILIUMEV.CO.ZA](http://WWW.ALTILIUMEV.CO.ZA)  
[INFO@ALTILIUMEV.CO.ZA](mailto:INFO@ALTILIUMEV.CO.ZA)



# A PREMIERE TO REMEMBER

**Waterfall City Cares rolls out the red carpet for senior residents**

**H**ome to two phenomenal Mature Lifestyle Estates, Waterfall City is all about celebrating our senior citizens, offering a vibrant community and an active lifestyle worth retiring to. There is always something on the go to enjoy and this was no different on the morning of 5 March, when the Waterfall City Cares team treated the residents of the Waterfall Hills and Waterfall Valley Mature Lifestyle Estates to an exclusive, complimentary preview of the new Jessica Lange movie, *The Great Lillian Hall*.

The special viewing was held at Ster-Kinekor Mall of Africa, where our guests were greeted with a free popcorn and drink each before the show began.

The movie follows Broadway actress Lillian Hall pouring her heart and soul into preparing for her next big role, but finding herself blindsided by confusion and forgetfulness. Our guests thoroughly enjoyed themselves, raving about the brilliant acting and thanking the Waterfall City Cares team for the special event.

A heartfelt thank you to Filmfinity ZA, The Social Media Company, and Ster-Kinekor for making this preview possible, and to our residents for making it a resounding success. Such events form a core part of our community building and celebrating senior living at Waterfall City and we look forward to hosting more in the future.

*The Great Lillian Hall* is now showing in cinemas nationwide – a must-see for movie lovers!





Mall of Africa's new

# VIBRANT BRAND CAMPAIGN

**A**ttacq's flagship retail hub, Mall of Africa, has unveiled a new brand campaign that embodies progressive evolution. Crowned the country's "Coolest Mall" for the seventh consecutive year at the 2024 *Sunday Times* Generation Next Awards, Mall of Africa continues to set the standard for premium retail, style, and innovation. This latest campaign reaffirms its position as a leader in the retail landscape, blending sophistication and cultural relevance with forward-thinking design to captivate and inspire modern shoppers.

In line with Attacq's strategic vision for vibrant precincts, this campaign strengthens consumer connections, fosters engagement, and enhances the Mall's reputation as a key player in the local retail landscape. The campaign presents a fresh visual identity and messaging that captures the Mall's essence as a destination where fashion, beauty, culture, and unforgettable experiences come to life.

## Creative storyboard and direction

The campaign celebrates Mall of Africa as a global connector, where African heritage meets international style. Supported by Attacq's strong commitment to innovation and aligning with Waterfall City as a place of connection and commerce, the culturally rich visuals and contemporary aesthetics showcase the Mall as a hub driven by African excellence.

With dynamic, aspirational, and inclusive storytelling, the campaign aims to resonate with local shoppers



and international trendsetters. Bold taglines and immersive video content blend South African identity with global appeal.

## A fusion of local and global brands

Mall of Africa presents a unique blend of local craftsmanship and global





luxury, with a carefully curated mix of home-grown and international brands, reflecting the Mall's diverse fashion and lifestyle offerings. Mall of Africa is not only home to flagship and concept stores of the country's most popular retailers but also hosts a mix of unique outlets.

International labels like Decathlon, EL&N, Emporio Armani, Jo Malone, Skins Cosmetics and Michael Kors provide a global shopper experience. Highly sought-after local brands such as Beauty on Tapp, Era by DJ Zinhle, Maxhosa AFRICA, and Valora offer a rare experience that expresses innovation and cultural influence, presenting shoppers with something exceptional and, in many cases,

unavailable anywhere else.

SOOK Mall of Africa offers another dynamic layer, featuring varying designers, brands and retail concepts on a seasonal basis, ensuring that there is always something fresh and unexpected for shoppers to discover. This forward-thinking approach mirrors Attacq's strategy for enhancing shoppers' experiences while maintaining high occupancy rates.

### **A bold vision**

The new brand campaign cements Mall of Africa as Africa's leading lifestyle hub, strengthening the Mall's connection to both local shoppers and global trendsetters.

"Mall of Africa represents the very best of what Attacq has to offer: thriving spaces, world-class experiences, and strong community. Beyond being a retail and lifestyle destination, Mall of Africa is a reflection of Africa's global influence. This campaign celebrates our cultural richness and fashion-forward shoppers. We are proud to offer a world-class shopping experience that connects Africa to the world and the world to Africa," says Yasmeen Lorgat, General Manager at Mall of Africa.

**For regular updates, follow  
Mall of Africa:**

[https://www.instagram.com/\\_themallof africa/](https://www.instagram.com/_themallof africa/)  
and <https://mallof africa.co.za/>.





Where **businesses**  
come to **grow.**

[waterfallcity.co.za](http://waterfallcity.co.za)





**WATERFALL  
CITY**

**Nexus 4  
pre-letting  
now**

Position your business for success at Africa's  
smart city of choice – Waterfall City.

**Connect with our leasing team today.**

Leasing  
**Justin Smith**  
**082 362 0800**

Broker Enquiries  
**Lunga Sikutshwa**  
**083 200 2576**

Attacq Management Services Proprietary Limited, a wholly owned subsidiary of Attacq Limited, is registered with the PPRA and holds a fidelity fund certificate and trust account in terms of the Property Practitioners Act 22 of 2019.





# Transform your space, Transform your life.

*Inspiration for every day!*

## DÉCOR & LIFESTYLE

ISSUE 1 • 2025

Creating spaces  
that reflect who  
you are

Interior design  
trends that elevate  
everyday space

How modern  
estates are  
building  
community

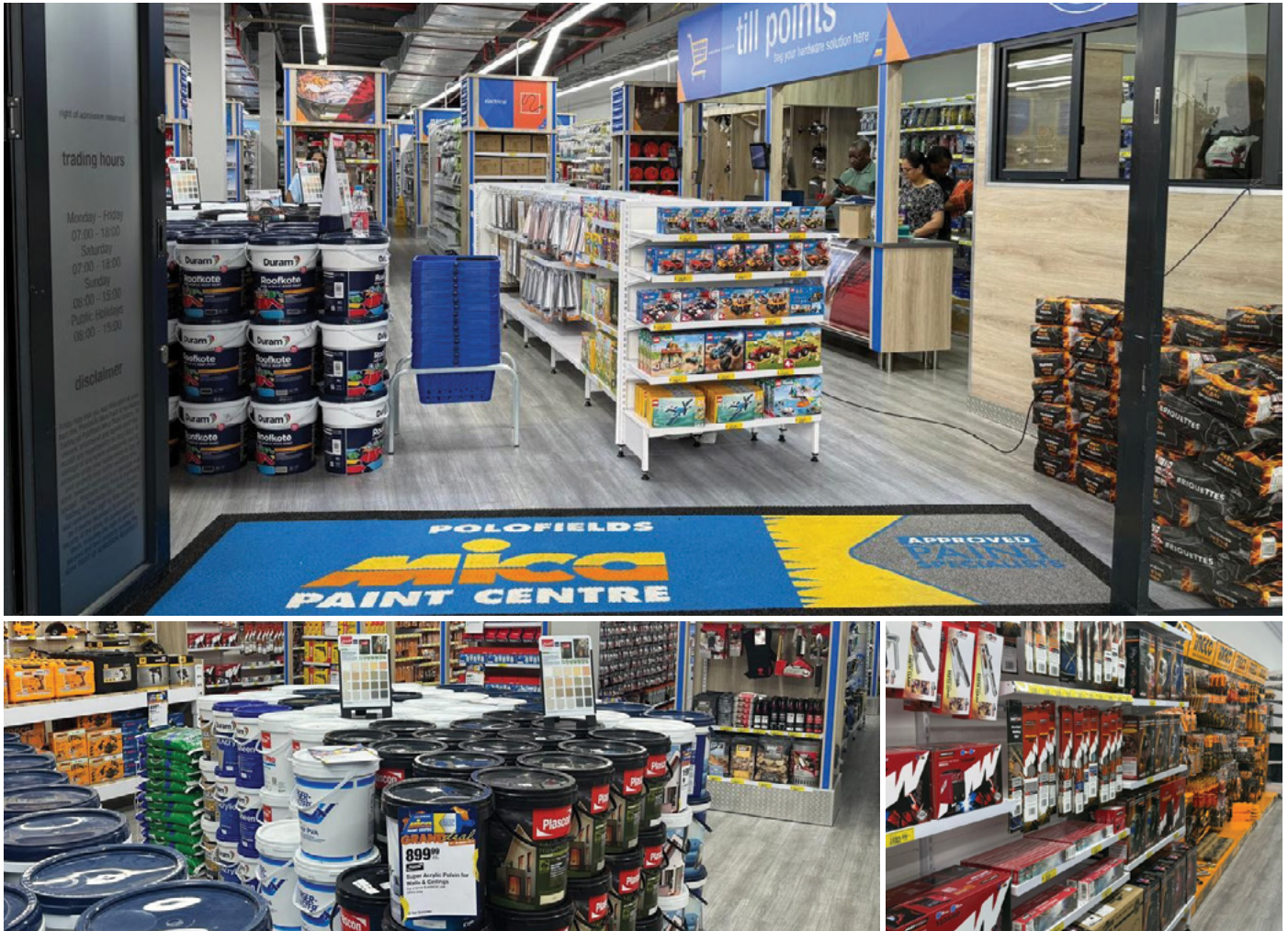
An EIA Publication 

**CLICK  
HERE TO  
VIEW**



# NEW IN THE HOOD

**Hello Mica!**



**W**aterfall City, your all-in-one hardware store has arrived at Polofields Crossing! Mica Polofields is more than just paint and DIY – they are your complete hardware and building supplies destination. Whether you're building from scratch, renovating, or maintaining your home, they've got you covered with top-quality building materials, tools, and expert advice. From sand, stone, cement, and bricks to power tools and paint, Mica Polofields has everything you need to get the job done right. With over 50 years of industry experience, the team will help

guide you every step of the way.

Mica is the home of "Let Us Show You How" and one of Sub-Saharan Africa's largest hardware franchises, specialising in building supplies, paint, power tools, garden and pool care, plumbing, electrical, the outdoors, and much more. Shop top brands like Ryobi, Ingco, and premium paint ranges like Plascon, Duram, plus others.

The team strives to continually re-engineer and innovate to be at the forefront of new developments in the retail hardware industry. Considered the No. 1 Home Improvement Brand

– South African consumers' brand of choice – Mica is the convenient place to go for expert advice and assistance for any home project.

Waterfall City finally has a full-service hardware store right on its doorstep! Visit Mica Polofields Crossing today and let's get building, renovating, maintaining and improving - together.

**Shop 9, Polofields Crossing,  
Waterfall City**  
**Monday to Saturday: 07:00 to 18:00**  
**Sundays & Public Holidays:**  
**08:00 to 15:00**  
**010 017 4677 / 076 967 5511**



# CHANGE YOUR LIFE. GUARANTEED.

Embrace the great outdoors without compromise.  
Best Deck's premium composite wood products never fade,  
crack or splinter and come with a guarantee of **up to 25 years**.

ENJOY YOUR ULTIMATE LIFESTYLE IN COMFORT, WITH VALUE THAT LASTS.  
**WELCOME TO THE GREAT OUTDOORS.**

010 500 2897 | [bestdeck.co.za](http://bestdeck.co.za)

Riversands Outlet Park, Riversands Boulevard, Midrand

**BEST  
DECK**  
• COMPOSITE WOOD •



# MUST DO

It's all about fun and festivities this April at Waterfall City! With Easter just around the corner, get ready for eggciting celebrations, family gatherings and indulgent seasonal treats. Here are some Must Dos that will make April unforgettable!

## HAVE AN EGGCELLENT EASTER

### Join our eggciting Easter hunts!

#### Hop to Polofields Crossing

The Easter Bunny has hidden hundreds of cardboard Easter eggs around Polofields Crossing in preparation for the biggest Easter hunt weekend ever! Find one and exchange it for a chocolate prize at the Easter stand. Shoppers who discover an egg can also enter a raffle to win back the value of their purchase (minimum of R150 spend). Plus, enjoy free Easter fudge.



**Polofields Crossing**  
18 – 19 April  
09:00 – 14:00



#### The Hunt is on at Waterfall Wilds

Make Easter Saturday eggstra special by lunching at one of Waterfall Wilds' participating restaurants, grabbing a basket and hunting for traditional Easter eggs in their beautiful gardens. And the Easter Bunny will be on hand to help the kids find all the treats.

**Waterfall Wilds**  
19 April  
13:00 – 15:00

#### Waterfall City Cares

##### Give Blood, Save Lives

Be a hero in just 30 minutes! Roll up your sleeve, give blood, and give hope at the blood donation station. Your single donation can help save up to three lives!

19, 20 and 21 April  
10:00 - 16:00  
Polofields Crossing  
Marquee next to West Pack Lifestyle

25 – 27 April  
Game Court  
Mall of Africa







### Country Fresh pop-up

Get ready to treat your taste buds! From 15 – 21 April, visit the Country Fresh pop-up in the Spur Court at Mall of Africa and be among the first to try the exciting new flavours; lemon cream and drool-worthy blueberry and cheesecake.

Enjoy a fun-tasting experience, snap a selfie at the photo station, and stand a chance to win spot prizes! Don't forget to share your moment using our hashtags – it's a flavour-filled experience you don't want to miss!

15 – 21 April  
Spur Court  
Mall of Africa



### Unlock your flavour with Robertsons

Discover bold tastes with chef-created dishes, craft your very own Masterblend, and explore the full Robertsons spice range at the sensory station. Plus, you can enjoy fun games, instant prizes and get to meet some of your favourite influencers and *Big Brother Mzansi* stars. Don't miss the ultimate spice experience!

22 – 28 April  
Spur Court  
Mall of Africa



### A birthday celebration

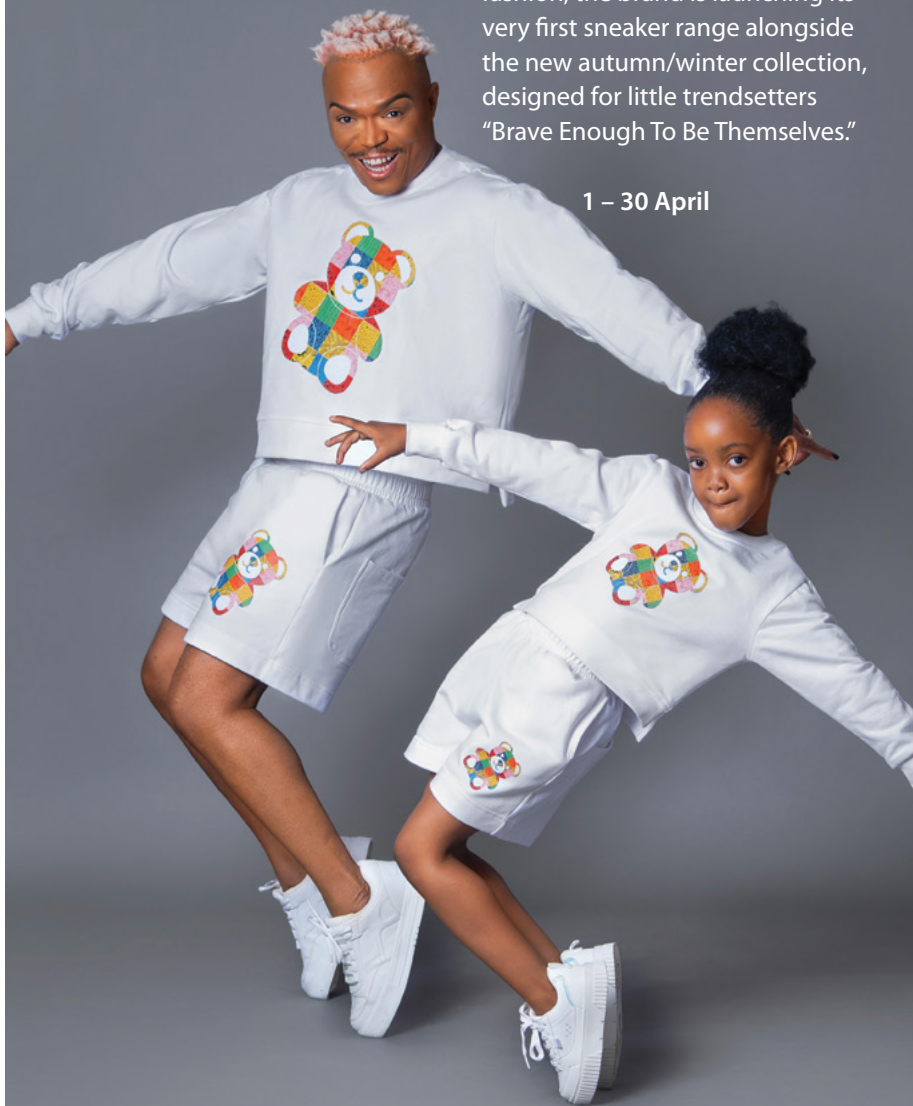
Mall of Africa is turning 9 on 28 April! To celebrate and to thank you for your support, you can enjoy complimentary parking on this special day. Hip Hip Hooray!

28 April

### SOOK Mall of Africa

Get ready for a fun-filled fashion experience this April as Sompire & Sompire Kids take over SOOK Mall of Africa. Known for their bold, high-quality kids' fashion, the brand is launching its very first sneaker range alongside the new autumn/winter collection, designed for little trendsetters "Brave Enough To Be Themselves."

1 – 30 April







## Waterfall City Competition

### Win movie tickets to *Sneaks*

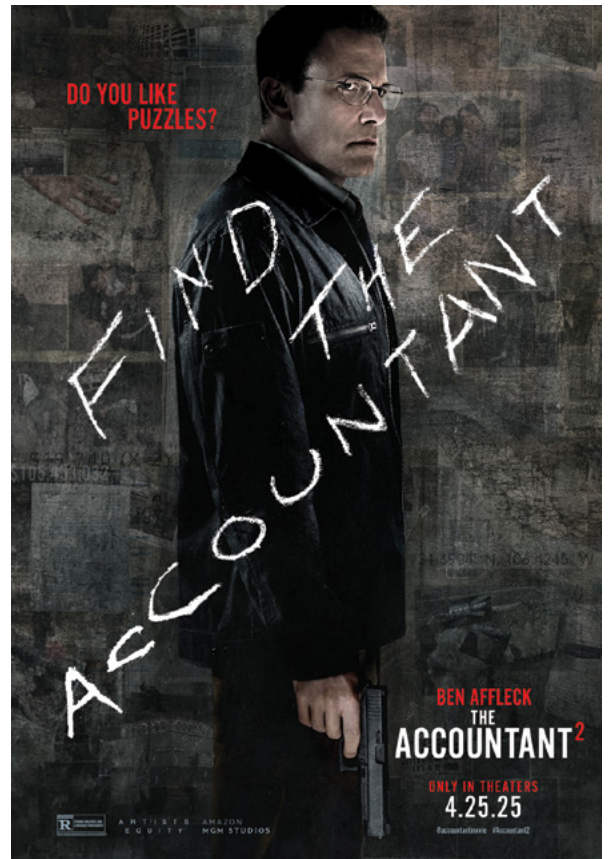
Tell us the name of the designer sneaker that unwittingly finds himself lost in New York City, and you could win 4 movie tickets to *Sneaks*, starting 10 April at Ster-Kinekor Mall of Africa.

Email your answer to [competitions@waterfallcity.co.za](mailto:competitions@waterfallcity.co.za) along with your name and contact number.

Competition closes on 15 April

Winner to be announced on 17 April

Ts & Cs apply



### What's on at the movies?

Here are this month's exciting new movie releases from Ster-Kinekor

04 April: *Minecraft*

10 April: *Sneaks*

25 April: *The Accountant 2*

Book today: [www.sterkinekor.com](http://www.sterkinekor.com)

Ts & Cs apply



## Our schools are cool

### Did you know?

LittleHill Kikuyu Montessori is just 650m from Munyaka Estate, making it a short and safe walking distance for both Kikuyu and Munyaka residents and their little ones!

They provide a caring environment for toddlers aged 18 months and older, where they can explore, grow, and thrive. The Montessori approach fosters independence and creativity, with a focus on hands-on, real-world learning.

Enrol your child today and enjoy quality education on your doorstep!

LittleHill Kikuyu Montessori

010 541 1767

[kikuyu@littlehill.co.za](mailto:kikuyu@littlehill.co.za)





**Netcare Sunninghill  
Hospital**

# LIFESAVING HEART OP

**A**t just over a year old, little Oaheng Twala's heart condition took a serious turn. Without an urgent operation, her life was in peril. Thanks to medical teamwork and the Netcare Foundation, she is now a thriving, active toddler with an unquenchable sense of curiosity.

"When Oaheng was about six weeks old, she suddenly started turning blue, struggling to breathe, and had bubbles coming from her mouth. We were so frightened and took her to hospital in Klerksdorp, where she was admitted for treatment for a chest infection. We had no reason to suspect an underlying condition," says her mother, Keabetswe Twala.

When the little girl's chest infection improved, doctors were able to detect a heart murmur. They noticed that Oaheng's oxygen levels remained lower than normal, prompting a referral for further testing. "On the day we learnt of our daughter's heart condition, everything fell apart for us," she recalls.

For a time, Oaheng's condition stabilised. Still, soon it became evident she would need surgery to correct a hole between the upper two chambers of her heart, a congenital heart defect known as atrial septal defect.

Mande Toubkin, general manager of emergency, trauma, transplant and corporate social investment (CSI) at Netcare, says there is an overwhelming need for specialised paediatric heart operations, which are highly resource-intensive.

"When we learnt of Oaheng's situation, her condition had worsened and required urgent intervention. We





This life-changing procedure has given her a brighter future, and we are deeply appreciative of the hard work, dedication, and kindness shown by everyone during her stay," Mr Twala says.

The family extended a special thank you to Dr Lebea for her compassionate guidance throughout the entire process and heartfelt appreciation to the skilled cardiothoracic surgeons, whose meticulous approach ensured that Oaheng was in good hands. "We would also like to express our gratitude to Dr Klebe for your gentle and tender approach."

Little Oaheng has since become more talkative and developed a healthy appetite for her favourite foods, mash and lasagne, and a particular passion for trying on her mother's shoes and handbags, as well as playing outdoors.

"Oaheng's name means 'To Build', and now we can really see her interests and curiosity coming through more strongly. We are so grateful our daughter now has the chance to build her life thanks to this procedure," Mrs Twala says.



resolved to find a way to help her as soon as possible," Toubkin says.

Dr Mamaila Lebea, a paediatric cardiologist who practises at Netcare Sunninghill Hospital, applied to the Netcare Foundation and Maboneng Heart and Lung Institute based at the hospital to request urgent assistance in making it possible for Oaheng to have the operation.

Cardiothoracic surgeon Dr Erich Schürmann, who leads the Maboneng Foundation and Dr Martin Myburgh of the Maboneng Heart and Lung Institute, paediatric cardiologist Dr Janine Meares, as well as anaesthetist Dr Edith Klebe and cardiac perfusionist Mr Thulas Dladla all committed their time and expertise pro bono to help the little girl and her family in their hour of need.

"If untreated, a hole in the septum the size Oaheng was suffering from, can be debilitating and life-threatening. As the child grows, the heart defect ultimately damages the arteries of the lungs. Fortunately, we were able to close the hole in her heart successfully, and her prognosis is bright," Schürmann says.

Dr Lebea says receiving the operation before Oaheng's condition progressed has made a life-saving difference to the little girl. "With the support of the doctors and the Netcare Foundation, she has a chance at a healthier future. This operation has transformed the course of Oaheng's life and offered her the opportunity to thrive," she says.

"She has healed so quickly and been so active since the operation. Oaheng knows what she wants, and now she is unstoppable! She is fascinated by the world around her, and she plays with everything – except her toys," Mrs Twala says.

Oaheng's father, Mr Kamohelo Twala expressed the family's relief and thanks for their support over this challenging time.

"Our hearts are filled with gratitude for the incredible support and care that the Netcare Foundation, Maboneng Heart and Lung Institute and Netcare Sunninghill Hospital team have provided our daughter, Oaheng.

"In this journey we have cried many tears of happiness and a little nervousness.



# THE GREAT WEALTH TRANSFER

**How to make it last  
beyond three generations**

By Thomas Berry, Head of Sales at PSG Wealth

**A** study by The Williams Group, which tracked 3,200 families over two decades, has found that 70% of wealthy families lose their fortunes by the second generation, and 90% by the third. Interestingly, this trend transcends geography and culture, as reflected in the Chinese proverb *"Wealth does not last beyond three generations"*, which echoes the American saying *"Shirtsleeves to shirtsleeves in three generations"*.

This is particularly relevant considering that the biggest global wealth transfer is underway. In the coming years, baby boomers are set to pass down more than \$68 trillion – more than double the size of the US economy. This, however, is not only an American – or developed market – phenomenon, but a global one, affecting wealthy families around the world, including in South Africa.



Thomas Berry, Head of Sales at PSG Wealth

The economic impact of any intergenerational wealth transfer depends mainly on how it is managed. Some beneficiaries may reinvest in commerce, real estate

or education. Still, there is always a risk that others may opt to pay off debt or fund early retirements rather than fuelling economic growth. Governments, too, are likely to increase scrutiny around inheritance tax, adding another layer of complexity to generational wealth transfers.

## **The current risks facing Great Wealth Transfer beneficiaries**

Disputes, lawsuits, or reckless spending can quickly erode fortunes if proper succession planning isn't in place. Unfortunately, many families fail to implement the necessary structures to protect their wealth over time. Sound financial education is one of the most critical factors in effective intergenerational wealth transfer. A sudden influx of wealth and a lack of financial literacy can lead to poor investment decisions,



overspending, and, in extreme cases, complete financial ruin. For instance, a recent baseline survey by the FSCA has shown that only 51% of South African adults are financially literate. Without guidance and education, heirs risk making decisions that diminish their inheritance.

Furthermore, it is often assumed that wealthy families openly discuss financial matters with their children, but studies suggest otherwise. A reluctance to discuss finances can leave heirs unprepared to manage their wealth effectively, making them vulnerable to making poor financial choices.

Additionally, the modern economy presents new challenges. Inflation, economic downturns, and geopolitical instability could erode wealth if it is not carefully protected and invested. As wealth becomes increasingly tied to financial markets, a thorough and well-thought-out financial plan should be implemented to avoid client fortunes diminishing faster than anticipated.

### **The solution: Long-term planning and financial education**

There is a well-known saying by Warren Buffet that aptly illustrates why long-term wealth planning is essential: "Someone's sitting in the shade today because someone planted a tree a long time ago". We repeatedly see that generational wealth is not self-sustaining; it requires active management, strategic planning, and patience.

For younger generations, growing up in a digital world provides an opportunity to enhance financial literacy and investment strategies through online platforms, digital financial tools, and educational courses on personal finance. By leveraging technology, Gen Z and millennial heirs can better understand wealth management and



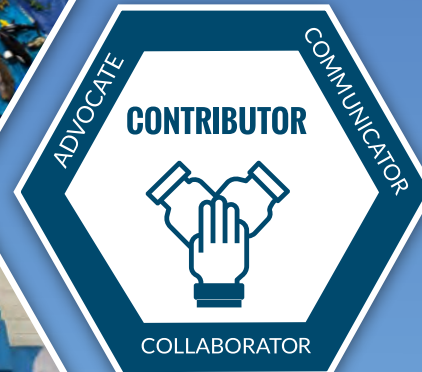
ensure their inheritances last.

From a macroeconomic perspective, the ongoing wealth transfer could drive significant economic growth –

but only if it is managed effectively. True generational wealth is not just about passing down assets; it's about passing down the knowledge and discipline needed to sustain them.









Since 1982

# AMERICAN INTERNATIONAL SCHOOL OF JOHANNESBURG

Pre-K 3 (000) – Grade 12  
Campuses in Pretoria & Johannesburg

From before birth, children are **connected** to their **families, communities, and cultures**. Every child is born with a spark of **curiosity**—an eagerness to **explore** and understand.

The **first steps** shape a lifelong love of learning, with each experience and discovery **fueling their growth** and setting the **foundation** for a lifetime of exploration.

## WORLD-CLASS *Early Childhood* EDUCATION



Early Childhood Program  
Ages 3 and 4



Inquiry and Play-Based  
Learning



Embracing Neurodiversity



Northern-Hemisphere  
Calendar (August-June)



Investing in your child's  
future. Annual Fees USD \$9 800



Global Friendships,  
80+ Nationalities

*Future* READY, *Fun* TODAY!

**YEAR-ROUND ADMISSIONS. START THE JOURNEY TODAY!**

[admissions@aisj-jhb.com](mailto:admissions@aisj-jhb.com) | [www.aisj-jhb.com](http://www.aisj-jhb.com)

EMAIL US







# LIVINGSTONES GARDEN & HOME

A Legacy of Excellence



**F**or nearly four decades, Livingstones Garden & Home has been the trusted name for South Africans looking to elevate their outdoor spaces. Established in 1986 by David Dunkley and Peter Anderson, this Woodmead-based store has built a reputation for top-tier gardening and home equipment, expert advice, and an unmatched commitment to customer service.

Livingstones is not your average garden and home shop – it's a one-stop destination for everything from lawnmowers and chainsaws to patio furniture, pool care essentials, and outdoor heating and cooling solutions. Whether you're a home gardener, a passionate hobbyist, or a professional landscaper, Livingstones has the tools and expertise to bring your vision to life.

What sets Livingstones apart? "Premium brands, competitive pricing, and expert after-sales service," says David Dunkley. "Stocking industry-leading names like Stihl, Yamaha, Honda, John Deere, Makita, and Gardena, every product is backed by reliable warranties and a full-service repair and maintenance department." Need assembly, advice, or ongoing support? Their highly





trained staff ensures that your equipment performs at its best for years to come.

Shopping at Livingstones means more than just great products; it's about trusted guidance, seasonal promotions, and a seamless customer experience. From Black Friday deals to in-store specials, customers always have access to exciting offers. Plus,

with a fully stocked online store and ample free, secure parking, convenience is a given.

So, whether you're upgrading your garden, revamping your patio, or looking for specialist-grade tools, Livingstones Garden & Home is the ultimate destination. Visit today and experience quality, expertise, and service that lasts.

### Get in touch:

18 Waterval Crescent, Waterfall City  
+27 11 802 4822

[info@livingstones.co.za](mailto:info@livingstones.co.za)

[www.livingstones.co.za](http://www.livingstones.co.za)

Facebook:

Livingstones Garden & Home

Instagram:

@livingstonesgardenandhome





# LIGHT UP

Lighting is like the jewellery of home décor – it can add the perfect finishing touch to your space.

**F**rom sculptural floor lamps and mid-century-inspired options to artful, iridescent sconces, there's a little something for every room and style.

It's clear that lighting design is evolving beyond mere functionality. The hottest trends in lighting are not only about illuminating spaces but also about enhancing aesthetics and wellbeing. From unique forms to sustainable solutions, the future of lighting promises to be both exciting and innovative.

In an era dominated by mass production, the demand for unique, handcrafted lighting pieces keeps surging. Artisanal fixtures, often sourced from local craftspeople, are serving as focal points in 2025, adding character and a personal touch to interiors. These bespoke elements range from hand blown glass pendants to intricately designed metal chandeliers, each telling a story of







craftsmanship and offering a refreshing break from the ordinary.

Lamp shades are making a bold visual statement this year. These vibrant decorative elements can transform a simple lamp into a striking accent piece, bringing lively energy to décor. Carefully curated material and colour can do wonders for a room's evening atmosphere. Use shades wisely to make the most of the design.

A contemporary approach to vintage design is very popular in 2025 lighting trends, blending the charm of the past with the sleekness of a present-day format. Think contemporary fittings combined with classic shapes, or antique-style sconces with updated finishes. These will allow you to go one step beyond a conventional, transitional design with a nostalgic yet fresh look, perfect for adding character to any space.

## Kitchens

Kitchen lighting in 2025 is all about merging style with practicality. From playful designs to nature-inspired materials, these trends are set to inspire the next kitchen remodel and make it the heart of a home.

As sustainability continues to be a priority, using natural materials in kitchen trends in 2025 is skyrocketing, and lighting is no exception. The "Earthborn" trend is about embracing imperfections of natural materials – knots in wood, the roughness of stone, or the woven texture of rattan. This tendency is perfect for those who love their kitchen's rustic or organic feel.

## Bathrooms

Today, the modern bathroom has become a place to relax. We need to keep this in mind when designing bathroom lighting. One principle to remember is this: incorporating more accent lighting allows one to create a warm, soothing atmosphere.

Bathrooms benefit greatly from good lighting, but exposed bare-bulb vanity lights are no longer the go-to choice. They can easily be replaced with stylish sconces or wall lights. Another option to consider is a grand chandelier or pendant light over a soaking tub. Bathrooms are a great place to experiment with bold and unique lighting.

Layered lighting is very important for any room but especially for bathrooms. Because there are a wide variety of tasks done in a bathroom (such as shaving, cleaning, grooming, applying makeup, and other general tasks), it is good to have layered lighting options designed for the specific needs of each task.

Examples of light layers in bathrooms include iridescent wall sconces to help define the space, small chandeliers to provide general illumination, or even LED up-lights installed in the shower for a unique take on task lighting.

Sources: [www.elledecor.com](http://www.elledecor.com); [www.decorilla.com](http://www.decorilla.com)







**G**lass is a solid and transparent material that is used in numerous applications in our daily lives, and it is making a comeback in design trends too.

A stylish coffee table is a living room staple, and sleek and shiny glass is back in fashion. Glass coffee tables haven't dominated the trend cycle for quite some time. Still, interior designers say they are on the rise once again. Light, airy and perfect for displaying treasured books and décor, they are the trendy (yet timeless) accessory a living room needs this year.

When it comes to lighting, versatility and longevity are often key. We want fixtures that can withstand time and keep the space looking great. This is where the timeless aesthetics and effortless functionality of glass lights come in.

Coloured glass lighting schemes are a hot trend right now. Add instant sophistication and elegance to interiors

with glass lighting. Get inspired with tinted glass pendants, ribbed glass wall lights, table lamps and floor lamps.

For a more contemporary twist, tinted glass lights are ideal. Glass fixtures with

a smoky grey tint make a great addition to modern homes leaning towards industrial or minimalist sensibilities.

The subtle, smoky finish can add a hint of drama to a space, being slightly





darker than regular glass options. These lights are ideal for creating a subdued atmosphere and are perfect for use over dining tables.

Glass lights don't just have a place inside the home. Waterproof glass lighting fixtures make excellent additions to garden patios, infusing these often-neglected areas with style and illumination.

### Tantalising tableware

Everything old is new again, and this is particularly true for glassware trends. Retro-inspired drinkware, reminiscent of the 1960s and 1970s, is making a significant comeback. From chunky cocktail glasses to mid-century modern tumblers, these pieces add a nostalgic flair while still feeling fresh and contemporary.

Colourful glassware is all about setting the mood. Morning coffee and tea feel warmer when services are provided in amber- or smoke-coloured glass coffee mugs. An evening celebration becomes more romantic when accompanied by red martini glasses, or more exciting with funky champagne glasses. Everyday drinking glasses filled with water are more calming and natural when they project colours of green or blue.

Another major trend is the slim, tall designs of glassware. These elongated glasses are elegant and ideal for



presenting cocktails, long drinks or even iced teas. Their slim profile makes them look modern and sleek, giving off a contemporary vibe.

### Around the home

Recycled glass tiles are at the forefront of sustainable bathroom tile trends. These eco-friendly tiles are crafted from post-consumer glass and are available in various colours, from translucent sea greens to vibrant blues. Their reflective surfaces turn a floor into an accent

feature, making small bathrooms feel larger and more open. Arrange them in gradient mosaic patterns or as single-colour tiles for a sustainable yet stylish floor.

Fluted glass is making a big comeback in 2025. It offers a perfect balance of privacy and light diffusion. Its ribbed surface introduces subtle texture while maintaining an airy, open feel, making it ideal for shower enclosures, cabinet doors, or even partitions.



Sources: <https://glassallianceurope.eu>; [www.homesandgardens.com](http://www.homesandgardens.com); [www.industville.co.uk](http://www.industville.co.uk); [www.foodandwine.com](http://www.foodandwine.com); <https://hakmichandjivraj.com>



# Waterfall City Classifieds

## MEDICAL SERVICES

### AUDIOLOGY/HEARING

**Hearcare Waterfall Hearing and Balance Clinic** 011 304 7920  
Free hearing screenings. Home visits in Waterfall City estates. Rooms: Waterfall City Netcare Hospital. [www.hearcare.co.za](http://www.hearcare.co.za)

### MEDICAL GENERAL

**Kyalami Health** 010 335 0625  
General practitioners/travel/aesthetics/immunisation/drip clinic pathology/mum and baby clinic/minor surgical procedures. Kyalami Downs Shopping Centre. Email: [info@kyalamihealth.co.za](mailto:info@kyalamihealth.co.za)

### MENTAL HEALTH

**J.A Therapy** 079 520 0982  
J.A Therapy provides personalised remedial therapy, tutoring, and clinical psychology services, focusing on enhancing learning and mental well-being. Visit [www.jatherapy.co.za](http://www.jatherapy.co.za) or email [info@jatherapy.co.za](mailto:info@jatherapy.co.za)

### OCCUPATIONAL HEALTH PRACTITIONER

**Occupational Health Medical Screening (Red tickets) and Travel Clinic** 082 862 7892  
Address: 181 Bekker Road, Vorna Valley, Midrand. Booking is essential: [midrandkohc@krielhealthcentre.co.za](mailto:midrandkohc@krielhealthcentre.co.za)

### OPTOMETRIST

**Specsavers for affordable eye care, contact our experienced team.**  
**Mall of Africa** 010 612 6440  
Optometrists Marliez Joubert and Monica Naicker  
Book online: [www.Specsavers.co.za](http://www.Specsavers.co.za)

## GENERAL SERVICES

### BABY AND CHILD CARE

**Call Sarah Austin** 071 135 9996  
Available in the Waterfall City area. Sarah has 15 years' experience in baby and child care and she has recently moved to Waterfall City. She is available on a full-time/part-time/ad hoc basis. References/CV available.

### CATERING

**Chef Neo**  
A bespoke catering and private chef service. Dinner parties, high teas and delectable buffets in the comfort of your own home. Visit [www.platedbychefneo.com](http://www.platedbychefneo.com) to book.

### CLEANERS

**Crisp and Clean** 083 378 3331  
Door-to-door, taking the hassle out of cleaning laundry, dry cleaning, upholstery and carpet cleaning.

### COMPUTERS

**Matrix Warehouse** 011 466 0434  
We offer a wide variety of products and services including new PCs, notebooks, tablets, printers, networking products, all PC/NB related cables and accessories. We also offer repairs on all PCs and NBs, both software and hardware problems. [kyalami@matrixwarehouse.co.za](mailto:kyalami@matrixwarehouse.co.za)

### DELIVERY SERVICE

**Mr Delivery Midrand** 011 315 2926

### HOME CLEANING SERVICE

**Clean My Bed Jonathan Akal** 069 797 6370  
Clean My Bed is a medical grade, deep clean sanitising service that removes dust mites and pet dander to help with allergies. Email: [jonathana@cleanmybed.com](mailto:jonathana@cleanmybed.com) or visit: [www.cleanmybed.com](http://www.cleanmybed.com)

### Clean My Space ZA

076 251 2263  
We are a Domestic Cleaning Service offering peace of mind to homeowners. We exist to ensure that household chores do not interrupt your already busy calendar. Book us daily, weekly or monthly on our website: [www.cleanmyspaceza.co.za](http://www.cleanmyspaceza.co.za), or WhatsApp 076 251 2263. If you prefer to speak to a human, call us on 076 251 2263. Clean My Space ZA is based in Kyalami and services the Waterfall City and Kyalami areas.

### Pest Control, Cleaning and Hygiene

011 804 3454  
011 675 5956  
With over 46 years of experience in the industry, we specialise in providing solutions tailored to meet the unique needs of both individuals and businesses.

### HYPNOSIS

**22 Steps Lee-Anne** 081 282 0461  
Make positive changes. Gain greater control of your life. I can help you with anxiety and stress, exam stress, fears, weight loss, stop smoking, addictions, emotions/grief, relationship issues or self-confidence.

### PET GROOMING

**Soapy Smooches Mobile Pet Groomers** 061 087 8247  
We come to you! Pamper your pets at home in our fully-equipped pet parlour on wheels. BOOK NOW - [info@soapysmooches.co.za](mailto:info@soapysmooches.co.za)

### PET & HOME SITTERS

**Pet/Home Sitter** 076 035 6908  
Why leave your pets alone and away from home. Leave them in their own loving home. Mature Lady fills the gap. Contact Dee-Jean at [djb160453@yahoo.com](mailto:djb160453@yahoo.com)

### Power Paws Kyalami

076 706 6600  
No time to PAWS? Let us walk your pups! Professional, equipped dog walkers at your service. Contact Carly at [kyalami@powerpaws.co.za](mailto:kyalami@powerpaws.co.za) or enquire on our website [www.powerpaws.co.za](http://www.powerpaws.co.za)

### RESTAURANTS

**Col'Cacchio Waterfall** 010 596 8941  
[waterfall@colcacchio.co.za](mailto:waterfall@colcacchio.co.za)

### SPEECH & LANGUAGE THERAPIST

**Lara Ramos** 082 480 6716  
Specialising in both child and adult disorders. Email: [l.d.amos@hotmail.com](mailto:l.d.amos@hotmail.com)

### TUTORING

**Maxi Brain Tertiary & Secondary Tutor** 079 693 7190  
Economics & management sciences subjects, bridging classes, private & groups.

### TYRES

**Supa Quick** 011 466 6076  
Kyalami Boulevard

## HOME SERVICES, BUILDING & MAINTENANCE, APPLIANCE REPAIRS

### ARCHITECT

**Drawbox Design Studio** 082 339 5834  
The Leader in providing sustainable building solutions. Contact Carlu Swart.

### BUILDING

**Care Construction and Paving** 011 469 4300  
**Ian** 083 250 3736  
We specialise in new houses, additions and alterations, paving, painting and all your building requirements, no matter how big or small. Over 30 years' experience. [www.careconstruction.co.za](http://www.careconstruction.co.za) Email: [ian@careconstruction.co.za](mailto:ian@careconstruction.co.za)

### DRAIN MAINTENANCE

**SirDrain** 011 454 3534 / 083 231 5809  
Call us for professional cleaning and unblocking of drains, using a drain machine or rods.

## ELECTRICIAN

### Affordable Electrician

**Lazarus** 073 127 3921  
Issuing COC's (same day), installation of solar systems and inverters, repairs to faulty plugs, switches, lights, ovens, stoves and geysers, commercial and industrial electrical maintenance and repairs.

### Taylor Electrical

0861 102 174  
083 380 9512  
Domestic, commercial, industrial, compliance certificates, energy saving.

## FLOORING

### Top Carpets and Floors Kramerville

**Jay** 082 498 9894  
**Nontombi** 064 519 4887  
Wall to wall carpets, vinyl, laminates, turf, blinds and rugs. 2nd Floor, 9 Kramer Road. Contact Jay or Nontombi or email: [jay@tcfkramerville.co.za](mailto:jay@tcfkramerville.co.za)

### Turkish Carpet Gallery

071 648 3050  
Shop 065 604 1999  
For classic, modern and abstract carpets, visit us at Kyalami Corner Shopping Centre, Upper Level, Shop 107. Our other services include washing, cleaning and carpet repairs done professionally.

## GARDEN & POOLS SERVICES

### Crewcut Gardens & Pools

**Peter** 082 450 1111  
**Mark** 082 789 7916  
Weekly garden and pool maintenance. We build new pools or remanbelite old ones. Suppliers of all pool spares, including pool pumps. Contact via email: [peter@crewcut.co.za](mailto:peter@crewcut.co.za) or [mark@crewcut.co.za](mailto:mark@crewcut.co.za)

## GAS SUPPLY SERVICES

### Falcon Gas

073 818 3532  
Try our exceptional service for your LPG cylinder, refill/new cylinder supply. We comply to all Estate Safety & Security regulations. Free delivery to your home or business within Waterfall City. Email: [falcogas.sa@etgworld.com](mailto:falcogas.sa@etgworld.com)

## LOCKSMITH

**Brad's Lock and Key** 082 854 9898  
**All locks opened/fitted/replaced** 011 802 4114  
Also doors fitted/motors repaired/security gates custom-made. All work done by myself on-site. websites: [bradslock.co.za](http://bradslock.co.za)/[bradsgates.co.za](http://bradsgates.co.za) email: [bradslock@telkomsa.net](mailto:bradslock@telkomsa.net)

## MAINTENANCE

**Waterfall Maintenance Guy** 082 569 3962  
Have you been neglecting your home maintenance? We are fully operational for garden services to painting, paving, tiling, plumbing etc. Call Udesch for excellent prices, professional service and advice. Email: [udesch@waterfallmg.co.za](mailto:udesch@waterfallmg.co.za), or visit [www.waterfallmg.co.za](http://www.waterfallmg.co.za) for more info.

## PAINT & BUILDING SUPPLIES

**Colour Creations** 011 466 0065  
Paint, hardware, plumbing and building suppliers in Kyalami.

## PLUMBERS

**Plumb-Avid Projects** 012 654 2513  
071 875 0218

The leading name in plumbing and maintenance, now offering municipal water backup and rainwater harvesting solutions.

### Sandton Plumbers

083 460 9870  
Maintenance & Construction experts. Over 36 years' experience. PIRB Registered & Solar Certified Installer.

## PROPERTY MAINTENANCE

**Carl Allan Property Maintenance** 082 740 2356  
Based in Waterfall City. We take care of all your maintenance: steelwork, carpentry, painting and all related repair work. Contact Carl Allan. Email: [capm.renovate@gmail.com](mailto:capm.renovate@gmail.com)



# Waterfall City Contacts

Capacity	Name	Contact Number	Email
CEO - Waterfall Country Estate and Waterfall Village	Kenneth Gaynor	010 591 4671	kenneth@waterfallcountry.co.za
CEO - Waterfall Equestrian Estate	Gerhard du Toit	060 988 1059	gerhard@waterfallequestrian.co.za
Deputy Estate Manager - Waterfall Equestrian Estate	Jason Booysen	066 205 5028	jason@waterfallequestrian.co.za
Estate General Manager - Waterfall Hills Mature Lifestyle Estate	Shae Braithwaite	081 810 0770	shae@whra.co.za
Estate Manager - Waterfall Valley Mature Lifestyle Estate	Eugene van der Merwe	064 958 7091	estatemanager@waterfallvalley.co.za
Estate Manager - The Polofields, Waterfall	Nadia Zelubowski	060 759 1580	estatemanager@polofieldswaterfall.co.za
Estate Manager - Kikuyu, Waterfall	Laurine Kleynhans	068 199 8553	estatemanager1@kikuyuwaterfall.co.za
Estate Manager - Munyaka, Waterfall	Courtney Johnson	066 595 1525	munyakaem@munyakawaterfall.co.za
Estate Manager - Ellipse, Waterfall	Karmen Richards	081 482 7831	estatemanager@waterfallellipse.co.za
Property Manager - Waterfall View	Anita Granger	071 595 8167	anita@elgaru.co.za
Security Manager	Shawn Benningfield	076 144 8197	shawn@waterfall.co.za
Sustainability Manager	Ruan Spies	060 966 4211	ruan@waterfall.co.za
Attacq Leasing	Justin Smith Lunga Sikutshwa	082 362 0800 083 200 2576	justin@attacq.co.za lunga@attacq.co.za



## emergency numbers

### DEDICATED WATERFALL CITY SERVICES

Fire Ops Waterfall City	083 622 6026
Netcare 911 Emergency Medical Services Waterfall City	010 209 8365

### PETS & ANIMAL RESCUE

Animals in Distress	011 466 0261
Midrand Veterinary Hospital	011 315 1575
SPCA	011 265 9935
SPCA Midrand Emergency	083 441 1564
Sunninghill Village Vet	011 803 1221

### OTHER SERVICES

Ambulance/Fire	10177
Ambulance/Fire/Metro Police	011 375 5911
Ambulance/Fire Midrand	011 847 4600
Carstenhof Clinic	011 655 5500
Crime Stop	086 001 0111
Midrand Trauma Support	076 979 9017
Netcare Emergency/Ambulance	082 911
Netcare Sunninghill Hospital	011 806 1500
Netcare Waterfall City Hospital	011 304 6600
Police/Flying Squad	10111
Police Midrand	011 347 1600



# Waterfall City Resale Agent Panel

## WATERFALL COUNTRY AND COUNTRY VILLAGE ESTATES

### BYRON THOMAS PROPERTIES

Megan O'Donovan  
megan@btproperties.co.za  
072 969 2428

### CHAS EVERITT MIDRAND

Phiwe Myeza  
phiwe@everitt.co.za  
082 710 3463

### CHAS EVERITT SANDTON

Angelique van der Merwe  
angelique.vdm@everitt.co.za  
072 528 8130  
Angelique Wannenber  
angelique.s@everitt.co.za  
083 611 6298  
Gary Berkowitz  
garyb@everitt.co.za  
061 540 3265

### DARLING LANDLORDS PROPERTY GROUP

Dylan Coffen  
dylan@darlinglandlords.co.za  
079 742 6197  
Wyde Benn  
wyde@darlinglandlords.co.za  
079 075 1192

### EAGLE DWELL PROPERTIES

Niran Adenigba  
niran@eagledwell.co.za  
078 443 1931

### EXP REALTY

Deidre Bruintjies  
deidre.bruintjies@expsouthafrica.co.za  
081 889 2458  
Kym Clephane  
kym.clephane@expsouthafrica.co.za  
076 024 3862  
Martin Gunn  
martin.gunn@expsouthafrica.co.za  
082 925 3339  
Connie Peter  
connie.peter@expsouthafrica.co.za  
082 496 5827

### F.G. LATTO

Fraser Gourlay  
fraser@fglatto.co.za  
072 767 7489  
Noksie Gourlay  
noksie@fglatto.co.za  
078 332 6111  
Susan Kruger  
susan@fglatto.co.za  
072 956 8311

### FINE AND COUNTRY MIDRAND

Ikram Gabr  
ikram@gsapp.co.za  
082 228 7993  
Tanya Mohr  
tanya@gsapp.co.za  
083 276 3004

### GLOBAL EXCLUSIVE PROPERTIES

Fungai Ngehama  
fungai@globalexclusive.co.za  
072 860 4499

### HARPROP REAL ESTATE

Irmi Reif  
irmi@harprop.co.za  
082 905 1213

### JAWITZ PROPERTIES (TURNKEY)

Belinda Hickson  
belindah@jawitz.co.za  
082 835 0099  
Cathie Bester  
cathieb@jawitz.co.za  
083 616 0348  
Sue de Klerk  
sued@jawitz.co.za  
083 676 6012

### KENT GUSH PROPERTIES

Nicky Makhathini  
nicky@kentgush.co.za  
073 832 0219

### LUXLIV PROPERTY GROUP

Marussia van der Merwe  
marussia@luxlivproperty.com  
083 384 0618  
Joelle McMaster  
joelle@luxlivproperty.com  
084 020 1111

### LWP PROPERTIES

Alma Brown  
alma@lwp.co.za  
083 947 2726  
Brian Anthony Hickson  
brianh@lwp.co.za  
083 405 0000

### MANDATED PROPERTY GROUP

Pam Bingo  
pam@mandated.co.za  
079 216 7800

### NTSIKIE MGAYIYA REAL ESTATE

Ntsikie Mgaya  
ntsikie.mgaya@nmrealestate.co.za  
079 101 0921

### PLATINUM RESIDENTIAL

Andrew Pearse  
andrew@platinum.co.za  
083 652 8888  
Annalize Morris  
annalize@platinum.co.za  
082 347 7305  
Melanie Pearse  
melanie@platinum.co.za  
083 390 0000  
Graeme Bunyard (Vacant Land)  
graeme@platinum.co.za  
082 882 5861

### SOTHEBYS REALTY

Tina de Waal  
tinad@sothebysrealty.co.za  
083 771 8709

### SPECTRUM REALTY

Nandipha Ngcobo  
nandipha@spectrumrealty.co.za  
071 482 1683

### TYSON PROPERTIES

Nastasja Peters  
tash@tysonprop.co.za  
063 185 4020

### KIKUYU

### AMALGA REAL ESTATE

Maureen Babane  
maureen@amalgarealestates.co.za  
079 842 5104

### CHAS EVERITT SANDTON

Angelique van der Merwe  
angelique.vdm@everitt.co.za  
072 528 8130  
Babalwa Yakopi  
babalwa@everitt.co.za  
079 177 8513  
Lulama Konza  
lulama.konza@everitt.co.za  
064 515 6126

### DARLING LANDLORDS PROPERTY GROUP

Dylan Coffen  
dylan@darlinglandlords.co.za  
079 742 6197  
Wyde Benn  
wyde@darlinglandlords.co.za  
079 075 1192

### EAGLE DWELL PROPERTIES

Niran Adenigba  
niran@eagledwell.co.za  
078 443 1931

### EXP REALTY

Deidre Bruintjies  
deidre.bruintjies@expsouthafrica.co.za  
081 889 2458  
Martin Gunn  
martin.gunn@expsouthafrica.co.za  
082 925 3339

### HARPROP REAL ESTATE

Irmi Reif  
irmi@harprop.co.za  
082 905 1213

### JAWITZ PROPERTIES (TURNKEY)

Belinda Hickson  
belindah@jawitz.co.za  
082 835 0099  
Cathie Bester  
cathieb@jawitz.co.za  
083 616 0348  
Gene Witepski  
genew@jawitz.co.za  
082 455 5210

### KENT GUSH PROPERTIES

Elisha Paul  
elisha@kentgush.co.za  
076 498 0137

### LUXLIV PROPERTY GROUP

Marussia van der Merwe  
marussia@luxlivproperty.com  
083 384 0618  
Joelle McMaster  
joelle@luxlivproperty.com  
084 020 1111  
Victoria Zwane  
victoria@luxlivproperty.com  
061 690 1170

### LWP PROPERTIES

Alma Brown  
alma@lwp.co.za  
083 947 2726  
Brian Anthony Hickson  
brianh@lwp.co.za  
083 405 0000

### MANDATED PROPERTY GROUP

Pam Bingo  
pam@mandated.co.za  
079 216 7800

### NTSIKIE MGAYIYA REAL ESTATE

Ntsikie Mgaya  
ntsikie.mgaya@nmrealestate.co.za  
079 101 0921

### O-YES PROPERTIES

Nalini Bageloo  
nalini@o-yes.co.za  
083 287 5624

### REMAX MASTERS

Victoria Serfontein  
victoria@remax-masters.co.za  
076 481 5171

### SA NATIONAL REALTORS GROUP

Belinda Livingstone  
belinda.livingstone@sanrg.co.za  
083 463 8362

### TYSON PROPERTIES

Nastasja Peters  
tash@tysonprop.co.za  
063 185 4020

### MUNYAKA

### CHAS EVERITT SANDTON

Angelique van der Merwe  
angelique.vdm@everitt.co.za  
072 528 8130  
Robert Jones  
robert.j@everitt.co.za  
071 906 0930  
Karolina Basinka  
karolina.f@everitt.co.za  
076 585 3341

### DARLING LANDLORDS PROPERTY GROUP

Dylan Coffen  
dylan@darlinglandlords.co.za  
079 742 6197  
Wyde Benn  
wyde@darlinglandlords.co.za  
079 075 1192

### EAGLE DWELL PROPERTIES

Niran Adenigba  
niran@eagledwell.co.za  
078 443 1931

### EXP REALTY

Deidre Bruintjies  
deidre.bruintjies@expsouthafrica.co.za  
081 889 2458  
Martin Gunn  
martin.gunn@expsouthafrica.co.za  
082 925 3339

### HARPROP REAL ESTATE

Irmi Reif  
irmi@harprop.co.za  
082 905 1213

### HENRENE PROPERTIES

Irene Petronella Minnaar  
irene@henrene.co.za  
082 772 5715

### JAWITZ PROPERTIES (TURNKEY)

Belinda Hickson  
belindah@jawitz.co.za  
082 835 0099  
Cathie Bester  
cathieb@jawitz.co.za  
083 616 0348  
Gene Witepski  
genew@jawitz.co.za  
082 455 5210

### KENT GUSH PROPERTIES

Elisha Paul  
elisha@kentgush.co.za  
076 498 0137

### LUXLIV PROPERTY GROUP

Marussia van der Merwe  
marussia@luxlivproperty.com  
083 384 0618  
Joelle McMaster  
joelle@luxlivproperty.com  
084 020 1111  
Victoria Zwane  
victoria@luxlivproperty.com  
061 690 1170

### LWP PROPERTIES

Alma Brown  
alma@lwp.co.za  
083 947 2726  
Brian Anthony Hickson  
brianh@lwp.co.za  
083 405 0000

### ONLY REALTY GROUP

Soeraya Williams  
soeraya.w@orgroup.co.za  
082 708 9749

### SUFEMI PROPERTIES

Chantelle Mhlanga  
chantelle@sufemiproperties.co.za  
079 109 0318

### TYSON PROPERTIES

Nastasja Peters  
tash@tysonprop.co.za  
063 185 4020

### THE POLOFIELDS

### CHAS EVERITT MIDRAND

Phiwe Myeza  
phiwe@everitt.co.za  
082 710 3463



**CHAS EVERITT SANDTON**

Angelique van der Merwe  
angelique.vdm@everitt.co.za  
072 528 8130  
Babalwa Yakopi  
babalwa@everitt.co.za  
079 177 8513  
Lulama Konza  
lulama.konza@everitt.co.za  
064 515 6126

**DARLING LANDLORDS PROPERTY GROUP**

Dylan Coffen  
dylan@darlinglandlords.co.za  
079 742 6197  
Wyde Benn  
wyde@darlinglandlords.co.za  
079 075 1192

**EAGLE DWELL PROPERTIES**

Niran Adenigba  
niran@eagledwell.co.za  
078 443 1931

**EXP REALTY**

Deidre Bruintjies  
deidre.bruintjies@expsouthafrica.co.za  
081 889 2458  
Martin Gunn  
martin.gunn@expsouthafrica.co.za  
082 925 3339

**GLOBAL EXCLUSIVE PROPERTIES**

Fungai Ngehama  
fungai@globalexclusive.co.za  
072 860 4499

**HARPROP REAL ESTATE**

Irmi Reif  
irmi@harprop.co.za  
082 905 1213

**JAWITZ PROPERTIES (TURNKEY)**

Belinda Hickson  
belindah@jawitz.co.za  
082 835 0099  
Cathie Bester  
cathieb@jawitz.co.za  
083 616 0348  
Sabine Warren  
sabinew@jawitz.co.za  
082 344 7405

**KENT GUSH PROPERTIES**

Elisha Paul  
elisha@kentgush.co.za  
076 498 0137

**LUXLIV PROPERTY GROUP**

Marussia van der Merwe  
marussia@luxlivproperty.com  
083 384 0618  
Joelle McMaster  
joelle@luxlivproperty.com  
084 020 1111  
Victoria Zwane  
victoria@luxlivproperty.com  
061 690 1170

**LWP PROPERTIES**

Alma Brown  
alma@lwp.co.za  
083 947 2726  
Brian Anthony Hickson  
brianh@lwp.co.za  
083 405 0000

**MANDATED PROPERTY GROUP**

Pam Bingo  
pam@mandated.co.za  
079 216 7800

**NTSIKIE MGAYIYA REAL ESTATE**

Ntsikie Mgaya  
ntsikie.mgaya@nmrealestate.co.za  
079 101 0921

**O-YES PROPERTIES**

Nalini Bageloo  
nalini@o-yes.co.za  
083 287 5624

**REMAX ONE HUNDRED**

Jennifer Ramsay  
jennyramsay@remax-onehundred.co.za  
082 880 6221

**SA NATIONAL REALTORS GROUP**

Erika de Groot  
erika.degroot@sanrg.co.za  
082 743 3180  
Belinda Livingstone  
belinda.livingstone@sanrg.co.za  
083 463 8362

**SUFEMI PROPERTIES**

Chantelle Mhlanga  
chantelle@sufemiproperties.co.za  
079 109 0318

**TYSON PROPERTIES**

Nastasja Peters  
tash@tysonprop.co.za  
063 185 4020

**WE TRADE PROPERTY**

Wendy van Heerden  
wendyvh@wetradeproperty.co.za  
083 443 2231

**ELLIPSE TOWERS**
**CHAS EVERITT SANDTON**

Angelique van der Merwe  
angelique.vdm@everitt.co.za  
072 528 8130  
Robert Jones  
robert.j@everitt.co.za  
071 906 0930  
Karolina Basinka  
karolina.f@everitt.co.za  
076 585 3341

**DARLING LANDLORDS PROPERTY GROUP**

Dylan Coffen  
dylan@darlinglandlords.co.za  
079 742 6197  
Wyde Benn  
wyde@darlinglandlords.co.za  
079 075 1192

**EAGLE DWELL PROPERTIES**

Niran Adenigba  
niran@eagledwell.co.za  
078 443 1931

**EXP REALTY**

Deidre Bruintjies  
deidre.bruintjies@expsouthafrica.co.za  
081 889 2458  
Martin Gunn  
martin.gunn@expsouthafrica.co.za  
082 925 3339

**F.G. LATTO**

Fraser Gourlay  
fraser@fglatto.co.za  
072 767 7489  
Noksie Gourlay  
noksie@fglatto.co.za  
078 332 6111  
Susan Kruger  
susan@fglatto.co.za  
072 956 8311

**HARPROP REAL ESTATE**

Irmi Reif  
irmi@harprop.co.za  
082 905 1213

**JAWITZ PROPERTIES (TURNKEY)**

Belinda Hickson  
belindah@jawitz.co.za  
082 835 0099  
Cathie Bester  
cathieb@jawitz.co.za  
083 616 0348

**KENT GUSH PROPERTIES**

Nicky Makhathini  
nicky@kentgush.co.za  
073 832 0219

**LUXLIV PROPERTY GROUP**

Marussia van der Merwe  
marussia@luxlivproperty.com  
083 384 0618  
Joelle McMaster  
joelle@luxlivproperty.com  
084 020 1111  
Victoria Zwane  
victoria@luxlivproperty.com  
061 690 1170

**LWP PROPERTIES**

Alma Brown  
alma@lwp.co.za  
083 947 2726  
Brian Anthony Hickson  
brianh@lwp.co.za  
083 405 0000

**NTSIKIE MGAYIYA REAL ESTATE**

Ntsikie Mgaya  
ntsikie.mgaya@nmrealestate.co.za  
079 101 0921

**TYSON PROPERTIES**

Nastasja Peters  
tash@tysonprop.co.za  
063 185 4020

**WATERFALL VIEW**
**DARLING LANDLORDS PROPERTY GROUP**

Dylan Coffen  
dylan@darlinglandlords.co.za  
079 742 6197  
Wyde Benn  
wyde@darlinglandlords.co.za  
079 075 1192

**EXP REALTY**

Deidre Bruintjies  
deidre.bruintjies@expsouthafrica.co.za  
081 889 2458  
Martin Gunn  
martin.gunn@expsouthafrica.co.za  
082 925 3339

**JUST PROPERTY HERITAGE**

Ally Mafela Ndou  
allyn@just.property  
076 048 2657

**NTSIKIE MGAYIYA REAL ESTATE**

Ntsikie Mgaya  
ntsikie.mgaya@nmrealestate.co.za  
079 101 0921

**REMAX CAPITAL**

Amanda Katergerakis  
amanda@remaxcapital.co.za  
082 376 9473

**TYSON PROPERTIES**

Nastasja Peters  
tash@tysonprop.co.za  
063 185 4020



An updated list is also available on the Waterfall City Website and Community Portal.  
For any queries, contact: [agents@waterfall.co.za](mailto:agents@waterfall.co.za)



REMEMBER TO SUPPORT YOUR LOCAL RESTAURANTS WHEN YOU FEEL LIKE A NIGHT OUT!

# APRIL RESTAURANT COMPETITION

for our Waterfall City residents

The question for this month's competition:  
**Which pink-flowered invasive plant species is the most problematic across Gauteng during summer?**

Please email your answer along with your full name, your cell number, your residential development name and your stand or apartment number, detailing 'Waterfall City Restaurant Competition' in the subject line, to: [competitions@eiapublishing.co.za](mailto:competitions@eiapublishing.co.za). The winner will receive a R500 meal voucher from one of our participating restaurants.

## Terms and Conditions:

1. Vouchers cannot be exchanged for cash.
2. Portions of the monetary value of the voucher cannot be refunded as "change".
3. Bookings need to be made in advance with the restaurant detailed on the voucher.
4. Service charges/gratuities are not included, regardless of any balance left over after the meal.
5. Vouchers will be numbered. Please provide your voucher number when you make your reservation.
6. The competition is open to all Waterfall City residents over the age of 18.
7. Indemnity: The publishers, Waterfall City and any other associated parties are not responsible for the fulfilment of the service from the restaurant once the prize has been awarded.
8. The winner will be notified by email.



PHOTO BY SHOURAV SHERKH ON UNSPASH

**CONGRATULATIONS TO: Ben Kashala, our March winner of a R500 voucher.**



Where every  
Bite is a  
Masterpiece




*Istanbul Kebab Melrose Arch*  
010 023 2700  
Shop 5, The Arch, Melrose  
Square, The High St. Melrose,  
Johannesburg, 2076

*Istanbul Kebab Sunninghill*  
011 051 4781  
Village Shopping Centre,  
97 Edison Cres. Sunninghill,  
Johannesburg, 2191

<https://istanbulkebab.co.za/>



**MIOSSO**  
SAVOUR TURKISH LUXURY

For More Information :  010-634-5777  70 Rivonia Rd, Sandhurst





**BobSure**  
PET INSURANCE

# Devoted to holistic pet wellness

For over 130 years, you've trusted us with their food, wellness, and hygiene – now you can trust us with their health insurance, too.



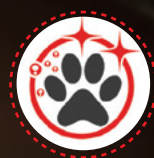
Exclusive discounts on  
Bob Martin products\*



No annual limits on our  
Comprehensive Plan



Get coverage for older  
pets with our Smart Plan



Sign up for our  
lifestyle benefits\*

visit  
**www.bobsure.co.za**



Helping pets live longer since 1892.

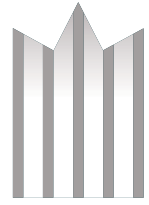


\*Discounts and lifestyle benefits are exclusive to our Comprehensive Plan and optional to our Smart Plan policyholders. Lifestyle benefits include a "vet in your pocket" via the TAME App and R1000 per year to spend on health checks, vaccinations, products or training. All prices include VAT. Terms and Conditions apply.



Pet Underwriting Managing Agency – An Authorised Financial Services Provider (FSP No. 44387)  
Insurer: Renasa Insurance Company Ltd – Reg. No. 1998/000916/06 – Authorised Non-Life Financial Services Provider (FSP No. 15491)  
Swift Underwriting Managers is a registered FSP (FSP No. 49285)





**TYSON**  
PROPERTIES

**A PROPERTY  
SEARCH CAN  
ONLY TAKE  
YOU SO FAR,**

but we will  
take you **home.**

**Grab our special offer  
at JUST 2.5% + VAT!**

***LET'S TALK  
WATERFALL CITY***

**Nastasjia Peters**

063 185 4020   
tash@tysonprop.co.za 