



**WATERFALL
CITY**

ISSUE 6 | 2025



WINTER FUN FOR KIDS IN THE CITY

Waterfall City
hosts American
students

Meet top SA blind golfer,
Charlene Pienaar

Deloitte's annual
river clean-up

JOIN THE REFILLUTION!



**FIRST COME
FIRST SERVED!**

A WATERFALL CITY EXCLUSIVE!

**NEXT-GEN 'ECO' POOL SERVICE
LIKE YOU'VE NEVER SEEN BEFORE!
(...not even a little bit!)**

Let us service your Pool for **R1300** pm and
we'll REFILL premium quality household consumables.



1.5L



1.5L



Heavy Duty (20)



2-ply (18)

**R5000
PET ACCIDENT
BENEFIT
R2660
FUNERAL**

**R100
AIRTIME
VOUCHER**

**All Purpose Cleaner
(1.5L)**

**Dish Washing Liquid
(1.5L)**

**Heavy Duty Refuse
Bags (20)**

2-ply Toilet Roll (18)



**QUALITY PLEDGE: All our products
carry a money back quality guarantee.**

REFILLUTION™
a division of
**PET & Pool
Home**
061-552 1364

Contents

NEWS

- 2** Welcome
- 5** Winter fun in Waterfall City
- 8** Blind faith: Excelling beyond beliefs
- 11** Muddy boots, cleaner water: Deloitte's annual Jukskei River clean-up
- 15** Waterfall City's global appeal
- 18** Mall of Africa: Building dreams
- 47** Waterfall City Contacts

LIFESTYLE

- 23** New in the Hood
- 25** Must Do
- 45** Winter warmer recipe
- 52** Restaurant Competition for Waterfall City Residents

HEALTH

- 30** Netcare: Boosting school attendance one pair of school shoes at a time

FINANCE

- 32** PSG Wealth: Achieving financial freedom is a journey, not a sprint

TRAVEL

- 36** A dreamy escape to Angels View Hotel

HOME FRONT

- 40** Latest Décor Trends: Coffee Bars, Storage and Shelving
- 46** Waterfall City Home Service Providers and Classifieds
- 48** Waterfall City Resale Agent Panel

The Waterfall City Magazine is published by Estates in Africa (Pty) Ltd trading as EIA Publishing on behalf of Waterfall City and in association with Waterfall City Management Company. The opinions expressed are not necessarily those of the Waterfall City Management Company, Waterfall City, the publisher, nor of the companies themselves.

ESTATES IN AFRICA (PTY) LTD HEAD OFFICE: 32 Fricker Road, Illovo, Johannesburg. www.eiapublishing.co.za

Publisher: Nico Maritz, nicom@nowmedia.co.za
Editor: Nicole Hermanson, nicole@eiapublishing.co.za
Marketing Manager: Martin Fourie 072 835 8405, martin@eiapublishing.co.za
Production Co-ordination: Chris Grant, chrisg@eiapublishing.co.za
Design: Diane van Noort, d2vn@mweb.co.za

Welcome!

With the school holidays fast approaching, parents will be delighted to know that Waterfall City has a ton of Winter Fun activities to keep kids occupied. Our cover article features a reminder of some of the exciting indoor and outdoor options, including BOUNCE with its various adventure challenges, some great animation movies coming to Ster-Kinekor, Kyalami Indoor Karting, sports like soccer and golf, as well as a cool crafting spot for those with an artistic flair. Check it out and start planning your holiday schedules now.

Our Must Do pages will also add some extra ideas for pre- and post-school holidays, including Father's Day special offers and news about the 2025 Waterfall City Half Marathon.

Such entertainment variety helps to make Waterfall City a world-class lifestyle destination, and now we're also becoming an international case study for smart cities. We were recently visited by 12 students from the US, hosted by the African Centre for the Study of the United States at Wits University. It wasn't the typical sightseeing tour, as you can read inside.

An inspiring read is our story about Charlene Pienaar, a champion golfer despite having only 5% vision. After becoming the first female disabled world champion with her B3 Division victory in the 2023 ISPS Handa IBGA World Blind Championships at Milnerton Golf Club, Charlene played in the South African Disabled Golf Association (SADGA) Provincial Challenge in February this year, proving that a disability doesn't have to end your dreams. With support from Waterfall City Management Company, she also had the opportunity to compete in the G4D Open in Woburn in the UK in May, where she came first in her division.

We have also been highly motivated by Deloitte's annual Jukskei River clean-up event, where 100 employees from Deloitte's head office in Waterfall City dedicated their yearly Volunteer Day to cleaning the river. They collected a staggering 222 bags of rubbish while also removing some invasive alien plants from the riverbank.

Another great initiative saw Mall of Africa donate a new assembly area to Dr Mathole Motshekga Primary School in Midrand, using funds raised by its festive gift-wrapping station last December. Working with the Attacq Foundation and Gift of the Givers, Mall of Africa built a new, sheltered assembly area with extra money going to the school's feeding scheme. Most of the 2,400 learners come from low-income households, making the feeding scheme essential. In other news from Mall of Africa, our New in the Hood feature takes a look at Lacoste's brand-new flagship store – the first and only Lacoste flagship of its kind on South African soil – and it is in our mall!

Looking at our regular contributors, schools are also the focus of this month's column from Netcare, which highlights the My Walk Made with Soul initiative that has given school shoes to nearly 300,000 children over the past five years. Netcare works with Adcock Ingram Critical Care to convert PVC from uncontaminated healthcare waste into shoes, helping more kids attend school and reducing the waste dumped in landfill sites.

Finally, our PSG Wealth piece is a reminder that achieving financial freedom is a long-term journey that can quickly be derailed by get-rich-quick trends and speculative investments.

Until next time,
Waterfall City Management

PREFER A DIGITAL COPY? If you are a Waterfall City resident currently receiving a printed copy of this magazine but would prefer to instead download it electronically from the Community Portal or Waterfall City website, please email customercare@waterfallcity.co.za with your name and full address, including your estate name and stand number or building name/block number and apartment number, so we can update the distribution list accordingly.

UNVEILING OF THE STUNNING NEW DESIGN **AT THE POLOFIELDS**



A haven in the heart of Waterfall City, just north of Sandton,
The Polofields is part of Balwin's Signature Collection.

3 bedroom, 2 bathroom From R 2,799,900

Prosper
 **073 876 2017**

Balwin
PROPERTIES®

Clearly the best way to view your world.



SF20 frameless patio enclosure system

Tel: 010 143 7655
www.sunflex.co.za

SUNFLEX 

WINTER FUN IN WATERFALL CITY

Keeping the kids entertained this holiday season

Between homework, extramural activities, and the daily school routine, we know that it has been a busy first half of the school year, and so it's no surprise that the mid-year winter holidays approaching will be a welcomed break for kids and parents alike.

What better place to unwind and have some fun than in Waterfall City? While our estates themselves offer a treasure trove of exciting activities

from nature walks and fishing, to cycling and playgrounds, residents and visitors to Waterfall City can also enjoy a variety of indoor and outdoor adventures in and around the wider City. And these

will make the school holidays one for the memory books!

So, get your diaries out and start planning your winter holiday activity calendar today!

PLAY INDOORS

BOUNCE

If your kids have some extra energy with all the holiday excitement and buzz, bounce them over to South Africa's premier indoor trampoline park located in Mall of Africa. BOUNCE boasts exciting attractions like the High Ropes Course and X-Run – an awesome head-to-head adventure challenge course



combining features from the BOUNCE X-Park in a side-by-side format. It allows you to race your friends, race yourself or just navigate with more skill each time you run the course.

There's also a miniBOUNCE zone equipped with a two-level play structure, dual-lane slide, ball pit, mini challenge course, and round mini trampolines. Plus, a dedicated Toddler Zone designed with sensory walls and interactive play elements, ensuring fun for the entire family.

Pssst! We've heard that BOUNCE is the best thing to do in Joburg!

011 517 2500

Movie magic

Who doesn't love a good movie on the big screen? And what a great way to keep the kids entertained for a few hours in cooler weather. Ster-Kinekor Mall of Africa has the latest box office hits showing across nine state-of-the-art cinemas. New animation releases in June include *ELIO* and *Jungle Beat 2 (The Past)*. Your kids can also enjoy a throwback holiday movie, *Shrek 2*.

Movies are just better on the big screen with real movie popcorn. You know it's true.

086 166 8437



Feel the rush

If your teenagers (12 and up) are car enthusiasts or just have the need for speed, take them for an outing to Kyalami Indoor Karting. Developed by professional racing drivers, it's the most exciting go-karting track in Gauteng. Affordable and adrenaline-packed for kids and adults, it has all the makings of a fun day on wheels!

076 212 2209

Get crafty

If the weather isn't playing nice, or if you have creative kids who enjoy anything craft-related, pop into *Create Shop Play* in Waterfall Wilds. It is a one-stop arts and crafts centre offering ceramic painting, mosaicking, canvas painting and more cool activities for all ages. This artistic oasis has space for up to 40 people, making it a great spot for holiday play dates or birthday parties.

010 745 3512



VENTURE OUTSIDE



Discovery Soccer Park

Footy fans! Head to Discovery Soccer Park on the roof of Mall of Africa and kick off the best five-a-side soccer experience on a state-of-the-art pitch built on FIFA's highest-rated Astroturf. Whether it's a casual game, a competitive league, teambuilding or a kids' party, get playing.

011 447 1198

World of Golf

Did you know that the biggest golf practice facility in the southern hemisphere is located right here in Waterfall City? If golf is something your kids love, then consider stopping by World of Golf for a few hours to allow them to work on their swing! It boasts a mashie course designed by Gary Player, along with 12 different practice areas and 190 hitting bays. It also has a fitness centre, Nike retail outlet, spa, kiddies play area, and family restaurant, making for a great day out.

011 545 8600



Family fun in the warm winter sun

The Fun Park at Mall of Africa brings dreams to life with rides the whole family can enjoy. From Teacups and the Mini Wheel for the little ones, to the Crazy Wave and the Break Dancer for the older and more adventurous kids. Plus, the Giant Wheel offers a chance for the whole family to get a bird's-eye view of Waterfall City. Great for selfies! This is a ticket to ultimate fun!

Open daily from 10:00 to 20:00, weather permitting



Dancing Shongololo

For those with younger kids, take them to wriggle, giggle, run, climb, hang, explore, jump and have fun in Mall of Africa's Dancing Shongololo. This play area, just off the mall's Town Square, has all sorts of fun activities for young visitors to enjoy, including monkey bars, balancing logs and a winding crawling tube. The play area is suitable for little explorers aged six to 13, and is filled with rhythm, flow and motion.

Nostimo play area

If you prefer watching your kids play while enjoying a fantastic meal, then consider a firm favourite in Waterfall Wilds, the Greek restaurant, Nostimo by Mythos. Enjoy the incredible view and some fabulous Greek fare as you watch your little ones frolic in the awesome play area, which is a kids' haven designed just for them!

011 517 2349



Wishing all our families a great winter holiday season ahead. May it be a fun and adventurous time with us, while you also get some good rest to prepare to take on the rest of 2025!

BLIND FAITH

Excelling beyond beliefs

Charlene Pienaar isn't just making history; she's igniting hope. Her appearance at the South African Disabled Golf Association (SADGA) Provincial Challenge in February was a powerful statement aimed squarely at the next generation of female golfers with disabilities. By becoming the first woman to represent Team North, Charlene etched her name in the record books and, more importantly, sent a resounding message: disability is not a barrier to pursuing your dreams.

"I want to show other young women that they can continue their lives despite their disability," Charlene passionately explains. "They shouldn't let anything be a stumbling block."

Charlene's words resonate deeply

because they are forged in her own experiences. Before her 21st birthday, a car accident dramatically altered her life, leaving her with only five percent vision.

She vividly recalls the frustration of multiple specialist appointments and the devastating moment a doctor delivered the life-altering news. For Charlene, the immediate challenge was the loss of independence she had once taken for granted.

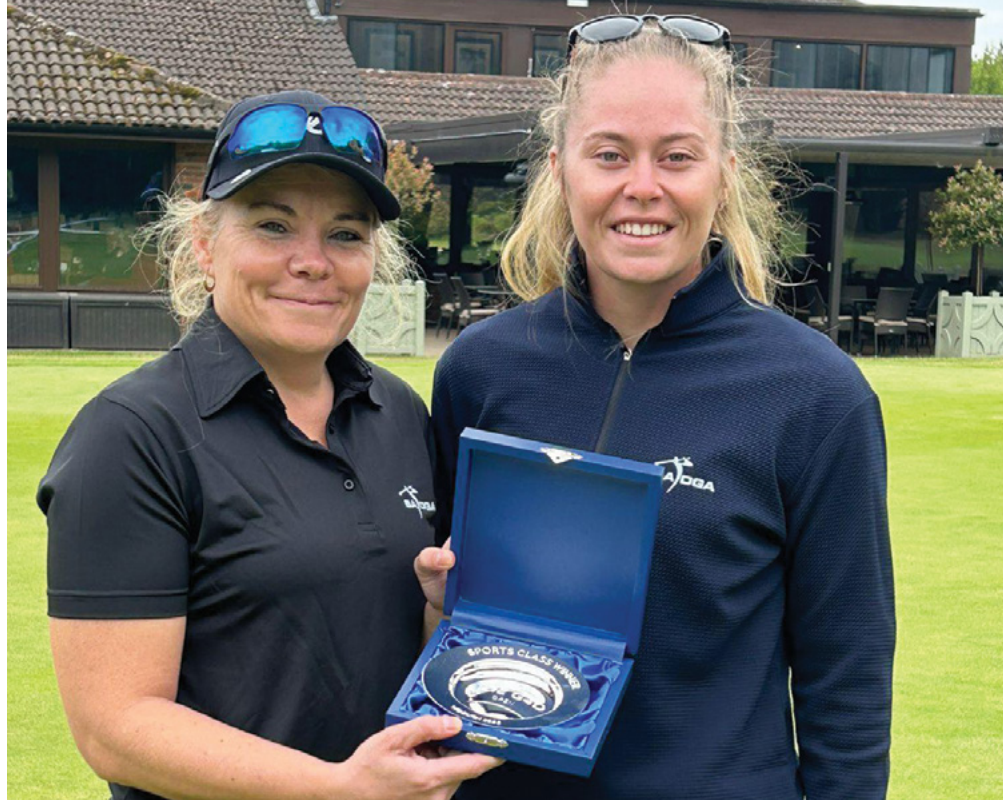
"It was difficult because I was used to being independent, and suddenly, I had to rely on others," she admits honestly. "It's a struggle to see, and I had to adapt by using magnifying glasses and a special enlarging software on my laptop."

Despite these profound adjustments,

Charlene's spirit remained unbroken. Three years after the accident, she returned to her studies and completed her BCom marketing degree, a testament to her unwavering determination. "Sometimes stuff happens in your life," she reflects, "but at the end of the day, God gives you the strength to carry on, to persevere and to push through."

Having been active in hockey and karate during her school years, Charlene initially believed her sporting pursuits had ended. However, 16 years after the accident, her parents stumbled upon a news segment featuring blind individuals playing golf, sparking an idea that would change Charlene's life.

For blind golfers like Charlene, the game presents unique challenges. Unlike their physically abled counterparts, they rely



Charlene with her coach, Lize-Mari Prinsloo, proudly showcasing her Sports Class Winner trophy at The G4D Open.



Getting some putting practice in.



Charlene and Lize-Mari are all smiles as they enjoyed a few days of golf in the UK.



heavily on their caddies, who become their eyes on the course.

"Any visually impaired golfer needs a caddy to assist them to check in which direction to hit the ball and where their ball goes," she explains. "They need to line me up and tell me 'little bit more to the left, little bit more to your right,' and then check where your ball is going. So yes, your caddy is your eyes."

Through dedication and perseverance, Charlene has not only mastered these challenges but has also become a formidable player in both the South African Blind Golf Association and the broader disabled golf community. Today, as a marketing specialist at Absa Bank, she boasts an impressive record of 10 victories in her eight years of playing, including the prestigious

Women's World Champion title.

Charlene is deeply grateful for the opportunities golf has provided, allowing her to represent the disabled community and raise crucial awareness about blindness. She humbly attributes her success in both her career and her sport to "God's grace, her parents' support, and her coach's guidance."

Adding another exciting chapter to her inspiring journey, Charlene has received a sponsorship from Waterfall City Management Company. This sponsorship supported her to travel to the UK to compete in the G4D Open in Woburn in May, an invitation extended by the esteemed Royal & Ancient Golf Club of St Andrews (The R&A). Her trusted PGA Coach, Lize-Marie Prinsloo, served as her caddie.

In her first appearance at this prestigious event, Charlene placed first in her V2 impairment class among the women – and finished 16th overall in the women's division. A week filled with brilliant shots and a fantastic overall experience. "We're incredibly proud to have her as an ambassador for disabled golf in South Africa, and we look forward to what's next in her journey," said a spokesperson for SADGA.

Ultimately, Charlene's message transcends the golf course. "I believe that everyone's unique story can inspire and motivate others. Don't just live life – go out and explore it."

Photos supplied by South African Disabled Golf Association (SADGA): <https://sadga.co.za>



Winter won't slow you down with **LEROY MERLIN'S** exclusive EQUATION range—engineered for reliability, value and affordability. Warm up your workspace with the Workshop Heater, built to tackle chilly garages with robust, even heat. The sleek Tower Fan Heater combines quiet operation with rapid warmth, perfect for home offices or living spaces. Need targeted comfort? The Desk Heater delivers instant cosiness without clutter. Visit us today—because comfort shouldn't cost a fortune!



500W Equation Desk Heater
81495080
R389



3300W Equation Workshop Heater
81484866
R1139





Make your home
the best place to live


Fourways | Greenstone | Boksburg | Little Falls

leroymerlin.co.za

SHOP ONLINE OR INSTORE

 [leroymerlin.southafrica](https://www.facebook.com/leroymerlin.southafrica)

 [leroymerlinsa](https://www.instagram.com/leroymerlinsa)

 [leroymerlinsa1](https://twitter.com/leroymerlinsa1)

NOW OPEN IN CENTURION



Equation Tower Electric Fan Heater
81484859
R779

MUDDY BOOTS, CLEANER WATER

Deloitte's annual Jukskei River clean-up



For the second year running, staff from Deloitte's Waterfall City head office recently stepped out from behind their desks and onto the riverbanks to dedicate their annual Volunteer Day to a critical environmental cause: a clean-up of the Jukskei River near Buccleuch. Facilitated by Waterfall City Management Company (WCMC), this initiative not only tackled visible pollution but also served as a vital learning experience, deeply aligning with Waterfall City's core sustainability principles and fostering a powerful sense of community spirit.

Building on a successful initiative last year, Deloitte returned to this section of the Jukskei with amplified commitment. The operation saw an increase in scale, boasting improved logistics, on-site catering for the dedicated volunteers, and a sharpened focus on both

waste removal and the challenging management of invasive plant species. The turnout was impressive, with around 100 Deloitte employees rolling up their sleeves – from recent graduates to Senior Directors – including the Managing Director, Gregory Rammego, of the Risk Advisory business.

"Seeing first-hand the types of waste that collect in this important water source and hearing directly from various experts in the sustainability field during this clean-up event, provided our staff with an important opportunity to better understand the negative impacts of waste to water bodies, and how invasive species can add to the broader challenge," stated Rovika Poole, Volunteer Day Lead for Deloitte Risk Advisory. "It was also great to step out of the boardroom and into the community, where environmental degradation met human impact head-on."

While the cleanup took place in Buccleuch, on the outskirts of Waterfall City, its significance resonates deeply with the interconnectedness of ecosystems. The effort underscores the crucial need to prevent litter and waste from negatively impacting downstream communities and the broader environment. The Jukskei, like many South African rivers, faces immense pressure from urban waste, illegal dumping, and the unchecked spread of invasive vegetation. This volunteer day, therefore, played a crucial role in public education and awareness, a vital step, even if the root causes require more extensive, long-term solutions involving multiple stakeholders.

Action and efforts

The Deloitte volunteers, armed with gloves and spades, meticulously collected a total of 222 bags of rubbish, ranging from everyday litter to illegally



dumped waste products and silted debris, amounting to 20 cubic metres of waste weighing around two tons, all of which was responsibly removed.

Equally important was the concerted effort to clear a host of alien and invasive plants along the riverbank, where white poplar and giant reeds were by far the most prevalent. These intruders detract from what is already a very degraded system, and their removal and responsible disposal, in partnership with Life Green Group for composting, is a crucial step towards potential future eradication.

The success of the day was amplified by key collaborations. Like last year, Mark McClue, the CEO and co-founder of ARMOUR (Action for Responsible Management of OUR Rivers) provided 'A Voice 4 Water', sharing essential knowledge on river systems, the causes and effects of pollution and their cooperative stance on water remediation being an interface between civil society and the institutions accountable for responsible management of water resources. McClue thanked Plastics SA for their sponsorship of the recycled bags and Deloitte for this opportunity, noting "initiatives like this go beyond the benefits of the one-day volunteering, as the staff can take this awareness and experience into their personal lives and see how their services assist clients in relevant Environment, Social and Governance spaces."



Water quality testing strips.

Kyle Odgers from Kleenhealth gave insight into 'Nanobubbles' as an example of a nature-based approach using technology to address pollution by restoring water resilience. As a demonstration, he undertook water quality tests with the volunteering team, introducing them to iLab field kits. Arranged by ARMOUR from WaterCAN, these kits are designed for non-scientific field operatives to do a basic screening of water quality, to support in illustrating the problem of contaminated water. The results showed high levels of E.Coli, phosphates and chlorine, indicating a result of private sector wastewater running into the storm water system, from for example, pools, washing cars or from leaks within JHB water infrastructure. These results have been uploaded to the regional



Mark McClue, the CEO and co-founder of ARMOUR and Deloitte Managing Director, Gregory Rammego.

database to assist tracking and lobbying to address the issues.

Members of The Alex Water Warriors also joined in the day as part of the community-led programme founded with ARMOUR, to enable a replicable grassroots initiative from Alexandra to provide invaluable local knowledge, as well as enthusiastic on-the-ground experience. As a leading example of awareness and behavioural change in becoming better stewards of how we manage waste as a society, McClue and Mpho from The Alex Water Warriors, explained how there are now over 2,500 water warriors operating three times a week in 15 areas through the river system upstream in Alexandra. This includes a recycling station established as part of processing over 3 million



kilograms of consumable waste towards sustainable change from within the community.

KMB Environmental expertly managed site access, as well as all logistics and preparations for the overall clean-up, while the ever-reliable Phambili Services ensured responsible post-event waste disposal and processing, according to environmental compliance – something that is unfortunately not a regular practice in this polluted river system.

Furthermore, One Juice, a health juice business based in Waterfall City, sponsored delicious juices on the day, which were certainly a hit among the hard-working volunteers. One Juice is also passionate about sustainability and is committed to reducing its

carbon footprint through initiatives like recyclable packaging, sourcing locally to cut down on transport emissions, and minimising waste in the production processes.

For WCMC, facilitating this initiative goes to the heart of its development philosophy. “Waterfall City incorporates sustainable principles as part of our Vision,” explained Ruan Spies, Environmental Manager at WCMC. Spies emphasised the importance of such hands-on initiatives, stating, “Awareness is a good place to start. Without continued action for change and systematic improvement, clean-ups alone will not hold the line. Whilst events like this shine a light on the scale of the larger problem, it also makes it evident that long-term solutions through collective will, policy and persistence are required to effect the change that everyone wants to see and deserves: an environment which is not harmful to our health or well-being. This clean-up event with Deloitte was a great way to provide many people with immediate experience regarding the nature and scale of litter, sewage pollution and invasive plant species in this waterway. We hope it sparks conversations and inspires those who attended to share their learnings with others and to promote sustainable initiatives and ventures aimed at making a lasting impact.”

This direct engagement is fundamental to Waterfall City’s sustainability

cornerstones, which integrate environmental stewardship, community well-being, and education. By supporting events like this, WCMC not only contributes to the immediate betterment of the environment but also fosters a deeper understanding and appreciation for ecological challenges among a wider audience. This practical education on waste, its management, and its impact is invaluable.

A ripple effect

Beyond the visible transformation of the riverbank, the day reignited a shared sense of responsibility and stewardship. For many Deloitte volunteers, it was an opportunity to connect with nature, grasp the scale of environmental issues first-hand, and actively contribute to cleaning up this water source. This aligns perfectly with Deloitte’s global World-Class initiative #PurposeBeyondProfit to make an impact that matters, which aims to empower 100 million lives through education and skills-building, grounding this mission in tangible local action.

The Jukskei River cleanup was more than just a day of removing rubbish; it was a vibrant demonstration of community spirit and corporate responsibility in action. It served as a potent reminder that environmental impact can extend far beyond office walls, driven by collective effort and the willingness to get one’s hands dirty while striving for a healthier, cleaner future.

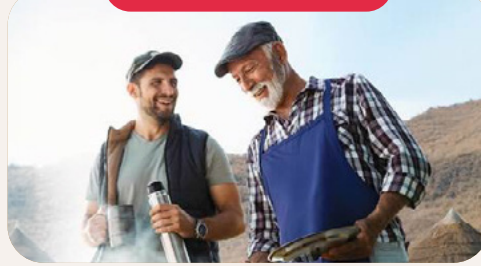
WHAT'S ON AT SUN CITY

BUCY RADEBE LIVE



Saturday, 14 June | Sun City Superbowl
Tickets available on Computicket

FATHER'S DAY



Saturday, 14 June | Sun City Boma
Tickets available on Ticketpro

SONU NIGAM LIVE



Sunday, 15 June | Sun City Superbowl
Tickets available on Ticketpro

SILENT DISCO



Fridays & Saturdays, 27 June - 19 July
Encore Nightclub | Free for hotel residents

ZIYAKHALA MO SUN CITY



Featuring Grammy Award Winners – **Ladysmith**
Black Mambazo and 10 talented SA Artists

Saturday, 28 June | Sun City Superbowl
Tickets available on Ticketpro

U18 CLUB



Tuesdays to Thursdays, 3 - 17 July
Encore Nightclub | Free for hotel residents

EUROCK



Saturday, 19 July | Sun City Superbowl
Tickets available on Webtickets

ALL4WOMEN



With **Kenny Lattimore** And
Metro Fm Love Movement

Saturdays & Sundays, 9 & 10 August
Sun City Superbowl & Greenhouse
Tickets available on Computicket

Sun **FEST**



Visit suncity.co.za for more information
and to book your accommodation

Sun City

Love Every Moment



WATERFALL CITY'S GLOBAL APPEAL

The African Centre for the Study of the United States (ACSUS), a leading multi- and interdisciplinary entity at the University of the Witwatersrand (Wits), Johannesburg, recently hosted 12 students from the 'New Ivy' Georgia Institute of Technology in Atlanta as part of this institute's Study Abroad programme. The intensive five-day programme in May, culminated in a significant showcase: a dedicated tour of Waterfall City, a prime example of a thriving smart city in Africa that is increasingly attracting international attention.

Established in 2018, ACSUS aims to deepen understanding of the United States within an African context through research, teaching, and engagement. A key focus of their work is the Africa-US Cities Project, which fosters collaboration across various sectors to explore the concepts and practices of smart cities. Their initiatives delve into crucial urban aspects such as human security, digital technology application, infrastructure security, healthcare and education linkages, and urban planning.

A core objective for ACSUS is to bridge the knowledge gap between smart city development in Africa and the US,

ultimately empowering African cities to shape their own intelligent urban futures.

The Georgia Institute of Technology's Study Abroad programme aims to provide students with the opportunity to improve their global competencies by exposing them to different histories, cultures, and academic learnings worldwide. This was the first time the programme has visited South Africa via ACSUS, and it was a resounding success. Over and above the tours that focused on the country's diverse history, urban infrastructure and economic growth progress, the programme saw the students enjoy numerous guest lectures by esteemed professors at Wits, including a class on the topic of spatial planning and urban design.

The field trip to Waterfall City, themed '*Re-imagining African Cities: Smart Living in South Africa*', was considered the cornerstone of the wider programme.

This tour provided the students with a first-hand look at a state-of-the-art smart city in action. Representatives from Waterfall City Management Company guided the students through key locations of the development, showcasing

“Waterfall City has become a focal point for international counterparts and educational institutions seeking to understand and learn from its model,”

says Piet Joubert, General Manager of Waterfall City Management Company

landmark buildings. Along the route, they visited Munyaka Estate’s Lifestyle Centre and Crystal Lagoon, the Waterfall Valley Mature Lifestyle Estate, and commercial hubs such as Attacq’s head office. The tour also stopped at Ellipse Waterfall, where the students were shown a penthouse apartment with spectacular views over the entire City. A visit to the green, award-winning Mall of Africa concluded the tour.

Hluma Ralane, Project Coordinator for ACSUS said, “Being able to tour a development like Waterfall City is a massive opportunity for our Africa-US Smart Cities Project, and these students. Some of the most impactful aspects of the tour included a view into the security and safety of this smart city and the walkability element, which provides massive convenience in terms of accessibility to those who live and work here. We were also impressed with the wide scope of local and global entities that have chosen to base their headquarters in this mixed-use development, and seeing the green smart buildings that they operate in. Witnessing first-hand such successful smart living in South Africa provided a solid practical example of the benefits of smart cities and their wider impact on an economy.”

ACSUS’ selection of Waterfall City as a key learning site underscores the development’s growing prominence on the international stage. Having won *Best International Masterplan 2024/25* at the International Property Awards in February this year, Waterfall City’s innovative approach to urban development, infrastructure integration, and quality of life is increasingly being studied as a blueprint for future smart city initiatives globally.

“Waterfall City is not only attracting a diverse range of prestigious international commercial and retail tenants, solidifying its economic significance, but it has also become a focal point for international counterparts and educational institutions seeking to understand and learn from its model,” says Piet Joubert, General Manager of Waterfall City Management Company. “It was a pleasure to host the students and to showcase the innovative, world-class urban design framework of Waterfall City, and we trust that they walked away with some interesting insights into smart city development. It is also a great compliment to be considered for such a tour by ACSUS, and we hope to continue to play a role in future tours too.”

By showcasing Waterfall City, ACSUS was able to provide concrete examples to the students of successful smart city implementation in Africa, demonstrating its potential to international stakeholders and fostering knowledge exchange for the advancement of intelligent urban living worldwide.



Munyaka Lifestyle Centre and Crystal Lagoon



Waterfall Valley Mature Lifestyle Estate



Ellipse Waterfall



Zero to 100km/h

faster than you can say “understated
premium Swedish hybrid SUV”



It's safe to be brave

Test drive Volvo plug-in hybrids today

volvocars.com

V O L V O



Mall of Africa

BUILDING DREAMS



Mall of Africa recently handed over their donation of a new assembly area to Dr Mathole Motshekga Primary School in Rabie Ridge, Midrand, using funds raised through its festive gift-wrapping station held this past December. Besides offering shoppers a seasonal convenience, the gift-wrapping station also contributed to a greater cause: raising funds to uplift the Mall's extended community.

Working in collaboration with the Attacq Foundation and the Gift of the Givers Foundation, Mall of Africa allocated the full R73,833 raised to upgrade the school's facilities. A new, larger sheltered assembly point has been constructed, offering a much-needed, practical space to accommodate the school's growing learner numbers. The remaining funds have been directed towards the school's feeding scheme, which many of the learners rely on daily.

Dr Mathole Motshekga Primary School currently educates over 2,400 learners, the majority of whom come from low-income households. The school operates out of mobile container classrooms, with limited government support for infrastructure improvements since its founding in 2003. The donation comes at a crucial time, addressing one of the school's most pressing challenges: a lack of shelter for assemblies and lunchtime breaks.

"Education is such an important part of helping empower children to live a fulfilled life, and we are delighted that we have been able to uplift the facilities at this school, in a way that will have a lasting impact," said Yasmeen Lorgat, General Manager of Mall of Africa. "We are committed to making meaningful contributions to the community around us, and this donation is one way we're turning seasonal generosity into lasting support."



"We are incredibly grateful to Mall of Africa, the Attacq Foundation, Gift of the Givers and all the partners involved for this generous contribution. The new assembly area is a wonderful structure, symbolising hope and progress for our learners, and will be well used for many years to come. It also means a safer, more dignified space where our children can gather, learn, and grow," said the school's principal, Nthabiseng Sebola.

This donation forms part of Mall of Africa's broader commitment to building purposeful connections with its surrounding communities and contributing to sustainable upliftment through considered partnerships.

For regular updates, follow the Mall on social media at [Instagram.com/themallofafrica/](https://www.instagram.com/themallofafrica/) or <https://www.mallofafrica.co.za/>.





Where **businesses**
come to **grow.**

waterfallcity.co.za



**WATERFALL
CITY**

**Nexus 4
pre-letting
now**

Position your business for success at Africa's
smart city of choice – Waterfall City.

Connect with our leasing team today.

Leasing
Justin Smith
082 362 0800

Broker Enquiries
Lunga Sikutshwa
083 200 2576

Attacq Management Services Proprietary Limited, a wholly owned subsidiary of Attacq Limited, is registered with the PPRA and holds a fidelity fund certificate and trust account in terms of the Property Practitioners Act 22 of 2019.



**GOLF CAR
BATTERY
SUPPLIERS**



UPGRADE TO *LITHIUM POWER* AND *SAVE R5000*

36V & 48V KITS AVAILABLE

INCLUDES

Battery, Charger and Display | Collection and
Delivery in JHB | Installation of kit

**RED
POLE LITHIUM
POWERED**

FOR ALL YOUR BUYING AND SELLING NEEDS CONTACT ME

MARRIAM KHAN
073 160 8822



BEST PROPERTY PRACTITIONER IN KIKUYU 2024

Marriam Khan | Sales Partner
Non Principal Property Practitioner
Registered with the PPRA
073 160 8822 | marriam.khan@rawson.co.za
www.rawson.co.za

RAWSON
Properties

YOUR NEIGHBOURHOOD EXPERTS
FOR THE LAST 40 YEARS



New Online Shop | Start Shopping Online Today!

www.waterwaysbathroom.co.za

© Hansgrohe

meir
BLACK

hansgrohe

DURAVIT

GEBERIT

victoria + albert®

BLUTIDE
taps inspired by life

livingstone
baths

CLEAR CUBE
DISTRIBUTION

DAB
WATERPROOFING

FRANKE

BB
BATHROOM
BUTLER

Gio

NORTHRIDING: 254 HONEYDEW WEST ROAD, CNR NORTHUMBERLAND AVENUE **TEL:** 011 794 4828

KRAMERVILLE: 14 KRAMER ROAD, KRAMERVILLE **TEL:** 011 781 3940

NEW IN THE HOOD

Lacoste unveils a one-of-a-kind experience



There's a new energy pulsing through Mall of Africa – and it comes in the form of classic favourites, iconic crocodile logos, and a store experience unlike anything the continent has seen before. Say hello to Lacoste's brand-new flagship store, a space where heritage meets innovation, and fashion meets function. More than just a retail location, this is the first and only Lacoste flagship of its kind on South African soil – and it's officially open.

Known globally for its effortlessly cool blend of sport and style, Lacoste has redefined what it means to be fashion-forward with an athletic soul. And now, with this fresh new flagship, South African shoppers can immerse themselves in the full expression of the brand. Think crisp whites, bold greens, classic polos, and lifestyle pieces that walk the line between laid-back and luxe.

So, what makes this store so special? Let's start with the design. This isn't your average retail space – it's a visual storybook of Lacoste's legacy. Every corner of the store has been meticulously curated to celebrate the brand's heritage, while also looking boldly into the future. Modern textures, clean lines, and smart digital integrations allow shoppers to engage with Lacoste in an entirely new way – one that's tactile, interactive, and uniquely stylish.

But make no mistake, this is more than a launch. It's a statement. Lacoste's commitment to the South African market is clear, and this flagship store represents a new chapter in that story. Johannesburg is now on the map as a destination for international fashion innovation, and Lacoste is leading the charge.

From the classic polo reinvented, to bold new takes on outerwear, accessories, and footwear, the new Lacoste flagship offers a curated experience that is both timeless and trend driven. While the aesthetic might be French, the energy is distinctly South African – vibrant, aspirational, and ready to make a global impact.

So, whether you're popping in to shop the latest collection, grabbing an exclusive drop, or simply stopping by to soak in the style, the message is clear: Lacoste is here, and it's never looked better. Step inside, and step into the future of sport-luxe fashion. The crocodile has a new den, and it's waiting for you.

Upper Level, Crystal Court
Store No: 2232
011 805 0828

Jetour Bidvest McCarthy Woodmead

JETOUR FINANCE
A product of WesBank

POWER MEETS PRESENCE



10 JETOUR
YEAR 1 MILLION KM
ENGINE WARRANTY

Jetour Woodmead Bidvest McCarthy
1 Waterfall Crescent South, Sandton
012 002 2643

Terms and conditions apply.

JETOUR DASHING
FROM **R4 999** PM

MSC CRUISES

JETOUR
— Drive Your Future —

JETOUR DASHING MOMENTUM
FROM R439 900



RECEIVE A COMPLIMENTARY CRUISE FOR TWO ON MSC CRUISES WITH YOUR DASHING MOMENTUM - EXCLUSIVE TO JETOUR WOODMEAD BIDVEST MCCARTHY!

Jetour Woodmead Bidvest McCarthy
1 Waterfall Crescent South, Sandton
012 002 2643

Terms and conditions apply.

10 JETOUR
YEAR 1 MILLION KM
ENGINE WARRANTY

Jetour Bidvest McCarthy Woodmead

www.jetourmccarthy.co.za

Contact Details:

Switch Board:

012 002 2643

Address:

1 Waterval Crescent South,
Sandton

Trading Hours:

Mon-Fri:

07:30 - 17:30

Saturday:

08:00 - 13:00

Sunday:

Closed

JETOUR FINANCE
A product of WesBank

EXPRESS YOURSELF



10 JETOUR
YEAR 1 MILLION KM
ENGINE WARRANTY

Jetour Woodmead Bidvest McCarthy
1 Waterfall Crescent South, Sandton
012 002 2643

Terms and conditions apply.

JETOUR X70 PLUS
FROM **R5 199** PM

<https://woodmead.jetourmccarthy.co.za/>



MUST DO

It's the Dads' turn to be celebrated this month, and we are here to help you make him feel special! Check out all our Father's Day activities and enjoy a few goodies on us! Plus, find out more about a Secret Sunrise event happening at Waterfall City Park, as well as details on the upcoming Waterfall City Half Marathon. Here's to a wonderful June!

FATHER'S DAY CELEBRATIONS



Spice up Dad's Day

As a token of appreciation for all the amazing Dads out there, each father shopping at Polofields Crossing on 15 June will receive a free bottle of limited-edition braai spice to level up his braai game!

15 June
09:00 – 13:00
Polofields Crossing



Mica is bringing the heat this Father's Day

Spend R300 or more in-store at Mica in Polofields Crossing on Father's Day and get a complimentary 4kg bag of Best Braai Briquettes! Shop, spoil Dad, and braai on us.

15 June
Mica, Polofields Crossing

Cheers to Dad!

Celebrate your Father's Day with a gift he'll love. Bring Dad to Waterfall Wilds for lunch and receive a special bottle opener on us – just our way of toasting the amazing father figures in our lives.

15 June
13:00 – 16:00
Waterfall Wilds





Win the ultimate INGCO combo

Buy any INGCO Power Tool in-store at Mica in Polofields Crossing this Father's Day weekend and stand a chance to win a powerful INGCO 3-piece Chainsaw, Trimmer & Blower Combo – complete with two batteries and a charger! The perfect gift for Dad. Best of luck!

14 & 15 June
Mica, Polofields Crossing



Spoil Dad with Superga shoes this Father's Day

We all know that Dads are iconic. And their shoes should be too. Get 25% off when you buy two or more pairs of Superga shoes for Father's Day. Just what Dad needs to put his best foot forward.

Valid in-store on full-priced items only until 15 June 2025
Mall of Africa
Ts & Cs apply

Win with Curve Gear and Tork Craft Tools

Dads are Built to Last. One lucky winner will receive a Tork Craft toolbox worth R22,000 with a R22,000 Curve Gear voucher to match! That's R44,000 worth of awesome prizes!

To enter:

- Follow @curvegearsa and @torkcraftza
- Find and like the competition post
- Tag three friends
- Comment telling us why you (or your Dad) is Built to Last

Competition closes 15 June 2025
Mall of Africa
Ts & Cs apply

Secret Sunrise at Waterfall City Park

Dare to be different and step out of

your comfort zone. Are you ready for an unforgettable experience? Join us for a Secret Sunrise fitness event that will leave you feeling exhilarated and alive. Get your tickets now and be part of the mystery! Don't miss out on this unique adventure.

15 June
08:30 – 09:30
Waterfall City Park
<https://www.quicket.co.za/events/315234-secret-sunrise-jhb-technicolour/>



Waterfall City Half Marathon

The Waterfall City Half Marathon entries have officially opened. Lace up and get ready for a fun run in the sun. Whether you're running for PBs, walking, or cheering from the sidelines, this is a day for the whole community. Don't miss out, register today.

21 September
21km & 10km: 06:00
5km Fun Run: 06:15

Waterfall City Park, Mall of Africa
<https://waterfallcityac.co.za>

Waterfall City half marathon

21 SEP 2025

**Waterfall City Park
Mall of Africa**

Race start times
06h00 21km & 10km
06h15 5km Fun Run

21km **R280**
10km **R190**
5km **R100**

Early bird: FREE T-shirts for the first 100 online entries (any distance)
Grand master's age 60+: 21km **R240** • 10km **R170** • 5km **R90**
Temporary license fees: 21km **R70** • 10km **R60**
Walkers: 21km **R280** • 10km **R190** • 5km **R100**
These entry fees exclude service charges.

Waterfall City Cares

Give Blood, Save Lives

Be a hero in just 30 minutes! Roll up your sleeve, give blood, and give hope at the blood donation station. Your single donation can help save up to three lives!

14 – 16 June

10:00 – 16:00

Polofields Crossing

Marquee next to West Pack Lifestyle



June Wellness Wednesdays

Wellness looks a little different in the winter months, but the Kauai winter menu has got you covered. Get 20% off on all new Kauai winter menu items this June!

Valid every Wednesday in June

Kauai Mall of Africa

Ts & Cs apply



NEW Vietnamese Steak Wrap
NEW Matcha Mint Smoothie

ASUS at SOOK Mall of Africa

Experience the future of tech at the ASUS pop-up at SOOK Mall of Africa this June.

Explore the latest ASUS and ROG laptops designed for students, professionals, gamers, and creatives. From AI-powered innovation to high-performance gaming and creator-ready ProArt devices, this premium hands-on experience is not to be missed.

In addition to exclusive product showcases, the pop-up store offers limited-time deals and an exciting tech trade-in programme. Shoppers can bring in their old tech and receive a discount toward the purchase of a brand-new ASUS or ROG device.

3 June – 16 July

Find ASUS at SOOK Mall of Africa

Near Crystal Court, Upper Level





What's on at the movies?

Here are this month's exciting new movie releases from Ster-Kinekor:

06 June: *Ballerina*

13 June: *How to Train Your Dragon – Live Action*

20 June: *Elio*

27 June: *M3GAN 2.0*

27 June: *F1*

Book today:

www.sterkinekor.com



Waterfall City Competition



Conditioned Hairdressing

Say hello to Curl Manifesto Fusio-Dose – the luxury treatment your curls have been dreaming of! Hydrates in seconds, defines like a pro, and brings shine levels that turn heads. Frizz-free, soft, bouncy curls? Yes please!

Win a luxury curl-smoothing session:

1. Follow Conditioned Hairdressing on Social Media
2. Like their Competition post
3. Tag a friend (or yourself!) every tag = one entry

Competition closes 8 September

Winner announced on Conditioned Hairdressing IG Stories

Must be willing to be filmed

Ts & Cs apply

Win movie tickets to *Ballerina*

Set in the world of John Wick, we follow Eve, an assassin trained in the deadly traditions of the Ruska Roma, as she embarks on a relentless quest for revenge after her father's death.

Tell us the name of the actress who plays Eve in this action-packed thriller, which started on 6 June at Ster-Kinekor Mall of Africa, and you could win 4 tickets. Email your answer to competitions@waterfallcity.co.za along with your name and contact number.

Competition closes 22 June

Winner announced 25 June

Ts & Cs apply



Crawford

International
Lonehill

PREPARING STUDENTS FOR LIFE BEYOND THE CLASSROOM

At Crawford International, we are committed to shaping well-rounded students who excel academically and grow in a diverse, inclusive community.

Our approach goes beyond the classroom, with a strong emphasis on leadership and communication, while developing the skills needed to navigate a rapidly changing world.

Our highly qualified teachers provide personalised learning, while AI-driven support in subjects like Maths and Science ensures every student reaches their full potential. Flexible timetabling allows students to explore a wide range of subjects, tailored to their interests.

Crawford students are encouraged to pursue their passions and develop the confidence to lead and take on global challenges.

**Crawford International –
Building Global Leaders.**

**BOOK YOUR
PERSONALISED
TOUR TODAY**



www.crawfordinternational.co.za



BOOSTING SCHOOL ATTENDANCE

one pair of school shoes at a time

This winter, nearly 300,000 children are better prepared for school thanks to the remarkable generosity of individual and corporate donors who have made it possible for them to receive a pair of high-quality school shoes through the My Walk Made with

Soul initiative over the past five years.

"School shoes are not just shoes; they represent a sense of belonging and self-confidence, as well as providing practical protection for children's feet, which is crucial as so many learners walk to school," says Delanie Bezuidenhout,

general manager of My Walk Made with Soul, a collaboration between Netcare and Adcock Ingram Critical Care.

"Having appropriate footwear can make the difference between attending school, particularly on a cold winter's day, or missing out on the opportunity

to learn that may never be regained. This is the difference just R35 can make for a child's future."

The My Walk Made with Soul programme converts high-quality polyvinyl chloride (PVC) reclaimed from uncontaminated, non-hazardous healthcare waste, such as drip bags and tubing, collected from participating Netcare hospitals in Gauteng and KwaZulu-Natal into brand new, fully recyclable school shoes for kids.

"Thanks to the tremendous support of our sponsors, these shoes are not only helping to make the path to education a little easier for beneficiaries at schools all over the country, but it has also diverted 145,128kgs of healthcare waste from landfills, repurposing it to extend its usefulness and contribute to a circular economy," Bezuidenhout explains.

For each ton of PVC material recycled and repurposed to make My Walk Made with Soul school shoes, some 1.5 tons of greenhouse gases are prevented from entering the atmosphere.

"It's estimated that a million children in our country still lack proper school shoes, and our mission is to leverage this sustainable and innovative upcycling solution to ensure that every child in South Africa has a pair of school shoes. There is still a considerable way to go, yet we are encouraged by the momentum this programme continues to gain," Bezuidenhout says.



The award-winning My Walk Made with Soul initiative has been recognised for its innovative approach in embracing social and environmental sustainability elements at the SA Breweries (SAB) Beyond Awards as the top entry for the "Beyond Sustainability Project" category for 2024. It also won a Nedbank Green Economy Award for non-profit organisations in the Nedbank Trialogue Business in Society 2023 Awards. Furthermore, the project was selected as a finalist in the New York Festivals Award for health and wellness innovation and won the Eco-Logic Circular Economy and Waste Award for 2024.

Get involved for the price of a cappuccino

For just R35, roughly the price of a medium cappuccino, your donation can provide a pair of durable, sustainable school shoes to a child in need. My Walk Made with Soul is a registered public benefit organisation (PBO) and can provide sponsors with an 18A certificate.

One pair of school shoes for a learner costs R35.

Five pairs of school shoes for five learners cost R175.

Ten pairs of school shoes for 10 learners cost R350.

To enquire about bulk corporate orders, sponsorships, or donations, contact Delanie Bezuidenhout at Delanie.bezuidenhout@mywalk.org.za.



ACHIEVING FINANCIAL FREEDOM

is a journey, not a sprint

By Adriaan Pask, CIO, PSG Wealth



Adriaan Pask, CIO, PSG Wealth

Many people dream of financial freedom, but the path to achieving it is often misunderstood.

It's not a destination you can reach overnight but rather a carefully navigated journey. To succeed, you must focus on the long term, make smart adjustments, and understand the importance of managing risks and diversification.

Maintain a long-term focus

When pursuing financial freedom, it's easy to get sidetracked by short-term setbacks or to be tempted by quick-fix schemes. It's essential to set goals to stay on track. Define what financial freedom means to you – whether it's retiring comfortably or achieving a specific return (such as a certain percentage above inflation) – and let that goal guide your decisions.

Recent trends like speculative investments in cryptocurrency highlight the importance of staying disciplined. These investments often promise high returns, but they come with a wide range of unpredictable outcomes. From that perspective, the wealth planning value of these assets is poor, as it introduces a probability of failure to reach your long-term goals. Chasing quick profits can undermine your long-term plans – especially if you end up losing money in risky ventures. Instead, focus on reliable, long-term strategies that provide the highest probability of success.

There are no quick fixes

While there are no shortcuts to financial freedom, small, calculated adjustments can yield significant results over time. Instead of pursuing high-risk investments, you can enhance your portfolio by identifying opportunities within conventional asset classes that offer value. For instance, during periods when some asset classes may appear overpriced, shifting towards undervalued ones can improve your outcomes without introducing unnecessary risks.

Understand your unique needs

Your goals, risk tolerance and time horizon should shape the strategies you employ to reach your destination. It's equally important to be aware of the risks involved in any investment decision. Risks vary depending on the type of investment, so create a plan that balances stability and growth. Rather opt for assets that align with your goals and have shown reliable performance over time, to reduce uncertainty and increase your chances of success. Risk management is not about eliminating risks entirely but about making informed choices to avoid unnecessary pitfalls.

Choose portfolios with diversification

Diversification is one of the cornerstones of a well-structured financial plan. Equities, bonds and property are all examples of asset classes that can play complementary roles in a portfolio. For example, equities often act as the growth engine for long-term returns, while bonds can provide stability during periods of market uncertainty. Each asset class plays a specific role in your portfolio, contributing to its resilience and overall growth potential.

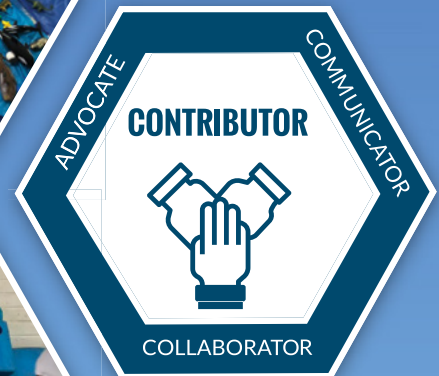
Speculative investments, on the other hand, often lack diversification benefits and reliability, making them unsuitable for a solid financial plan. Trustworthy, research-backed options provide a more stable foundation for achieving your goals.

Inflation threatens financial freedom

Inflation erodes purchasing power over time, so consider investments that outperform it. Stocks are an excellent example of inflation-protected assets. When you invest in companies, their earnings rise in tandem with the price of items sold, offering a natural protection against inflation. In contrast, speculative assets are strongly dependent on sentiment and provide no intrinsic inflation protection. Prioritising investments with built-in inflation protection will shield your portfolio from one of the most persistent risks to your wealth.

Stay the course and exercise patience

Trust the process. Focus on your long-term goals, diversify your investments and choose strategies that align with your needs while protecting your wealth from inflation. By taking a steady and consistent approach, you can navigate the challenges of the journey and ultimately achieve the financial independence you seek. The long-term effects of disciplined investing compound over time and can be significant.



Since 1982

AMERICAN INTERNATIONAL SCHOOL OF JOHANNESBURG

Pre-K 3 (000) - Grade 12

Campuses in Pretoria & Johannesburg

From before birth, children are **connected** to their **families, communities, and cultures**. Every child is born with a spark of **curiosity** — an eagerness to **explore** and understand.

The **first steps** shape a lifelong love of learning, with each experience and discovery **fuelling their growth** and setting the **foundation** for a lifetime of exploration.

WORLD-CLASS *Early Childhood* EDUCATION



Early Childhood Programme Ages 3 and 4.

*Offering: IB Primary Years Programme
Candidate School*



Inquiry and Play-Based Learning

*Offering: Design Technology
in Elementary (Pre-K - Grade 5)*



Language Offerings

*Offering: French & Spanish in Elementary.
Arabic as a co-curricular*



Embracing Neurodiversity

*Offering: English Language Learners,
Student Support Services, Learning
Support & Learner-Specific Pathways*



An investment in your child's future.

*Offering: **US\$9 800** Annual Tuition Fees*



Northern-Hemisphere Calendar (August-June)

Future READY, *Fun* TODAY!

YEAR-ROUND ADMISSIONS. START THE JOURNEY TODAY!

admissions@aisj-jhb.com | www.aisj-jhb.com

EMAIL US



A DREAMY ESCAPE



Entrance



Earth Grotto Suite Exterior



Pool deck

Perched on the very edge of the Drakensberg slopes, Angels View Hotel in Graskop is practically suspended in mid-air. This isn't just a hotel; it's a love letter to the Drakensberg, a place where the landscape steals the show and your Instagram feed gets a serious glow-up.

The hotel boasts a myriad of accommodation options, but we recommend the Earth Grotto suites. Think eco-friendly architecture with domed garden roofs and rammed earth walls. Reminiscent of a Tolkien novel, only with plush

interiors and a view that'll make you feel like you're floating. (Fair warning: kids might feel a bit too close to the edge, making this the perfect weekend escape for mum and dad.)

The décor throughout the hotel is gorgeous and we loved the fireplaces in every nook and cranny including the secluded Mchaveleri's Library where one can read or play chess, nursing an evening tippie. If we had our way however, we would have spent the whole time by the pool, which overlooks the God's Window escarpment.



Superior Room



Mumsy's Dining Room



Lounge Area

The main pool and lap pool, which can be seen from all areas thanks to a split level, beckons you for a cool down.

Our dining experience was also impressive. We ate at Mumsy's Restaurant and enjoyed calamari, chicken livers and trout fish cakes. For breakfast we wolfed down the famous Angels View French toast – deep-fried, cornflake-crusted, and piled high with banana, bacon, and syrup. It's a breakfast that'll make you forget all your dietary restrictions.

Angels View Hotel is more than just a place to stay; it's where you go to find peace and inspiration – where the chaos of the world fades into the breathtaking panorama. And in a world that's increasingly chaotic, that's a pretty hot commodity.

Get in contact: www.angelsview.co.za, +27 011 516 4367,
Book your stay: res@extraordinary.co.za

Article courtesy of Muse Magazine, www.musemagazine.co.za



skinPhD
WATERFALL CORNER

HAIR, BEAUTY & NAILS

ALL IN THE COMFORT OF A SINGLE SALON

Located in the heart of Waterfall, **SkinPhD Waterfall Corner** is your go-to destination for a top-to-toe experience.

SERVICES INCLUDE:

- Advanced Peeling & Needling
- Dermaplaning
- Lash & Brow Enhancements
- Massages
- Manicures & Pedicures
- Nail Enhancements
- Waxing
- Laser Hair Removal
- Laser Face Rejuvenation
- Cut & Blow Wave
- Colour & Highlights
- Perms & Smoothing
- Extensions
- Ethnic Hair Treatments
- Weaves & Braids

LASER MACHINE

HAIR REMOVAL

- Brows, Lip & Sideburns
- Chin, Full Face & Neck
- Underarms & Arms
- Chest, Nipples & Stomach Line
- Back & Buttocks
- Bikini, Brazilian, Hollywood & Legs

SKIN REJUVENATION

(Carbon Treatment)

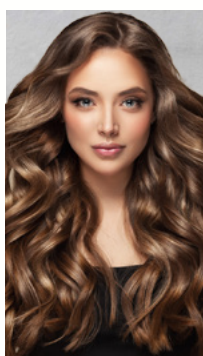
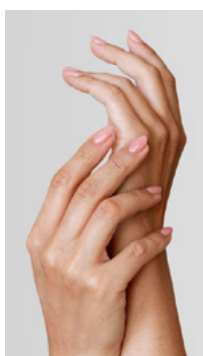
- Reduces Wrinkles & Fine Lines
- Stimulates Collagen
- Improves Skin Elasticity
- Reduces Acne Scarring & Breakouts
- Enhances Skin Tone & Texture



SKINPHD PRODUCT RANGE

Expertly developed in South Africa, SkinPhD's proudly owned skin care product range caters to all genders, ages and ethnicities - delivering actives from the skin's outermost barrier to cellular level for targeted results.

Through strategic partnerships with leading brands such as Redken, L'Oréal Professional, Kérastase, Mzani and Veaudry, we offer a comprehensive selection of premium hair, beauty & nail care products and services.



**SCAN QR
CODE TO
VIEW
SPECIAL
OFFERS**

Tel: 010 596 8942
WhatsApp: 079 062 8928
www.skinphd.co.za
waterfallcorner@skinphd.co.za

Africa's Largest Selection of Patio Furniture & Accessories

Patio

WAREHOUSE

www.patiowarehouse.co.za



Centurion - 012 657 9400 | Randburg - 011 801 0820 | Cape Town - 021 526 7240 | Somerset West - 021 840 4160
Umhlanga - 031 566 8550 | George - 044 010 0102



THE CALL TO THE MODERN COFFEE BAR

Today's coffee bars are more than places to grab coffee – they are destinations

The right design for a coffee bar doesn't just attract customers; it keeps them coming back. But standing out in 2025 means pushing past expected aesthetics. A cosy atmosphere isn't enough. A stunning layout isn't enough. A space that blends function, experience and branding in a way that feels effortless is needed.

A well-designed coffee bar should feel as good as it looks. That's where so-called "biophilic design" comes in – bringing natural elements into the space to create an environment that's both visually appealing and emotionally grounding. Customers don't just notice these details; they respond to them.

Lighting isn't just decorative; it affects how long customers stay and how they interact with the space. Warm, soft lighting encourages relaxation, making a coffee bar feel like a spot to linger. Bright, cooler lighting keeps energy levels high and is ideal for fast-paced coffee spots with high turnover. To create a flexible atmosphere, some coffee bars adjust their lighting throughout the day – brighter in the morning to match the rush and softer in the evening for a more relaxed vibe.

Nature has a measurable impact on mood, comfort and overall experience. Coffee bars that incorporate biophilic elements create a refreshing contrast to urban settings and help customers feel more relaxed. The right mix of materials, textures and greenery makes the space inviting while also reinforcing sustainable design values. When integrated thoughtfully, coffee bar interior design that incorporates biophilic elements can enhance both aesthetics and functionality, creating an immersive environment that draws in customers.

Sustainable materials that work in modern coffee bars

Eco-friendly materials don't have to compromise aesthetics. Reclaimed wood pairs beautifully with metal bar stools, balancing rustic warmth with modern industrial design. Recycled metals and glass create a sleek, contemporary contrast, while earthy materials like clay and cork add organic depth to space. The right combination of textures enhances the atmosphere, ensuring that sustainability is an integral part of the design rather than an afterthought.

For coffee bars looking to elevate their space further, local artists can contribute custom décor, murals or handcrafted furniture made from sustainable materials. This not only adds a unique touch but also strengthens community ties and supports small creators. A well-designed, eco-conscious coffee bar doesn't just benefit the environment, it enhances the memorable coffee experience that keeps customers coming back.

High-end ordering solutions

Customers expect convenience. A long wait, a slow checkout or a confusing menu can push them towards competitors. High-tech ordering solutions keep service efficient, cut down on bottlenecks and improve client satisfaction, all without sacrificing the coffee bar experience.

Coffee bars that integrate smart, tech-driven ordering systems remove friction from the process, allowing customers to place orders quickly and get their drinks or food without unnecessary delays.

A well-designed outdoor seating area does more than add extra tables; it creates an inviting space that draws in foot traffic, enhances customer comfort and boosts overall revenue. Whether it's a sidewalk café, a courtyard or a patio, outdoor seating transforms a coffee bar's appeal by making it feel more open, social and flexible.

What is Café Core?

Café Core is about embracing the lifestyle of coffee bar culture as much as the aesthetic. Whether this means fostering a sense of community and connection, while also creating solo moments to slow down and find a reprieve from the whirring repetition of life, it embodies the feeling of comfort and nostalgia.

It's all about enjoying the simple pleasures of life: a good cup of coffee in a warm and welcoming space.

Sources: <https://www.crowntv-us.com> <https://www.elledecor.com>



SHELVING AS STORAGE SPACE

Decorating shelves can be a tricky business. These latest décor trends will help you get started

Interior designers train for years to come up with stylish shelf ideas. Making their work even harder is the fact that trends come and go in the blink of an eye. This is where personal preference comes in, along with their expert assistance.

Timber pieces have always been a staple in interior design. In the past, we have seen a preference for painted wooden shelves that blend in seamlessly with the wall. However, in 2025, rather than blending into walls with painted finishes, natural wood shelves are being celebrated for their raw, organic look.

Opt for natural, untreated timber that follows the wood's natural shape and grain. This offers a more natural and rustic look that brings warmth and depth into a room. Whether you're lining shelves with books or you're placing a few décor pieces like candles, reed diffusers or an ornament, timber shelves are guaranteed to impress.

Bedroom storage

When assessing bedroom storage, built-in cupboards are the obvious place to start as they are typically the largest piece of storage furniture that a bedroom will have. Often, the most common cause of clutter in a bedroom is clothes. Without dedicated walk-in wardrobes you'll struggle to keep your clothes organised and tidy.

For smaller bedrooms, maximising storage is key. In this instance, above-bed shelving offers a clever solution. Built-in storage surrounding the bed creates additional space without making the room smaller. To make accessing your items practical, place frequently used items in the eye-level cupboards and reserve overhead storage for items that you don't often reach for.

Bookshelf trends in 2025

Lately, designers have been thinking outside the box with their bookshelf trends. A standard bookcase won't

make much of a design statement, but integrating bookshelves around alluring architectural features like curved walls, or building built-in shelving around doorways or windows, is a guaranteed way to grab the eye.

Far from the traditional bookshelf, library walls are a huge favourite in 2025. From floor to ceiling, this massive installation displays a whole range of books and adds great charm to a room. By choosing a bookcase of this type, the room will appear larger and more sophisticated.

Library walls and unique bookshelf structures are trending, replacing traditional bookcases. To modernise the space, stack books horizontally or arrange them by colour for depth and aesthetic appeal.

Smart kitchen storage trends

A pantry has long been one of the most desirable storage ideas to include in





kitchen design. It's easier to store all the dry ingredients and it looks organised.

An appliance cupboard is an elevated pantry trend – simply use a double-doored cupboard to store your daily small appliances. It keeps them all contained in one spot, adding ease to your morning routine and creating a much tidier kitchen.

A home bar in the kitchen can be simply shelved out for glassware and be more professionally equipped with a built-in sink, wine fridge and ice buckets.

Integrated bathroom storage

Clutter-free bathrooms are a must in 2025. Integrated storage solutions like built-in shelves, hidden cabinets and recessed niches will help keep everything organised and within

reach. In addition, you can use drawer organisers and bins to store toiletries and cosmetics neatly. These are features we expect to see more of, especially in small bathrooms.

Create space for everyday essentials – think hair products and toiletries by mounting shelves in the window. A small space between the toilet and shower is all you need to squeeze in a three-tier storage caddy. Clear shelves (glass or acrylic) are great for small spaces as they look clean, light and nearly invisible.

Go the extra mile in your bathroom by having built-in shelves all over the wall. This will create space for everything, including towels, ornaments, baskets of toiletries and bins of cleaning products and hair tools.



Bring the space into a bathroom with a simple bath tray that can hold everything from reading material to candles and body products.

Sources:
www.shelved.co.uk
www.homesandgardens.com
www.idealhome.co.uk





Divan du Toit
BIOKINETICISTS

INJURY REHABILITATION

Waterfall Virgin Active

082 707 2068



DivanduToitBio



Divan du Toit Biokineticists



Divandutoitbio@outlook.com

PAINT FRIENDLY cc

for all your

**DAMP-PROOFING
WATERPROOFING**
Chris - 082 332 9225

Owner Supervision
Guarantees
References available

**LAZIS
ELECTRICAL**



COMMERCIAL • INDUSTRIAL • RETAIL • RESIDENTIAL

SERVICES:

Certificate of compliance
Tripping & fault finding
New installations
Maintenance

Faulty geysers, stoves & ovens
Repairs: plugs, light switches etc.
Gate motors & electrical fences

Call: 073 127 3921 / 063 703 0220



info@topturf.co.za
087 286 5625

www.topturf.co.za

Rooting for a greener tomorrow

The
Specialists
Pest Control • Cleaning • Hygiene

BOOK YOUR PROFESSIONAL
CLEANING OR PEST CONTROL
SERVICE **TODAY** AND **SAVE!**

ALL BOOKINGS BETWEEN

R950 – R1250
GET R100 OFF

R1250 – R1650
GET R150 OFF

R1650 +
GET R200 OFF

ONLY VALID FOR BOOKINGS MADE FOR JUNE '25

BOOK NOW



012 656 1341 PEST



012 654 5534 CLEAN



**Plumb-Avid
Projects**

Call today:

071 875 0218 or 012 654 2513

Our services include:

Blocked Drains
Leaks
Burst Geysers
Alterations
New Installations
Electrical Work
General Maintenance

COLCACCHIO
WATERFALL

3 FOR 2

TASTY TUESDAY TRIO

**INDULGE IN ANY 3 PIZZAS, PASTAS
AND/OR SALADS & GET THE
CHEAPEST ITEM FOR FREE.**

COLCACCHIO WATERFALL | 010 205 9004
OFFER AVAILABLE FOR COLLECTION ON TUESDAYS
ONLY, UNTIL 26 AUGUST 2025. T&CS APPLY.

Winter Warmer Recipe

EASY CARROT AND LENTIL SOUP

This quick carrot and lentil soup recipe is perfect for weekday dinners. Naturally vegan, it contains just 12 simple ingredients and comes together in less than 30 minutes.

Ingredients

- 1 medium onion
- 4 very large carrots
- 2 cloves garlic
- 1 tablespoon olive oil
- 1 teaspoon chili powder
- ½ teaspoon smoked paprika
- ½ teaspoon turmeric powder
- ½ teaspoon cumin
- ½ teaspoon pepper
- 1½ cups lentils (270g)
- 4½ cups vegetable broth or stock (1.1 litres)
- 1 cup dairy-free milk
- Salt to taste

Instructions

1. Roughly chop the onions and carrots, and peel and crush the garlic.
2. Add onions and garlic to a large pan with olive oil and sauté for 5 minutes - stirring frequently until the onions are soft and translucent.
3. Add chopped carrots, chili powder, paprika, turmeric, cumin and pepper to the pan, and sauté for 2 minutes.
4. Add the lentils, vegetable broth and milk to the pan. Bring soup to a boil and reduce heat until gently bubbling.
5. Simmer soup for 12-14 minutes until the lentils are soft.
6. Transfer to a blender, and blend on high power for about 20 seconds until the soup is creamy (you might need to do this in two batches).
7. Return to the pot and add salt to taste (you may need to add about 1 teaspoon salt). If your soup is thicker than you'd like, add a little more dairy-free milk, broth or water. Reheat if needed.

Serve in large bowls, optionally garnished with fresh cilantro or parsley, lime juice, chili flakes and dairy-free cream or yoghurt. You can also use coconut milk for the creamiest soup!

Source: <https://vancouverwithlove.com/lentil-carrot-soup/>

Waterfall City Classifieds

MEDICAL SERVICES

AUDIOLOGY/HEARING

Hearcare Waterfall Hearing and Balance Clinic 011 304 7920
Free hearing screenings. Home visits in Waterfall City estates. Rooms: Waterfall City Netcare Hospital. www.hearcare.co.za

MEDICAL GENERAL

Kyalami Health 010 335 0625
General practitioners/travel/aesthetics/immunisation/drip clinic pathology/mum and baby clinic/minor surgical procedures. Kyalami Downs Shopping Centre. Email: info@kyalamihealth.co.za

MENTAL HEALTH

J.A Therapy 079 520 0982
J.A Therapy provides personalised remedial therapy, tutoring, and clinical psychology services, focusing on enhancing learning and mental well-being. Visit www.jatherapy.co.za or email info@jatherapy.co.za

OCCUPATIONAL HEALTH PRACTITIONER

Occupational Health Medical Screening (Red tickets) and Travel Clinic 082 862 7892
Address: 181 Bekker Road, Vorna Valley, Midrand. Booking is essential: midrandkohc@krielhealthcentre.co.za

OPTOMETRIST

Specsavers for affordable eye care, contact our experienced team.
Mail of Africa 010 612 6440
Optometrists Marlize Joubert and Monica Naicker
Book online: www.Specsavers.co.za

GENERAL SERVICES

BABY AND CHILD CARE

Call Sarah Austin 071 135 9996
Available in the Waterfall City area. Sarah has 15 years' experience in baby and child care and she has recently moved to Waterfall City. She is available on a full-time/part-time/ad hoc basis. References/CV available.

CATERING

Chef Neo
A bespoke catering and private chef service. Dinner parties, high teas and delectable buffets in the comfort of your own home. Visit www.platedbychefneo.com to book.

CLEANERS

Crisp and Clean 083 378 3331
Door-to-door, taking the hassle out of cleaning laundry, dry cleaning, upholstery and carpet cleaning.

COMPUTERS

Matrix Warehouse 011 466 0434
We offer a wide variety of products and services including new PCs, notebooks, tablets, printers, networking products, all PC/NB related cables and accessories. We also offer repairs on all PCs and NBs, both software and hardware problems. kyalami@matrixwarehouse.co.za

DELIVERY SERVICE

Mr Delivery Midrand 011 315 2926

HOME CLEANING SERVICE

Clean My Bed 069 797 6370
Jonathan Akal
Clean My Bed is a medical grade, deep clean sanitising service that removes dust mites and pet dander to help with allergies. Email: jonathana@cleanmybed.com or visit: www.cleanmybed.com

Clean My Space ZA 076 251 2263

We are a Domestic Cleaning Service offering peace of mind to homeowners. We exist to ensure that household chores do not interrupt your already busy calendar. Book us daily, weekly or monthly on our website: www.cleanmyspaceza.co.za, or WhatsApp 076 251 2263. If you prefer to speak to a human, call us on 076 251 2263. Clean My Space ZA is based in Kyalami and services the Waterfall City and Kyalami areas.

Pest Control, Cleaning and Hygiene Pest 011 804 3454
Clean 011 675 5956
With over 46 years of experience in the industry, we specialise in providing solutions tailored to meet the unique needs of both individuals and businesses.

HYPNOSIS

22 Steps
Lee-Anne 081 282 0461
Make positive changes. Gain greater control of your life. I can help you with anxiety and stress, exam stress, fears, weight loss, stop smoking, addictions, emotions/grief, relationship issues or self-confidence.

PET GROOMING

Soapy Smooches Mobile Pet Groomers 061 087 8247
We come to you! Pamper your pets at home in our fully-equipped pet parlour on wheels. BOOK NOW - info@soapysmooches.co.za

PET & HOME SITTERS

Pet/Home Sitter 076 035 6908
Why leave your pets alone and away from home. Leave them in their own loving home. Mature Lady fills the gap. Contact Dee-Jean at djb160453@yahoo.com

RESTAURANTS

Col' Caccchio Waterfall 010 596 8941
waterfall@colcaccchio.co.za

SPEECH & LANGUAGE THERAPIST

Lara Ramos 082 480 6716
Specialising in both child and adult disorders. Email: l.d.amos@hotmail.com

TUTORING

Maxi Brain Tertiary & Secondary Tutor 079 693 7190
Economics & management sciences subjects, bridging classes, private & groups.

TYRES

Supa Quick 011 466 6076
Kyalami Boulevard

HOME SERVICES, BUILDING & MAINTENANCE, APPLIANCE REPAIRS

ARCHITECT

Drawbox Design Studio 082 339 5834
The Leader in providing sustainable building solutions. Contact Carlu Swart.

BUILDING

Care Construction and Paving 011 469 4300
Ian 083 250 3736
We specialise in new houses, additions and alterations, paving, painting and all your building requirements, no matter how big or small. Over 30 years' experience. www.careconstruction.co.za
Email: ian@careconstruction.co.za

DRAIN MAINTENANCE

SirDrain 011 454 3534 / 083 231 5809
Call us for professional cleaning and unblocking of drains, using a drain machine or rods.

ELECTRICIAN

Affordable Electrician

Lazarus 073 127 3921
Issuing COC's (same day), installation of solar systems and inverters, repairs to faulty plugs, switches, lights, ovens, stoves and geysers, commercial and industrial electrical maintenance and repairs.

Taylor Electrical 0861 102 174
Domestic, commercial, industrial, compliance certificates, energy saving.

FLOORING

Turkish Carpet Gallery Shop 071 648 3050
065 604 1999
For classic, modern and abstract carpets, visit us at Kyalami Corner Shopping Centre, Upper Level, Shop 107. Our other services include washing, cleaning and carpet repairs done professionally.

GARDEN & POOLS SERVICES

BlueBerry Hill Solutions 084 436 1498
We offer edible landscaping, full concept designs, garden maintenance, rainwater harvesting solutions, and automated irrigation systems for beautiful, sustainable gardens. Visit: www.blueberryhillsolutions.co.za, or email: info@blueberryhillsolutions.co.za

Crewcut Gardens & Pools

Peter Mark 082 450 1111
082 789 7916
Weekly garden and pool maintenance. We build new pools or remarshal old ones. Suppliers of all pool spares, including pool pumps. Contact via email: peter@crewcut.co.za or mark@crewcut.co.za

GAS SUPPLY SERVICES

Falcon Gas 073 818 3532
Try our exceptional service for your LPG cylinder, refill/new cylinder supply. We comply to all Estate Safety & Security regulations. Free delivery to your home or business within Waterfall City. Email: falcogas.sa@etgworld.com

LOCKSMITH

Brad's Lock and Key 082 854 9898
All locks opened/fitted/replaced 011 802 4114
Also doors fitted/motors repaired/security gates custom-made. All work done by myself on-site. websites: bradslock.co.za/bradsgates.co.za
email: bradslock@telkomsa.net

PAINT & BUILDING SUPPLIES

Colour Creations 011 466 0065
Paint, hardware, plumbing and building suppliers in Kyalami.

PLUMBERS

Plumb-Avid Projects 012 654 2513
071 875 0218
The leading name in plumbing and maintenance, now offering municipal water backup and rainwater harvesting solutions.

RDL Pro Plumbing 067 839 5224
Reliable plumbing services you can count on. Prompt, precise, and professionally delivered in Waterfall City, Fourways and Dainfern. No ghosting – just solutions.

Sandton Plumbers 083 460 9870
Maintenance & Construction experts. Over 36 years' experience. PIRB Registered & Solar Certified Installer.

PROPERTY MAINTENANCE

Carl Allan Property Maintenance 082 740 2356
Based in Waterfall City. We take care of all your maintenance: steelwork, carpentry, painting and all related repair work. Contact Carl Allan. Email: capm.renovate@gmail.com

Waterfall City Contacts

Capacity	Name	Contact Number	Email
CEO - Waterfall Country Estate and Waterfall Village	Kenneth Gaynor	010 591 4671	kenneth@waterfallcountry.co.za
CEO - Waterfall Equestrian Estate	Gerhard du Toit	060 988 1059	gerhard@waterfallequestrian.co.za
General Manager - Waterfall Hills Mature Lifestyle Estate	Shae Braithwaite	081 810 0770	shae@whra.co.za
Estate Manager - Waterfall Valley Mature Lifestyle Estate	Christo van Jaarsveld	079 352 8327	estatemanager@waterfallvalley.co.za
Estate Manager - The Polofields, Waterfall	Nadia Zelubowski	060 759 1580	estatemanager@polofieldswaterfall.co.za
Estate Manager - Kikuyu, Waterfall	Laurine Kleynhans	068 199 8553	estatemanager1@kikuyuwaterfall.co.za
Estate Manager - Munyaka, Waterfall	Courtney Johnson	066 595 1525	munyakaem@munyakawaterfall.co.za
Estate Manager - Ellipse, Waterfall	Karmen Richards	081 482 7831	estatemanager@waterfallellipse.co.za
Property Manager - Waterfall View	Anita Granger	071 595 8167	anita@elgaru.co.za
Security Manager	Shawn Benningfield	076 144 8197	shawn@waterfall.co.za
Sustainability Manager	Ruan Spies	060 966 4211	ruan@waterfall.co.za
Attacq Leasing	Justin Smith Lunga Sikutshwa	082 362 0800 083 200 2576	justin@attacq.co.za lunga@attacq.co.za



emergency numbers

DEDICATED WATERFALL CITY SERVICES

Fire Ops Waterfall City	083 622 6026
Netcare 911 Emergency Medical Services Waterfall City	010 209 8365

PETS & ANIMAL RESCUE

Animals in Distress	011 466 0261
Midrand Veterinary Hospital	011 315 1575
SPCA	011 265 9935
SPCA Midrand Emergency	083 441 1564
Sunninghill Village Vet	011 803 1221

OTHER SERVICES

Ambulance/Fire	10177
Ambulance/Fire/Metro Police	011 375 5911
Ambulance/Fire Midrand	011 847 4600
Carstenhof Clinic	011 655 5500
Crime Stop	086 001 0111
Midrand Trauma Support	076 979 9017
Netcare Emergency/Ambulance	082 911
Netcare Sunninghill Hospital	011 806 1500
Netcare Waterfall City Hospital	011 304 6600
Police/Flying Squad	10111
Police Midrand	011 347 1600

Waterfall City Resale Agent Panel

WATERFALL COUNTRY AND COUNTRY VILLAGE ESTATES

AFRIQ PROPERTIES

Adedolapo Akinrinade
adedolapo@afriqproperties.co.za
078 259 4262

ALLEGIANCE PROPERTIES

Amy Pepler
amyp@allegianceproperties.org
082 374 9129
Debbie Hough
debbieh@allegianceproperties.org
073 166 5435
Julian Cornofsky
julianc@allegianceproperties.org
083 444 5141

BOTHMA AND CO REAL ESTATE

Vicky-Lee Coffen
vickylee@bothmandco.com
061 615 3248
Winnie Bothma
winnie@bothmandco.com
082 259 9492

BYRON THOMAS PROPERTIES

Megan O'Donovan
megan@btproperties.co.za
072 969 2428

CHAS EVERITT MIDRAND

Phiwe Myeza
phiwe@everitt.co.za
082 710 3463
Nana Myeza
nana.myeza@everitt.co.za
063 719 6308

CHAS EVERITT SANDTON

Angelique van der Merwe
angelique.vdm@everitt.co.za
072 528 8130
Angelique Wannenber
angelique.s@everitt.co.za
083 611 6298
Gary Berkowitz
garyb@everitt.co.za
061 540 3265

DORMEHL PHALANE PROPERTY GROUP

Dylan Coffen
dylancoffen@dpg.co.za
079 742 6197
Wyde Benn
wydebenn@dpg.co.za
079 075 1192

EAGLE DWELL PROPERTIES

Niran Adenigba
niran@eagledwell.co.za
078 443 1931

EXP REALTY

Deidre Bruintjies
deidre.bruintjies@expsouthafrica.co.za
081 889 2458
Kym Clephane
kym.clephane@expsouthafrica.co.za
076 024 3862
Martin Gunn
martin.gunn@expsouthafrica.co.za
082 925 3339
Connie Peter
connie.peter@expsouthafrica.co.za
082 496 5827

F.G. LATTO

Fraser Gourlay
fraser@fglatto.co.za
072 767 7489
Noksie Gourlay
noksie@fglatto.co.za
078 332 6111
Susan Kruger
susan@fglatto.co.za
072 956 8311

FINE AND COUNTRY MIDRAND

Ikrum Gabr
ikram@gsapp.co.za
082 228 7993
Tanya Mohr
tanya@gsapp.co.za
083 276 3004

GLOBAL EXCLUSIVE PROPERTIES

Fungai Ngehama
fungai@globalexclusive.co.za
072 860 4499

HARCOURTS LIFESTYLE MIDRAND

Hjalmar Venter
hjalmar.v@harcourts.co.za
072 468 4228
Karen Kruger
karen.kruger@harcourts.co.za
072 603 2320

HARPROP REAL ESTATE

Irmie Reif
irmi@harprop.co.za
082 905 1213

JAWITZ PROPERTIES (TURNKEY)

Belinda Hickson
belindah@jawitz.co.za
082 835 0099
Cathie Bester
cathieb@jawitz.co.za
083 616 0348
Sue de Klerk
sued@jawitz.co.za
083 676 6012

KBMO PROPERTIES

Lebogang Modipane
kamo@kbmo.co.za
062 733 6836
Sibongile Mkhathjwa
sibongile@kbmo.co.za
069 582 9175

KENT GUSH PROPERTIES

Nicky Makhathini
nicky@kentgush.co.za
073 832 0219

LUXLIV PROPERTY GROUP

Marussia van der Merwe
marussia@luxlivproperty.com
083 384 0618
Joelle McMaster
joelle@luxlivproperty.com
084 020 1111
Laura Carr
laura@luxlivproperty.com
082 868 0135

LWP PROPERTIES

Alma Brown
alma@lwp.co.za
083 947 2726
Brian Anthony Hickson
brianh@lwp.co.za
083 405 0000

MANDATED PROPERTY GROUP

Pam Bingo
pam@mandated.co.za
079 216 7800

NTSIKIE MGAYIYA REAL ESTATE

Ntsikie Mgaya
ntsikie.mgaya@nmrealestate.co.za
079 101 0921

PIVOTAL PROPERTIES

Elias Ngoma
elias@pivotalproperties.co.za
083 200 7100

PLATINUM RESIDENTIAL

Andrew Pearse
andrew@platinum.co.za
083 652 8888
Annalize Morris
annalize@platinum.co.za
082 347 7305
Melanie Pearse
melanie@platinum.co.za
083 390 0000
Graeme Bunyard (Vacant Land)
graeme@platinum.co.za
082 882 5861

REMAX ADVANTAGE

Jelena Frasco
frasco@remax-advantage.co.za
083 327 0623
Loline Merifield
loline@remax-advantage.co.za
076 579 5543
Nonjabulo Masakhane
nonjabulo@remax-advantage.co.za
067 985 2062

REMAX ONE

Ian Ross
ianross@remaxone.co.za
083 676 5766

SOTHEBYS REALTY

Tina de Waal
tinad@sothebysrealty.co.za
083 771 8709

SPECTRUM REALTY

Nandipha Ngcobo
nandiphan@spectrumrealty.co.za
071 482 1683

SUFEMI PROPERTIES

Chantelle Mhlana
chantelle@sufemiproperties.co.za
079 109 0318

THIS IS ME PROPERTIES

Jessica Hofmeyr
jessica@thisismeproperties.co.za
082 937 4760

TYSON PROPERTIES

Nastasia Peters
tash@tysonprop.co.za
063 185 4020

VELICIAE LUXURY REAL ESTATE

Kimlynn Kemp
kimlynn@veliciae.com
082 250 8667

KIKUYU

AFRIQ PROPERTIES

Adedolapo Akinrinade
adedolapo@afriqproperties.co.za
078 259 4262

AMALGA REAL ESTATE

Maureen Babane
maureen@amalgarealestates.co.za
079 842 5104

CHAS EVERITT MIDRAND

Darren Jugdhaw
darren@everitt.co.za
067 252 9652

CHAS EVERITT SANDTON

Angelique van der Merwe
angelique.vdm@everitt.co.za
072 528 8130
Babalwa Yakopi
babalwa@everitt.co.za
079 177 8513
Lulama Konza
lulama.konza@everitt.co.za
064 515 6126

DORMEHL PHALANE PROPERTY GROUP

Dylan Coffen
dylancoffen@dpg.co.za
079 742 6197
Wyde Benn
wydebenn@dpg.co.za
079 075 1192

EAGLE DWELL PROPERTIES

Niran Adenigba
niran@eagledwell.co.za
078 443 1931

EXP REALTY

Deidre Bruintjies
deidre.bruintjies@expsouthafrica.co.za
081 889 2458
Martin Gunn
martin.gunn@expsouthafrica.co.za
082 925 3339

HARCOURTS LIFESTYLE MIDRAND

Hjalmar Venter
hjalmar.v@harcourts.co.za
072 468 4228
Karen Harris
karen.harris@harcourts.co.za
072 775 2080
Tumelo Malefo
tumelo.malefo@harcourts.co.za
074 063 5819

HARPROP REAL ESTATE

Irmie Reif
irmi@harprop.co.za
082 905 1213

JAWITZ PROPERTIES (TURNKEY)

Belinda Hickson
belindah@jawitz.co.za
082 835 0099
Cathie Bester
cathieb@jawitz.co.za
083 616 0348
Gene Witepski
genew@jawitz.co.za
082 455 5210

KELLER WILLIAMS EDGE

Uhuru Matlhaji
uhuru.matlhaji@kwsa.co.za
078 959 9407

KENT GUSH PROPERTIES

Elisha Paul
elisha@kentgush.co.za
076 498 0137

LJT PROPERTIES

Lawrence Toendepi
Lawrencet@ljtproperties.co.za
076 404 0810

LUXLIV PROPERTY GROUP

Marussia van der Merwe
marussia@luxlivproperty.com
083 384 0618
Joelle McMaster
joelle@luxlivproperty.com
084 020 1111
Victoria Zwane
victoria@luxlivproperty.com
061 690 1170

LWP PROPERTIES

Alma Brown
alma@lwp.co.za
083 947 2726
Brian Anthony Hickson
brianh@lwp.co.za
083 405 0000

MANDATED PROPERTY GROUP

Pam Bingo
pam@mandated.co.za
079 216 7800

NATURAL PROPERTY

Nina Chetty
nina@naturalproperty.co.za
082 560 1373
Slade Brookes
slade@naturalproperty.co.za
083 612 2515

NTSIKIE MGAYIYA REAL ESTATE

Ntsikie Mgaya
ntsikie.mgaya@nmrealestate.co.za
079 101 0921

O-YES PROPERTIES

Nalini Bageloo
nalini@o-yes.co.za
083 287 5624

RAWSON PROPERTIES PAULSHOF

Hermann Djiendeu
hermann.dj@rawson.co.za
083 445 0425
Marriam B Khan
marriam.khan@rawson.co.za
073 160 8822

REMAX MASTERS

Victoria Serfontein
victoria@remax-masters.co.za
076 481 5171

REMAX ONE

Ian Ross
ianross@remaxone.co.za
083 676 5766

SA NATIONAL REALTORS GROUP

Belinda Livingstone
belinda.livingstone@sanrg.co.za
083 463 8362

SOTHEBYS FOURWAYS

Candice Delpport
candice.d@sothebysrealty.co.za
071 865 2274

TITAN PROPERTY GROUP

Adrian Musper
adrian.m@titan.co.za
065 028 6691

TYSON PROPERTIES

Nastasja Peters
tash@tysonprop.co.za
063 185 4020

MUNYAKA

AFRIQ PROPERTIES

Adedolapo Akinrinade
adedolapo@afriqproperties.co.za
078 259 4262

CHAS EVERITT SANDTON

Angelique van der Merwe
angelique.vdm@everitt.co.za
072 528 8130
Robert Jones
robert.j@everitt.co.za
071 906 0930
Karolina Basinka
karolina.f@everitt.co.za
076 585 3341

DORMEHL PHALANE PROPERTY GROUP

Dylan Coffen
dylancoffen@dpg.co.za
079 742 6197
Wyde Benn
wydebenn@dpg.co.za
079 075 1192

EAGLE DWELL PROPERTIES

Niran Adenigba
niran@eagledwell.co.za
078 443 1931

EXP REALTY

Deidre Bruintjies
deidre.bruintjies@expsouthafrica.co.za
081 889 2458
Martin Gunn
martin.gunn@expsouthafrica.co.za
082 925 3339

HARCOURTS LIFESTYLE MIDRAND

Hjalmar Venter
hjalmar.v@harcourts.co.za
072 468 4228
Karen Harris
karen.harris@harcourts.co.za
072 775 2080
Mcedisi Mabena
mcedisi.mabena@harcourts.co.za
071 030 8552

HARPROP REAL ESTATE

Irmi Reif
irmi@harprop.co.za
082 905 1213

HENRENE PROPERTIES

Irene Petronella Minnaar
irene@henrene.co.za
082 772 5715

JAWITZ PROPERTIES (TURNKEY)

Belinda Hickson
belindah@jawitz.co.za
082 835 0099
Cathie Bester
cathieb@jawitz.co.za
083 616 0348
Gene Witepski
genew@jawitz.co.za
082 455 5210

KENT GUSH PROPERTIES

Elisha Paul
elisha@kentgush.co.za
076 498 0137

LJT PROPERTIES

Lawrence Toendepi
lawrencet@ljtproperties.co.za
076 404 0810

LUXLIV PROPERTY GROUP

Marussia van der Merwe
marussia@luxlivproperty.com
083 384 0618
Joelle McMaster
joelle@luxlivproperty.com
084 020 1111
Victoria Zwane
victoria@luxlivproperty.com
061 690 1170

LWP PROPERTIES

Alma Brown
alma@lwp.co.za
083 947 2726
Brian Anthony Hickson
brianh@lwp.co.za
083 405 0000

NATURAL PROPERTY

Nina Chetty
nina@naturalproperty.co.za
082 560 1373
Slade Brookes
slade@naturalproperty.co.za
083 612 2515

NTSIKIE REAL ESTATE

Ntsikie Mgaya
ntsikie.mgaya@nmrealestate.co.za
079 101 0921

ONLY REALTY GROUP

Soeraya Williams
soeraya.w@orgroup.co.za
082 708 9749

RAWSON PROPERTIES PAULSHOF

Hermann Djiendeu
hermann.dj@rawson.co.za
083 445 0425

REMAX ONE

Ian Ross
ianross@remaxone.co.za
083 676 5766
Cooper van Heerden
cooper@remaxone.co.za
078 931 0744

SOTHEBYS FOURWAYS

Candice Delpport
candice.d@sothebysrealty.co.za
071 865 2274

SUFEMI PROPERTIES

Chantelle Mhlanga
chantelle@sufemiproperties.co.za
079 109 0318

TYSON PROPERTIES

Nastasja Peters
tash@tysonprop.co.za
063 185 4020

THE POLOFIELDS

AFRIQ PROPERTIES

Adedolapo Akinrinade
adedolapo@afriqproperties.co.za
078 259 4262

BOTHMA AND CO REAL ESTATE

Vicky-Lee Coffen
vickylee@bothmandco.com
061 615 3248
Winnie Bothma
winnie@bothmandco.com
082 259 9492

CHAS EVERITT MIDRAND

Phiwe Myeza
phiwe@everitt.co.za
082 710 3463

CHAS EVERITT SANDTON

Angelique van der Merwe
angelique.vdm@everitt.co.za
072 528 8130
Babalwa Yakopi
babalwa@everitt.co.za
079 177 8513
Lulama Konza
lulama.konza@everitt.co.za
064 515 6126

DORMEHL PHALANE PROPERTY GROUP

Dylan Coffen
dylancoffen@dpg.co.za
079 742 6197
Wyde Benn
wydebenn@dpg.co.za
079 075 1192

EAGLE DWELL PROPERTIES

Niran Adenigba
niran@eagledwell.co.za
078 443 1931

EXP REALTY

Deidre Bruintjies
deidre.bruintjies@expsouthafrica.co.za
081 889 2458
Martin Gunn
martin.gunn@expsouthafrica.co.za
082 925 3339
Bryn Milambwe
bryan.milambwe@expsouthafrica.co.za
074 042 0311

GALETTI COMMERCIAL REAL ESTATE

David Dawson
david.dawson@galletti.co.za
082 385 2897

GLOBAL EXCLUSIVE PROPERTIES

Fungai Ngehama
fungai@globalexclusive.co.za
072 860 4499

HARCOURTS LIFESTYLE MIDRAND

Candice James
candice.james@harcourts.co.za
074 134 6459
Karen Kruger
karen.kruger@harcourts.co.za
072 603 2320

HARPROP REAL ESTATE

Irmi Reif
irmi@harprop.co.za
082 905 1213

JAWITZ PROPERTIES (TURNKEY)

Belinda Hickson
belindah@jawitz.co.za
082 835 0099
Cathie Bester
cathieb@jawitz.co.za
083 616 0348
Sabine Warren
sabinew@jawitz.co.za
082 344 7405

KELLER WILLIAMS EDGE

Uhuru Matlhaji
uhuru.matlhaji@kwsa.co.za
078 959 9407

KELLER WILLIAMS EXPLORE

Diana Musara
diana.musara@kwsa.co.za
082 900 2329

KENT GUSH PROPERTIES

Elisha Paul
elisha@kentgush.co.za
076 498 0137

LUXLIV PROPERTY GROUP

Marussia van der Merwe
marussia@luxlivproperty.com
083 384 0618
Joelle McMaster
joelle@luxlivproperty.com
084 020 1111
Victoria Zwane
victoria@luxlivproperty.com
061 690 1170

LWP PROPERTIES

Alma Brown
alma@lwp.co.za
083 947 2726
Brian Anthony Hickson
brianh@lwp.co.za
083 405 0000

MANDATED PROPERTY GROUP

Pam Bingo
pam@mandated.co.za
079 216 7800

NATURAL PROPERTY

Nina Chetty
nina@naturalproperty.co.za
082 560 1373
Slade Brookes
slade@naturalproperty.co.za
083 612 2515

NTSIKIE MGAYIYA REAL ESTATE

Ntsikie Mgaya
ntsikie.mgaya@nmrealestate.co.za
079 101 0921

OBM PROPERTIES

Refilwe Nsibande
refilwe@obmproperties.co.za
073 205 1802

O-YES PROPERTIES

Nalini Bageloo
nalini@o-yes.co.za
083 287 5624

Waterfall City Resale Agent Panel

PLATINUM RESIDENTIAL

Graeme Bunyard
graeme@platinum.co.za
083 882 5861

RAWSON PROPERTIES PAULSHOF

Hermann Djiendeu
hermann.dj@rawson.co.za
083 445 0425

REMAX ONE

Ian Ross
ianross@remaxone.co.za
083 676 5766
Cooper van Heerden
cooper@remaxone.co.za
078 931 0744

REMAX ONE HUNDRED

Jennifer Ramsay
jennyramsay@remax-onehundred.co.za
082 880 6221

SA NATIONAL REALTORS GROUP

Erika de Groot
erika.degroot@sanrg.co.za
082 743 3180
Belinda Livingstone
belinda.livingstone@sanrg.co.za
083 463 8362

SOTHEBYS FOURWAYS

Christopher Stewart
chris.s@sothebysrealty.co.za
084 402 9543

SUFEMI PROPERTIES

Chantelle Mhlanga
chantelle@sufemiproperties.co.za
079 109 0318

TYSON PROPERTIES

Nastasja Peters
tash@tysonprop.co.za
063 185 4020

WE TRADE PROPERTY

Wendy van Heerden
wendyvh@wetradeproperty.co.za
083 443 2231

ELLIPSE TOWERS

AFRIQ PROPERTIES

Adedolapo Akinrinade
adedolapo@afriqproperties.co.za
078 259 4262

CHAS EVERITT SANDTON

Angelique van der Merwe
angelique.vdm@everitt.co.za
072 528 8130
Robert Jones
robert.j@everitt.co.za
071 906 0930
Karolina Basinka
karolina.f@everitt.co.za
076 585 3341

DORMEHL PHALANE PROPERTY GROUP

Dylan Coffen
dylancoffen@dpg.co.za
079 742 6197
Wyde Benn
wydebenn@dpg.co.za
079 075 1192

EAGLE DWELL PROPERTIES

Niran Adenigba
niran@eagledwell.co.za
078 443 1931

EXP REALTY

Deidre Bruintjies
deidre.bruintjies@expsouthafrica.co.za
081 889 2458
Martin Gunn
martin.gunn@expsouthafrica.co.za
082 925 3339

F.G. LATTO

Fraser Gourlay
fraser@fglatto.co.za
072 767 7489
Noksie Gourlay
noksie@fglatto.co.za
078 332 6111
Susan Kruger
susan@fglatto.co.za
072 956 8311

HARCOURTS LIFESTYLE MIDRAND

Hjalmar Venter
hjalmar.v@harcourts.co.za
072 468 4228
Karen Kruger
karen.kruger@harcourts.co.za
072 603 2320

HARPROP REAL ESTATE

Irmi Reif
irmi@harprop.co.za
082 905 1213

JAWITZ PROPERTIES (TURNKEY)

Belinda Hickson
belindah@jawitz.co.za
082 835 0099
Cathie Bester
cathieb@jawitz.co.za
083 616 0348

KENT GUSH PROPERTIES

Nicky Makhathini
nicky@kentgush.co.za
073 832 0219

LUXLIV PROPERTY GROUP

Marussia van der Merwe
marussia@luxlivproperty.com
083 384 0618
Joelle McMaster
joelle@luxlivproperty.com
084 020 1111
Victoria Zwane
victoria@luxlivproperty.com
061 690 1170

LWP PROPERTIES

Alma Brown
alma@lwp.co.za
083 947 2726
Brian Anthony Hickson
brianh@lwp.co.za
083 405 0000

NTSIKIE MGAYIYA REAL ESTATE

Ntsikie Mgayiya
ntsikie.mgayiya@nmrealestate.co.za
079 101 0921

REMAX ONE

Ian Ross
ianross@remaxone.co.za
083 676 5766
Cooper van Heerden
cooper@remaxone.co.za
078 931 0744

TYSON PROPERTIES

Nastasja Peters
tash@tysonprop.co.za
063 185 4020

VELICIAE LUXURY REAL ESTATE

Kimlynn Kemp
kimlynn@veliciae.com
082 250 8667

WATERFALL VIEW

DORMEHL PHALANE PROPERTY GROUP

Dylan Coffen
dylancoffen@dpg.co.za
079 742 6197
Wyde Benn
wydebenn@dpg.co.za
079 075 1192

EXP REALTY

Deidre Bruintjies
deidre.bruintjies@expsouthafrica.co.za
081 889 2458
Martin Gunn
martin.gunn@expsouthafrica.co.za
082 925 3339

HARCOURTS LIFESTYLE MIDRAND

Hjalmar Venter
hjalmar.v@harcourts.co.za
072 468 4228
Karen Kruger
karen.kruger@harcourts.co.za
072 603 2320

JUST PROPERTY HERITAGE

Ally Mafela Ndou
allyn@just.property
076 048 2657

NTSIKIE MGAYIYA REAL ESTATE

Ntsikie Mgayiya
ntsikie.mgayiya@nmrealestate.co.za
079 101 0921

PIVOTAL PROPERTIES

Elias Ngoma
elias@pivotalproperties.co.za
083 200 7100

PLUS GROUP PROPERTIES

Queen Mtsweni
queenm@plusgroup.co.za
079 724 3728

REMAX CAPITAL

Amanda Katergerakis
amanda@remaxcapital.co.za
082 376 9473

REMAX ONE

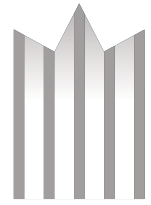
Ian Ross
ianross@remaxone.co.za
083 676 5766

TYSON PROPERTIES

Nastasja Peters
tash@tysonprop.co.za
063 185 4020



An updated list is also available on the Waterfall City Website and Community Portal.
For any queries, contact: agents@waterfall.co.za



TYSON
PROPERTIES

**A PROPERTY
SEARCH CAN
ONLY TAKE
YOU SO FAR,**

**but we will
take you home.**

**Grab our special offer
at JUST 2.5% + VAT!**

**LET'S TALK
WATERFALL CITY**

Nastasjia Peters

063 185 4020 

tash@tysonprop.co.za 

REMEMBER TO SUPPORT YOUR LOCAL RESTAURANTS WHEN YOU FEEL LIKE A NIGHT OUT!

JUNE RESTAURANT COMPETITION

for our Waterfall City residents

The question for this month's competition:
Which initiative provided learners with high-quality, 100% recycled and recyclable school shoes?

Please email your answer along with your full name, your cell number, your residential development name and your stand or apartment number, detailing 'Waterfall City Restaurant Competition' in the subject line, to: competitions@eiapublishing.co.za. The winner will receive a R500 meal voucher from one of our participating restaurants.

Terms and Conditions:

1. Vouchers cannot be exchanged for cash.
2. Portions of the monetary value of the voucher cannot be refunded as "change".
3. Bookings need to be made in advance with the restaurant detailed on the voucher.
4. Service charges/gratuities are not included, regardless of any balance left over after the meal.
5. Vouchers will be numbered. Please provide your voucher number when you make your reservation.
6. The competition is open to all Waterfall City residents over the age of 18.
7. Indemnity: The publishers, Waterfall City and any other associated parties are not responsible for the fulfilment of the service from the restaurant once the prize has been awarded.
8. The winner will be notified by email.



PHOTO BY EMMA HOUGHTON ON UNsplash

CONGRATULATIONS TO: Lilly Pakkiri, Jabulane Zondo and Shanna Young, our May winners of a R500 voucher each.



Where every
Bite is a
Masterpiece



Istanbul Kebab Melrose Arch
010 023 2700
Shop 5, The Arch, Melrose
Square, The High St, Melrose,
Johannesburg, 2076

Istanbul Kebab Sunninghill
011 051 4781
Village Shopping Centre,
97 Edison Cres, Sunninghill,
Johannesburg, 2191

<https://istanbulkebab.co.za/>



MIOSSO
SAVOUR TURKISH LUXURY

For More Information :  010-634-5777  70 Rivonia Rd, Sandhurst



ST PETER'S
PREP SCHOOLS

EXPERIENCE THE **ST PETER'S DIFFERENCE**

Ahead of the Game, Behind Every Child

ENROLMENT ENQUIRIES

PRE-PREP
Gr 000 – 00

BOYS PREP SCHOOL
Gr 0 – 7

GIRLS PREP SCHOOL
Gr 0 – 7

011 705 3423 | admissions@stpeters.co.za | tours@stpeters.co.za

www.stpeters.co.za

BEYOND THE SALE



"It has been 5 years since I bought my home and LWP still reaches out to see if I need anything. That kind of care is rare."

— Waterfall City Homeowner

Since 2008 we have helped hundreds of families find a home where memories grow and investments flourish. Our promise does not end at registration: from market-value updates to vetted contractor referrals we stay by your side long after the keys change hands. Explore four carefully selected Waterfall City residences priced between R6.295 million and R12.99 million and discover how genuine care, deep local insight and unwavering integrity have made LWP the estate's most trusted boutique agency.

FEATURED PROPERTIES



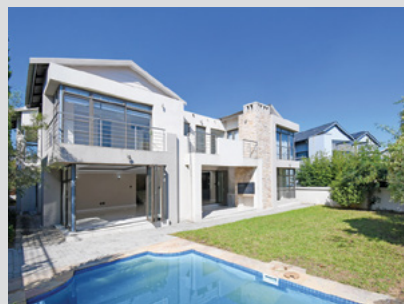
FOR SALE
5 Bedroom House in
Waterfall Country Estate
R12,990,000



FOR SALE
4 Bedroom House in
Waterfall Country Estate
R9,950,000



FOR SALE
5 Bedroom House in
Waterfall Country Estate
R9,500,000



FOR SALE
4 Bedroom House in
Waterfall Country Estate
R6,295,000

LWP
PROPERTIES

A legacy of trust
SINCE 2008

Brian Hickson 083 405 0000 • 011 468 5900

FFC 202 326 195 7 • Registered with PPRA



JOIN OUR
FAMILY OF
SATISFIED
HOMEOWNERS