



**WATERFALL  
CITY**

**JAN/FEB 2026**



# **WATERFALL CITY NAMED AFRICA'S BEST MASTERPLAN**

Looking ahead:  
Hello 2026!

New Field Guide  
update

Get ready for  
Waterfall City Junction



# ONE X3.

3 EXPRESSIONS.



THE BMW X3



THE BMW X3  
PURE DESIGN



THE BMW X3  
RUGGED

One exceptional SUV. Three distinct expressions. Whether your world is urban, refined or built for adventure, there's a BMW X3 crafted for the way you live. Discover the BMW X3 range at BMW Midrand.

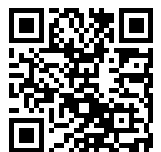
**Scan the QR code to book your test drive.**

## **BMW Midrand**

Cnr Allandale & Pretorius Rd Waterfall Ridge, Vorna Valley

Tel. 011 697 4700

[www.bmw.co.za/midrand](http://www.bmw.co.za/midrand)



# Contents

## NEWS

---

- 2** Welcome
- 4** Looking ahead in Waterfall City: What's in the mix for 2026
- 10** Waterfall City named Africa's Best Masterplan
- 14** Attacq breaks ground on Waterfall City Junction
- 16** The definitive guide to Waterfall City's Natural Heritage
- 55** Waterfall City Contacts

## LIFESTYLE

---

- 18** New in the Hood
- 21** Must Do
- 60** Restaurant Competition for Waterfall City Residents

## FINANCE

---

- 27** PSG Wealth: Discover your savings superpower TFSAs vs RAs – which one suits your needs?

## HEALTH

---

- 32** Netcare: Second chance at life – Pro bono teamwork fixes baby girl's heart defect

## MOTORING

---

- 34** Driving customer satisfaction – Bidvest McCarthy Woodmead
- 38** Driven to Evolve – Changan Motors

## HOME FRONT

- 36** Not just a pretty space – Intentional Design for elevated living in 2026
- 42** Transform your space with Wolkberg
- 52** Reading guide for adults, teens and tweens
- 54** Waterfall City Home Service Providers and Classifieds
- 56** Waterfall City Resale Agent Panel

## EDUCATION

---

- 44** St Peter's College – Where care meets excellence and potential becomes achievement

## TRAVEL

---

- 47** Namibia, where time hold its breath



**Bonds!!!**

**Interest Rate Savings Of More Than R300 000 (Over 20 Years)  
Rebate/Cashback Of Up To R55 000**



T's and C's Apply

**Kgoshi**  
 **064 539 2613**

  
WATERFALL  
CITY

**Balwin**  
PROPERTIES®

# LOOKING AHEAD

## Waterfall City: What's in the mix for 2026

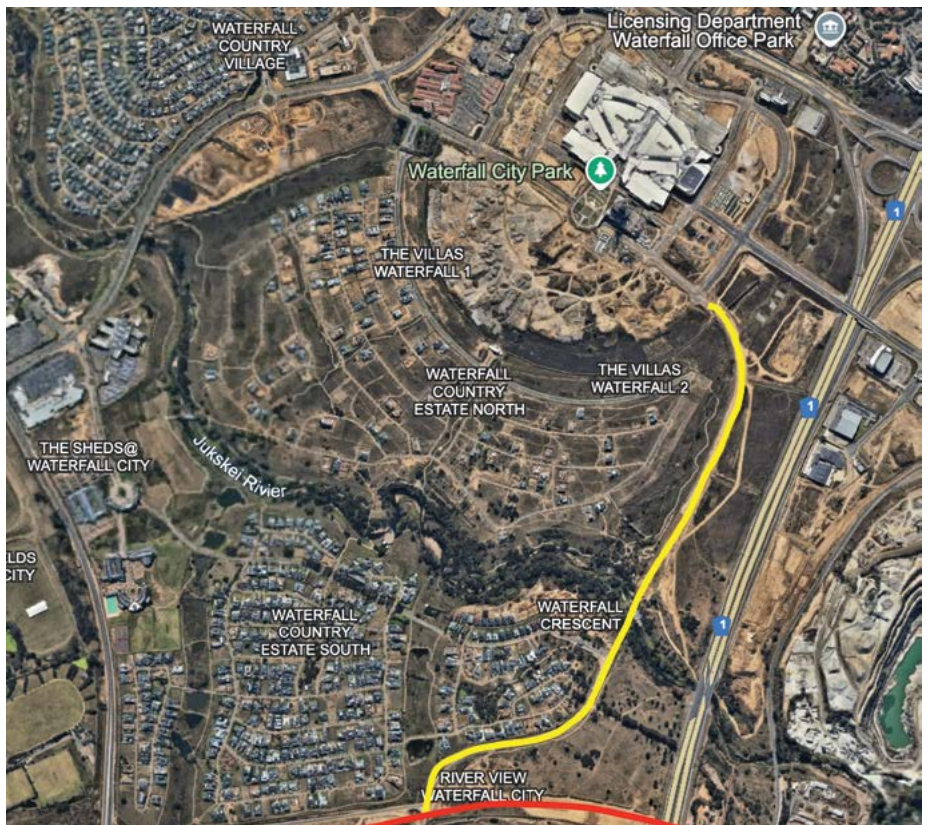
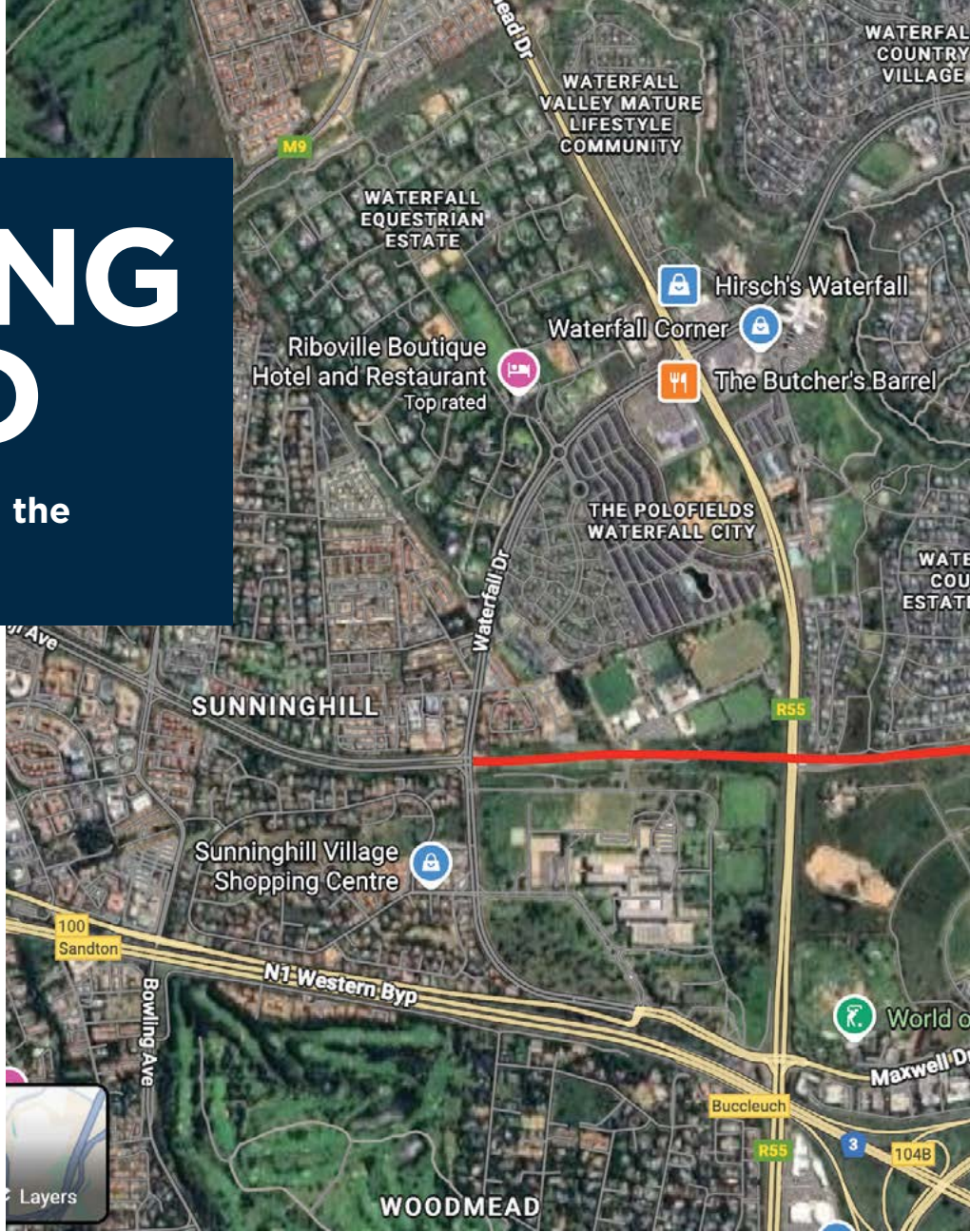
**A**s we kick off a new year, we chat to Willie Vos, CEO of Waterfall City Management Company (WCMC), to find out what 2026 may hold for the Waterfall City development.

### Awards

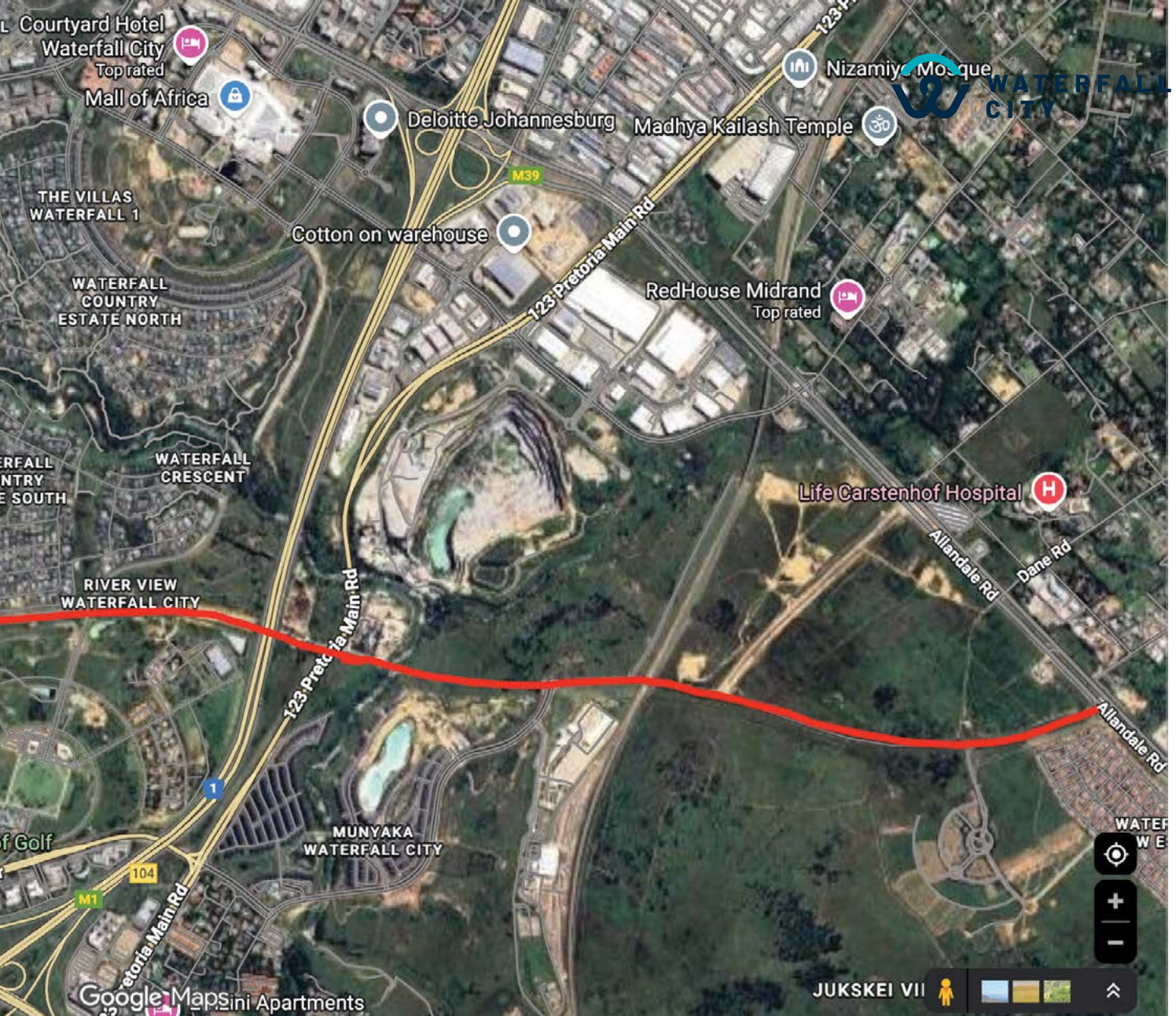
Firstly, we are still over the moon about the *Best Masterplan in Africa 2025-2026* award that Waterfall City won in London in January. This is the second year in a row that we have been honoured with this accolade, and we couldn't be prouder! You can read all about it in our cover story.

### Tech

Having said that, the biggest news of the year must be the imminent launch of Waterbucks – Waterfall City's app-driven smart rewards



Smart traffic lights



programme. Due to launch later this year, Waterbucks will be the world's first geo-fenced loyalty programme, and we cannot wait for you to experience it! Be sure to watch this space and sign up as soon as you can, to be first in line to get rewarded for choosing Waterfall City.

In other tech news, plans are in the pipeline to make more traffic lights in the CBD 'smart' this year. Currently, only those on Allandale and Lone Creek can boast this tech, but the intersections at Ellipse and the Courtyard Hotel, as well as those in front of the Nexus and Ingress developments, will now also get smart traffic lights, able to determine the stacking distance in each lane and allocate longer green-light times for lanes that require it, thereby alleviating congestion.

### All roads lead to Waterfall City

Speaking of roads... You may have noticed that construction of the long-awaited K60 has finally commenced. This is a huge infrastructure project with an estimated value of around R450 million and a projected completion date of January 2028. The dual carriageway K60 will involve the construction of two bridges, ultimately connecting Van der Bijl in Sunninghill to Allandale Road on the eastern border of Waterfall City. It will run past Saint Peter's school and Megawatt Park, past the back of Waterfall Country Estate South, with a new bridge constructed across the N1, and another bridge to be built over the Jukskei River. It will then run north of the Munyaka residential estate and south of the quarry, finally connecting with the existing road that runs underneath

the Gautrain bridge and links in with Allandale. The K60 will also open up the routes between Woodmead Drive and Maxwell Drive, where it intersects with Van der Bijl.

The section highlighted in yellow on the accompanying map illustrates the planned Simlak Drive extension, which will run northward across the Jukskei River to connect the new K60 and Waterfall Country Estate with the CBD. Once completed, this route will provide a seamless link to major destinations including the Mall of Africa and Allandale Road.

Initially, the construction works will cause disruption to traffic flow, but with a little patience, we can all look forward to significant alleviation of traffic congestion in the entire area within the next two years.



*Waterfall Country Village Estate and the attenuation dam*



## Energy and water

Residents of The Polofields can look forward to back-up power via solar panels and batteries later this year, while a huge 242m<sup>3</sup> back-up water tank is currently being constructed, which will provide all 1,512 apartments with at least one day's water supply in case of outages. The latter will be completed by no later than the end of February.

Additional back-up water is also planned for the high-density Munyaka and Kikuyu residential developments, and there will be more rainwater harvesting at all new construction sites.

Attacq is investing heavily in energy and water security. Across its portfolio, it has installed 3.2-million litres of water backup capacity so far, with a further 3.9-million litres being rolled out, aiming at a 5-day water-resilience across the CBD in the event of a service interruption. We are, however, dependent on Joburg Water and Rand Water for the ultimate solution to the city's water problems. Attacq and WCMC are in constant discussions with these entities to offer our assistance to alleviate the pressure they are under to increase the water capacity to service our city.

It is important to note that the attenuation dam in front of the Waterfall Country Village Estate Clubhouse is, in fact, a regional attention dam, which means it is the catchment dam for the stormwater of the entire area. With all this stormwater comes a lot of silt, which is very costly to remove every few years. In September last year, the Residents Association spent R2,3 million to desilt the dam, but has now appointed an engineering firm to look at a more sustainable solution. More news on this to follow.

And finally, Calgro M3 will start with the construction of a new litter trap on the Bankenveld development across from the Marlboro Gautrain station this year, which will hopefully reduce

## Waterfall City News

the amount of litter in the Jukskei River before it hits the ingress into Waterfall City at the Kikuyu residential development.

### Resi news

On that point, we will be adding 40 new stands to Waterfall Country Village Estate behind the BP petrol station, and we plan to start servicing these stands soonest this quarter. This will give latecomers a final chance to buy a plot and build their own free-standing homes in this popular development.

Over at Munyaka, Balwin Properties will start construction of another Montessori school, due to open in January 2027, while in the last quarter of 2026, they will break ground on a 1,128-unit new residential development, Riverview, just outside Gate 7 of Waterfall Country Estate South. Meanwhile, Attacq is due to commence construction of its 19-storey Aspire luxury apartment tower in the second half of 2026.



Aspire

*Munyaka Drive landscaping to be irrigated with borehole water*



By the end of November last year, more than 60% of the units in this tower were already sold out, reflecting a growing appetite for luxury living.

### Commercial

Attacq broke ground on Waterfall City Junction at the end of last year, which is set to become a new growth node in the city, with a lot of warehousing and small offices. Construction of the first 22,000m<sup>2</sup> warehouse is already underway. You can also read all about this new commercial venture in this issue of our magazine.

### Landscaping

Balwin has approved the sinking of a borehole to irrigate Munyaka Drive with borehole water instead of municipal water, while Attacq has undertaken to do some landscaping on Allandale Road, from Lone Creek to Waterfall Drive. And finally, the Ozone water treatment plant, which we use for irrigating all the landscaping on Waterfall Drive, will be upgraded with alternative tech this year, for better results.



*Construction of three new restaurants at the Polofields Shopping Centre is almost complete*

### Amenities

Exciting news for foodies is that three new restaurants are currently being built at the Polofields Crossing shopping centre, due to open in June. We have it on good authority that these will include a Le Parc by tashas, with a whimsical French style and a different menu to tashas in Mall of Africa. On the other side of town, a hotel and conference facility are being planned on the eastern side of the mall, with Attacq currently

negotiating with potential operators. Lastly, construction of a small new mosque between the Waterfall Corner shopping centre and The Sheds cluster housing complex will begin in the first quarter of this year and will take 24 months to complete.

Exciting plans and times ahead as we continue to build a smart city so admired, safe and sustainable, there is no better place to live, work, play and prosper.



# WATERFALL CITY NAMED AFRICA'S BEST MASTERPLAN



Willie Vos, CEO of Waterfall City Management Company (WCMC) and Tertia du Toit, Communications Manager at WCMC accepting the Best Masterplan Africa 2025-2026 accolade



Best Masterplan Africa 2025-2026 award ribbon

**W**aterfall City has done it again! For the second consecutive year, the development has received the *Best Masterplan Africa* award from the International Property Awards Association. This 2025-2026 Africa title follows Waterfall City's win of the South African Masterplan award in October last year, emphasising the success behind the world-class urban design framework that is driving this thriving smart city.

The award was presented to Waterfall

City Management Company (WCMC) at the lavish annual International Property Awards ceremony held at the prestigious Savoy Hotel in London on 16 January.

The Masterplan category was specifically created in 2024 by the International Property Awards association for large-scale developments of more than 20,000m<sup>2</sup>. Property types within this category can range from a single building to a complex of buildings or a district

within a town/city. They must include at least five of the following uses: residential, retail, commercial, leisure, cultural, institutional, public service, and industrial. Award entries were judged based on criteria ranging from design and land use, to architecture, appearance and finish, and sustainability, energy conservation and innovation.

Willie Vos, CEO of Waterfall City Management Company, said, "One of the key criteria in the Masterplan



An aerial view of Waterfall City



The annual International Property Awards ceremony was held at the Savoy Hotel, London



Regional Masterplan winners shortlisted for the International award

award entry is placemaking, which is all about people-centric design and enhancing public life. Being named *Best Masterplan Africa 2025-2026*, speaks to our commitment to fulfilling Waterfall City's mission of creating a place where people love to be."

The International Property Awards – the world's largest, most widely recognised property awards programme – are now in their 33<sup>rd</sup> year of celebrating the very best projects and professionals in the industry

across more than 50 residential and commercial categories. Judged by an independent panel of over 90 industry experts, and chaired by House of Lords members, regional heats are held for Africa, Arabia, Europe, Canada, Central & South America, the Caribbean, the USA, the UK and Asia Pacific.

The highest-scoring, five-star regional winners in each category are then shortlisted and rejudged to determine the 2026 Best International winners. While Waterfall City was named the

world's best Masterplan in 2025, this accolade went to Mangrove Estate in Umm Al Quwain in the United Arab Emirates this year.

Concluded Vos, "I am very proud of this award and recognition! Proud of the excellent work that numerous teams involved in Waterfall City are delivering, and also proud of flying South Africa's flag on the world stage. Huge congratulations to all involved, and to our partners and stakeholders on another outstanding accomplishment."



Flexibility that  
fits your vision.

[waterfallcity.co.za](http://waterfallcity.co.za)



**WATERFALL  
CITY**



**Gateway  
East  
pre-letting  
now**

Gateway East. The new landmark development at Waterfall City. A connected, flexible and future-ready destination for business.

**Connect with our leasing team today.**

Leasing  
**Justin Smith**  
**082 362 0800**

Broker Enquiries  
**Lunga Sikutshwa**  
**083 200 2576**

Attacq Management Services Proprietary Limited, a wholly owned subsidiary of Attacq Limited, is registered with the PPRA and holds a fidelity fund certificate and trust account in terms of the Property Practitioners Act 22 of 2019.



Attacq breaks ground on

# WATERFALL CITY JUNCTION

**A**ttacq recently marked a major milestone with the official groundbreaking ceremony of Waterfall City Junction, held on site at the end of last year. Attacq CEO Jackie Van Niekerk performed the honours by driving the excavator and officially breaking ground, a symbolic moment signalling the start of one of Gauteng's most ambitious logistics precinct developments.

Waterfall City Junction forms part of Attacq's broader vision for integrated urban development, striking a balance between accessibility, functionality, and sustainability, in line with its precinct-led strategy in which logistics continue to be a key driver of growth.

Located within the greater Waterfall City node, Waterfall City Junction occupies a key position for logistics operations in the region. Approximately 10 kilometres from Sandton, the precinct offers direct access to the N1 highway and is conveniently connected to Allandale Road and the K113, which is set to become the new north-south arterial road and a major game changer for mobility and logistics efficiency in the region.

"Waterfall City Junction is an investment that will continue to build South Africa's future," says Van Niekerk. "This project reflects our commitment to unlocking opportunity through world-class infrastructure and long-term vision."

"Waterfall City Junction offers logistics operators a prime location with direct access to major highways,

supported by infrastructure that is simply unmatched in this market," says David Oosthuizen, Development Executive at Attacq. "With the K113 now unlocking a major north-south arterial route, and the scale of land becoming available online, we are creating an environment that enables faster turnaround times, lower operating costs, and meaningful long-term growth for leading logistics operators."

The area's transport infrastructure adds further value, with the precinct close to both the Midrand and Marlboro Gautrain stations, providing reliable public transport options for commuters. In addition, O.R. Tambo, Lanseria, and Grand Central airports all fall within a 31-kilometre radius, making Waterfall City Junction a convenient base for businesses that depend on efficient regional and international connectivity.

Waterfall City, as a logistics node, has been highly successful in the past, with the previous three logistics precincts already secured, boasting occupants such as Cotton On, Vantage Data Centers, Plumblink, Amrod, and Cummins. Attacq Ltd is leading the development of Waterfall City Junction, in a joint shareholding with Sanlam Properties (Pty) Ltd. Covering 1.5 million square meters with 600,000m<sup>2</sup> of approved development rights, it is one of the largest infrastructure projects in Gauteng. Bulk infrastructure is already being installed for four of the six planned phases, marking a significant step in unlocking the land. Phase 1 is underway, with a 22,000m<sup>2</sup> speculative warehouse currently under construction.

Phase 1 has already attracted its first logistics client, signalling strong market confidence in the precinct's potential.

Waterfall City Junction reflects a commitment to sustainable development and is designed with water resilience in mind. The land incorporates off-site stormwater systems and a five-day backup water supply for each development. Warehouse roofs are built to support future solar panels, and landscaping will be managed under an environmental plan. Together, these measures reduce the development's ecological footprint and support long-term operational savings and resilience for the occupants.

"Sustainability has become a defining element of property development," adds Oosthuizen. "It is no longer about compliance but about creating spaces that are more resilient and cost-effective over time. Every aspect of Waterfall City Junction has been designed with this in mind."

As part of the broader Waterfall City ecosystem, the new precinct benefits from an established network of residential, retail, and commercial developments, including Mall of Africa and a growing number of corporate headquarters. This integration allows businesses to operate within a managed urban node that already provides comprehensive infrastructure and amenities.

This groundbreaking represents the beginning of a multi-phase development that will reshape logistics capacity in Johannesburg, supported by premium infrastructure and a long-term market-led vision.







# NEW IN THE HOOD

Come and enjoy experiential retail at its finest at the recently reopened Emporio Armani in Mall of Africa. And because we all know that shopping with a great cuppa in hand makes the whole experience even more amazing, why not grab your favourite brew from the new Bootlegger – a locally established coffee roastery that prides itself on offering specialty coffee, sourced the right way!



## Emporio Armani

Emporio Armani has reopened its store at Mall of Africa, bringing Italian elegance and contemporary luxury to South Africa. Known for its sleek designs and timeless appeal, the brand introduces a new, fresh and immersive retail experience inspired by its flagship store in Milan.

The interiors feature soft, neutral tones, with light, modular furnishings spanning a total floor area of 170m<sup>2</sup>. A transparent façade and expansive windows enhance the sense of openness and inclusivity. Ceiling-mounted video panels interact with digital platforms, reinforcing a dynamic, metropolitan atmosphere and highlighting the seamless integration of technology. These LED screens create digital frescoes in motion, with visuals extending across wall displays to create a vibrant interplay of imagery and themes drawn from the latest collections.

Coinciding with the launch, Emporio Armani's latest collections are available in-store. Womenswear channels playful sophistication, using a recurring playing card motif across sharp silhouettes and textured fabrics. The palette shifts from warm neutrals to bold accents, with standout pieces like oversized bow dresses, tailored jackets, and velvet bags. Menswear focuses on understated seduction, featuring long coats, pleated high-waisted trousers, and textured fabrics in earthy hues of cognac and chocolate. Metallic accents, brushed animal prints, and softly tailored cuts add depth to the collection.

**Mall of Africa**  
**Shop 2171, Entrance 5**  
**Upper Level 5**



## Bootlegger

Since its opening in Sea Point, Cape Town in 2013, quality, consistency and sustainability have told the story of Bootlegger. What began as a humble roastery created by three best friends, is now part of a rich South African lifestyle. The brand has expanded to over 100 locations nationwide, including the recently opened branch in Mall of Africa, and growth is set to continue to over 200 cafés by 2028.

“We are all about specialty coffee, sourced the right way,” says team Bootlegger. “Our commitment to quality begins at the origin. We use only 100% Rainforest Alliance Certified beans, sustainably sourced from renowned coffee-growing regions including Costa Rica, Guatemala, and Tanzania. At the heart of our operation is our FSSC-certified artisanal roastery – one of the largest micro roasteries in South

Africa, where we roast between 350 and 400 tonnes of premium coffee each year.”

Visitors can expect a smooth, consistent blend with tasting notes of toasted hazelnut, caramel, and dark chocolate. Every step, from farm to cup, reflects their dedication to quality, sustainability, and innovation.

Quality coffee, a vibrant atmosphere, and community spirit has firmly established Bootlegger as a beloved fixture in South Africa’s coffee culture.

**Mall of Africa**  
**Shop 1238, Entrance 7**  
**Lower Level 3**



# PLATINUM RESIDENTIAL



## THANK YOU FOR TEN YEARS OF TRUST

For the past ten years, Platinum Residential has had the privilege of serving the Waterfall City community. During this time, we have completed over 300 property transactions, each one representing a moment of trust placed in us by a homeowner or buyer. We are deeply grateful to every client who invited us into their journey, whether to sell a home, find one, or return to us again through referrals and continued support.

### WITH GRATITUDE, AND LOOKING AHEAD

As Waterfall City has grown into the exceptional precinct it is today, we are proud to have grown alongside it, tracking its shifts, cycles, and buyer behaviour year after year. Today, our role in the market reflects a responsibility we take seriously: with a market share exceeding 55% of all homes sold in 2025, we remain the most active selling agency in Waterfall City. Our commitment remains unchanged: to serve this community with integrity, transparency and respect, and to continue earning the trust that has allowed us to do this work for the past decade.



**Andrew Pearse**  
Waterfall Country  
& Village Estates  
083 652 8888



**Steven McLaren**  
Waterfall Country  
& Village Estates  
083 233 8888



**Roger Snelgar**  
Waterfall Mature  
Lifestyle Estates  
083 307 9463



**Melanie Pearse**  
Waterfall Country  
& Village Estates  
083 390 0000



**Annalize Morris**  
Waterfall Country  
& Village Estates  
082 347 7305



**Graeme Bunyard**  
Waterfall Vacant  
Land & Apartments  
082 882 5861



# MUST DO

**F**ebruary is officially here, and we're bringing all the heart, hustle, and high fashion to 2026! Whether you're planning the ultimate Valentine's date or just looking for a reason to treat yourself,

we've got the perfect lineup. From incredible restaurant deals for your Valentine's night out and pop-up fashion to a movie magic competition and special programme celebrating our wonderful Senior Citizens.

## BE OUR VALENTINE

### Love is in the air

Join us at Polofields Crossing or Waterfall Wilds on 14 February for a special Valentine's Day treat while you shop. Enjoy a little extra love as you browse your favourite stores to find the perfect something for your Valentine. Or indulge in a delicious lunch while soaking up the beautiful surroundings. Whether you're celebrating with your loved one or bringing the whole family, it's the perfect way to make your day of love memorable.

14 February

Polofields Crossing 09:00 – 12:00

Waterfall Wilds 13:00 – 16:00



### Love the glow at SkinPhD

Treat yourself (or someone really special) this February to the SkinPhD glow-boosting special of any three treatments for only R1,100, and save up to R410!

Choose from: Hollywood Wax, Cut & Blow Wave, Acrylic/Gel Overlay, Pedicure with Polish, Relax & Rebalance Treatment, Back, Neck & Shoulder Massage.

Bring a guest and you BOTH receive a FREE Vitatherapy Serum (30ml), valued at R450. Go on, share the love!

SkinPhD Waterfall Corner

010 596 8942

WhatsApp 079 062 8928

Valid until 28 February

Ts & Cs apply



### Mica wants to show you some love

If you enjoy shopping at Mica, you can now earn points while doing it. Join the Mica Loyalty Programme and enjoy rewards, exclusive discounts and personalised offers every time you shop. Sign up in-store today and start earning points with every purchase.

Mica Paint & Hardware

Polofields Crossing

010 017 4677

## WINE & DINE YOUR VALENTINE

### Gigi's Valentine's Chef's Table

Celebrate love with an unforgettable dining experience at Gigi's in Waterfall Corner. Treat your special someone to an intimate Chef's Table experience, designed for small, exclusive gatherings of up to 10 guests. Enjoy a decadent 6-course menu expertly paired with drinks, crafted to make the evening truly special.

14 February  
R1,450 per person  
Gigi's, Waterfall Corner  
Bookings essential:  
010 443 9711  
Ts & Cs apply



### Valentine's dinner at the Protea Restaurant

Enjoy a welcome drink, delicious 5-course set-menu meal and a bottle of house red or white wine when celebrating Valentine's Day at the Protea Restaurant at the Courtyard Hotel Waterfall City. It's all about love, laughter and making memories.

14 February 18:30  
R820 per person  
Protea Restaurant  
Courtyard Hotel Waterfall City  
Bookings essential:  
cywaterfall.fb@citylodgehotels.com  
Ts & Cs apply



### Valentine's with a view

Share a starter and dessert with pizza in between and take in the stunning views around Waterfall City at the Highline Restaurant, while enjoying a bottle of wine.

14 February  
R510 per couple  
Highline Restaurant  
Courtyard Hotel Waterfall City  
Bookings essential:  
cywaterfall.fb@citylodgehotels.com  
Ts & Cs apply

### Say I love you with breakfast instead

Spoil your Valentine to a cheeky brekkie this February with Vovo Telo's Valentine's Month Breakfast Specials. Enjoy an all-day breakfast with coffee on the house for only R100 p/p, Monday to Friday. Or go big on the weekend with Mimosas and a full English Breakfast for only R280 p/p, from 10:00 until noon every Saturday and Sunday, including Valentine's Day weekend (hint hint).

Vovo Telo  
Waterfall Wilds  
Valid until 28 February  
Ts & Cs apply



## The ultimate Valentine's Day Escape

Book your Valentine's Day Escape at The Courtyard Hotel, with a romantic 5-course set menu dinner, followed by accommodation for the night, plus a scrumptious breakfast in the morning. You'll even find a bottle of bubbly in your room (just to add a little fizz to the evening).

14 February  
 Courtyard Hotel Waterfall City  
 Bookings essential:  
[cywaterfall.fb@citylodgehotels.com](mailto:cywaterfall.fb@citylodgehotels.com)  
 Ts & Cs apply



**CELEBRATE LOVE,  
EFFORTLESSLY**

*Book your Valentines Day Escape*

5 - Course Romantic Set Menu Dinner  
 Accommodation & Breakfast  
 Bottle of bubbly for the room

Limited Space available  
 Booking Essential  
 Email [cywaterfall.fb@citylodgehotels.com](mailto:cywaterfall.fb@citylodgehotels.com) for bookings  
 T&C's Apply

**COURTYARD  
HOTEL**

## WATERFALL CITY PARK

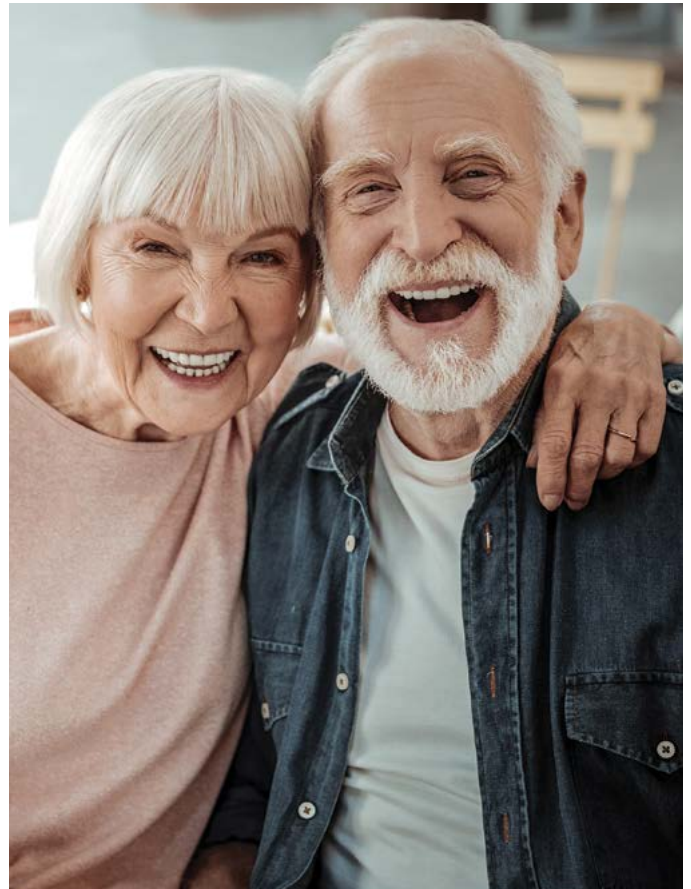
### Fitness on the beat

This vibrant health and fitness experience brings together fans, fitness enthusiasts and personalities for a morning packed with fun workouts, music and community vibes. Whether you're a fitness fanatic or just looking for motivation to start moving, this event is designed to inspire everyone to live a healthier lifestyle.

14 February  
 07:00 for 07:30  
 Waterfall City Park  
 Register at [social@metrofm.co.za](mailto:social@metrofm.co.za) or  
 WhatsApp MetroFM on 082 503 6274



## CELEBRATING SENIORS



### The Golden Treats Club

Calling all fabulous seniors and retirees  
 – this one's just for you!

The Golden Treats Club is Waterfall Corner's special midweek celebration of the people who know how to enjoy life best.

Each Wednesday, pensioners can enjoy exclusive dining specials, relaxing pamper sessions, and delightful discounts from Waterfall Corner's participating retail stores. Whether it's a long lunch with friends, a little well-earned self-care, or simply a reason to get out and about, there's always something lovely waiting for you.

So come and enjoy great value in great company. We can't wait to welcome you.

Every Wednesday  
 Waterfall Corner  
 Keep an eye on Waterfall Corner's website for weekly specials  
<https://waterfallcorner.co.za/senior-specials/>

## SOOK MALL OF AFRICA



### Hydraulics femme

Blending bold futurism with refined femininity, FEMME is an exclusive women-only luxury fashion concept by Hydraulics, designed to empower women through daring silhouettes, vibrant colours, and experimental materials. Check it out at SOOK Mall of Africa.

13 February – 30 April  
SOOK Mall of Africa

## RESTAURANT SPECIALS

### All-day, every day set menu deals at Lupa

Looking for a fab but affordable date night, night out with the friends or birthday celebration? Then look no further than Lupa's all-day set menu deals (on selected items only). Indulge in two courses for only R259 or three courses for only R299 p/p.

Lupa Osteria Waterfall  
Waterfall Wilds  
066 509 3026



### Mad Mezze Mondays at Nostimo

If it's Monday, you'll be mad not to head straight to Nostimo for their amazing R100 off on any Meze sharing platter for two! Run, don't walk.

Available from 17:00 every Monday  
Nostimo By Mythos  
Waterfall Wilds  
011 517 2349



## MOVIES

### What's on at the movies?

Catch the following blockbusters at Ster-Kinekor, Mall of Africa:  
**6 February:** *Is This Thing On?*  
**13 February:** *Wuthering Heights*  
**13 February:** *GOAT*  
**20 February:** *EPiC: Elvis Presley in Concert*



Book today: [www.sterkinekor.com](http://www.sterkinekor.com)

## WATERFALL CITY COMPETITIONS

### Win movie tickets to GOAT

GOAT is the story of a small goat with big dreams who gets a once-in-a-lifetime chance to join the pros. Tell us which sport he gets to play and you could win 4 movie tickets to watch this action-packed animated movie, starting 13 February at Ster-Kinekor Mall of Africa.



Email your answer to [competitions@waterfallcity.co.za](mailto:competitions@waterfallcity.co.za) along with your name and contact number.

Competition closes 15 February  
Winner announced 18 February  
Ts & Cs apply



# SHOWCASE DAY

7 March 2026  
9h00 - 12h00



OPENING DOORS *to*  
**ENDLESS**  
**| OPPORTUNITIES |**



Early Learning School | Preparatory | College

Evolve Where Every Day is

# LUNCH WITH THE COOL KIDS

Enrol with Evolve Online School  
Grades R-12(AS)



Discover your

# SAVINGS SUPERPOWER

TFSA's vs RA's - which one suits your needs?

By Thomas Berry, Head of Sales at PSG Wealth



Thomas Berry, Head of Sales at PSG Wealth

**W**hether you're saving for retirement, a first home, or your child's education, choosing the right investment vehicle can unlock your financial superpower. Two of South Africa's most powerful savings tools – a Tax-Free Savings Account (TFSA) and a Retirement Annuity (RA) – offer attractive tax benefits but serve different purposes.

Understanding how each one works can help you decide which aligns best with your lifestyle and financial goals.

### **Choose your flexibility level**

A key difference between the two lies in how easily you can access your funds.

TFSA's offer greater liquidity, allowing you to withdraw money at any time without penalties. However, once withdrawn, that portion of your lifetime contribution limit is gone for good – meaning you can't "top it back up" later.

## Waterfall City Finance

RAs, on the other hand, are designed to promote long-term saving discipline. You generally can't access the funds before the age of 55 (except for your savings component in case of emergencies). This structure removes the temptation to dip into retirement savings prematurely – a built-in advantage for those who might otherwise derail their long-term plans.

### Know your limits and growth potential

Both TFSAs and RAs come with annual and lifetime limits, which influence how they can best be used. With a TFSA, you can currently contribute up to R36,000 per year, capped at R500,000 over your lifetime. While contributions aren't tax-deductible, any growth – interest, dividends, or capital gains – is completely tax-free. Contributions in excess of these limits will be taxed at 40%.

RAs work differently. There are no contribution limits, but your annual tax deduction is limited to 27.5% of your taxable income (to a maximum of R350,000 per year). Growth within an RA is also tax-free, but you'll pay tax on both lump sum withdrawals at retirement and your income during retirement.

In terms of growth potential, both vehicles depend on the underlying investments you select – whether that's equities, bonds or unit trusts. Over the long term, the disciplined contributions and tax advantages of both products can significantly enhance your total returns.

### Match the product to your savings mission

Each vehicle serves a unique purpose, but you don't necessarily have to pick one or the other. A TFSA is well-suited for medium-term goals such as saving for a deposit on a home, a child's university fund, or even a financial safety net. Because you can withdraw funds without penalties, it provides flexibility for changing life circumstances.



An RA, in contrast, is purpose-built for retirement. It's particularly valuable for those who don't have access to an employer pension fund, such as freelancers or self-employed individuals. The structured contribution and tax incentives make it an essential pillar of any long-term financial plan.

### Adapting to life stages and income levels

Just as your financial journey evolves, so too should your savings strategy. In your early career, flexibility tends to matter more. A TFSA can help you start building healthy saving habits while still allowing access if life throws you a curveball.

As your income and stability grow, an RA becomes increasingly valuable. You can take advantage of higher contribution limits and tax deductions while locking in long-term benefits.

Ultimately, your savings superpower lies in choosing the right tool for your goals, income and life stage, but the best approach is often to use a combination of both.



# POSTNET

KYALAMI • WATERFALL CORNER • WATERFALL RIDGE



DESIGN AND PRINT WITH US

**POSTNET**  
Copy & print

PostNet Kyalami - Tel: 011 466 6046/7 • Email: kya@postnet.co.za

PostNet Waterfall Corner - Tel: 010 021 5929 • Email: waterfallcorner.admin@postnet.co.za

PostNet Waterfall Ridge - Tel: 010 448 0031 • Email: waterfallridge.admim@postnet.co.za

# TURKISH CARPET GALLERY



SIZE ABSTRACT  
CLASSIC OPTIONS  
IN METRES

7x5  
6x5  
6x4  
5x4  
5x3  
4x3

WASHING, CLEANING AND REPAIR



ABSTRACT

MODERN

CLASSIC



065 604 1999 • 071 648 3050

UPPER LEVEL SHOP 107

KYALAMI CORNER SHOPPING CENTRE

# COLOUR CREATIONS

## Paint Specialists

2K Automotive  
paint now  
available!



We mix  
and match  
quality  
paints of all  
**COLOURS**

**\*FREE DELIVERY**

Unit 10, Kyalami View Business Park, 96 Forssman Close, Barbeque Downs

(011) 466-0065/80 • sales@colourcreations.co.za • Whatsapp us: 079 889 5670

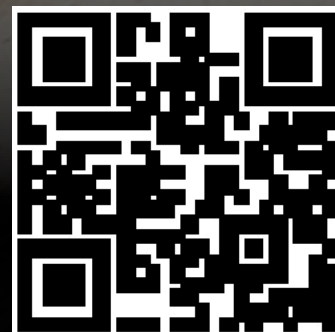


# **DENAGO** **EV**

**ONLY R224 900.00** including vat

“With its sleek design and practical features, Rover XL doesn’t just meet your family’s needs – it does it with style.”

**JETMAN**<sup>®</sup>  
POWER THE FUTURE



[www.denagoev.co.za](http://www.denagoev.co.za)

Office: 012 012 6054

Phone: 071 313 0851 | 074 818 0886 | 084 977 1775



**Netcare Sunninghill  
Hospital**

*Before her operation, Xihluke Mashimbyi struggled to feed and did not gain weight as a healthy baby should.*

# SECOND CHANCE AT LIFE

**Pro bono teamwork fixes baby girl's heart defect**

**A** baby girl born prematurely at 30 weeks has overcome a life-threatening congenital heart defect, thanks to medical teamwork that answered the prayers of her parents and their community.

"Xihluke's name means 'unique', and she is our miracle angel. She is our second-born child, but it was a first for us to experience such health problems with a baby," says her mother, Oddette.

After a harrowing health journey, Xihluke Mashimbyi is now full of

energy since doctors from the state-of-the-art Maboneng Heart and Lung Institute at Netcare Sunninghill Hospital provided their expertise pro bono to close the hole in her heart in an operation made possible by the Netcare Foundation.

"From birth, Xihluke had to remain on a ventilator in the intensive care unit, where I visited her every day to express milk," Oddette remembers.

Xihluke's parents grew increasingly concerned as she struggled to gain weight as a healthy baby should. "If I fed her too much, she would vomit, so I spent ages feeding her tiny amounts, just trying to get her to eat enough," her mother recalls.

"Tests at Steve Biko Academic Hospital showed our daughter had a hole in the wall separating the chambers of her heart, known as a ventricular septal defect. We were scared," adds Xihluke's father, Dzunisani.

"Our church community in Soweto was praying for our baby, and most of the people we know had never heard of something like this in such a small child," Oddette shares.

At Xihluke's next check-up, the fears of her parents and doctors were confirmed; the hole in the baby girl's heart had not closed to resolve



*Relieved mother Oddette and registered nurse Sr Dudu Raseboka are pictured with Xihluke as she recovers at Netcare Sunninghill Hospital.*



*Just three days after her procedure, Xihluke was well enough to go home.*



the problem, as is sometimes the case. Instead, Xihluke would need a specialised heart operation. "It was an incredibly difficult time for us. Hearing the word 'operation' makes things sound worse, but we knew it was the only hope for our daughter," Dzunisani says.

"The problem of heart disease in children is huge, and the number of specialists available who can treat it is unfortunately very small. Xihluke desperately needed the procedure, and we applied to the Maboneng Foundation and the Netcare Foundation to see whether they could help fast-track it in the private sector," says paediatric cardiologist Professor Lindy Mitchell of Steve Biko Academic Hospital.

Cardiothoracic surgeon and co-founder of the Maboneng Heart and Lung Institute, Dr Erich Schürmann, explains that the nature of Xihluke's condition meant the operation was time sensitive. "A ventricular septal defect, or VSD, refers to a large hole in the wall between the two lower chambers of the heart. Unfortunately, as the child grows, this type of heart defect can damage the arteries of the lungs, so it needs to be fixed as quickly as possible," Dr Schürmann says.

Netcare's corporate social investment (CSI) arm, the Netcare Foundation, immediately pledged support for the procedure. "The Netcare Foundation has a long association with the Maboneng Foundation, which coordinates the specialised resources needed for the life-changing, lifesaving procedures for children with heart defects, like Xihluke," says Mande Toubkin, Netcare's general manager of emergency, trauma, transplant and CSI.

In August 2025, cardiothoracic surgeons Dr Lehlohonolo Dongo and

Dr Martin Myburgh of the Maboneng Heart and Lung Institute, paediatric cardiologist Dr Kenny Govendrageloo and anaesthetist Dr Stephanie Fischer gave their time and expertise to perform the intricate heart operation for 10-month-old Xihluke at Netcare Sunninghill Hospital.

"We were relieved that Xihluke was having the operation, but at the same time, we were worried because it is such a big procedure and she was so small. But our prayers were answered because Xihluke responded quickly to the operation, and she recovered easily," Oddette says.

Just three days after her procedure, Xihluke was well enough to go home with her parents. "She started growing quickly, and her weight is much better. She loves to eat pumpkin, and she enjoys maize meal porridge with peanut butter and a bit of sugar."

Xihluke's father expressed the family's gratitude for the efforts to assist their daughter. "We thank God for the kindness and skill of the medical teams both at Steve Biko Academic Hospital and Netcare Sunninghill Hospital. We thank the doctors and nurses, and the Netcare and Maboneng Foundations, for giving our daughter this second chance at a full, healthy life," Dzunisani says.

Toubkin commended the medical teamwork and collaboration between private and public healthcare to ensure Xihluke's future. "Working together through initiatives such as this, healthcare interventions can reach more children and change their lives. We encourage other organisations looking to make a difference to consider the lasting impact that health-focused initiatives can have – not just on individuals, but on entire communities," she concludes.

For more information about the Maboneng Foundation, visit <http://www.mabonengfoundation.co.za/>.

Driving customer satisfaction

# BIDVEST MCCARTHY WOODMEAD

**S**trategically situated in Waterfall City at the corner of Waterval Crescent and Woodmead Drive in Woodmead Retail Park, Bidvest McCarthy Woodmead boasts one of the most commercially valuable locations in Gauteng. For 17 years, this dealership has leveraged its position in one of Johannesburg's busiest retail and commercial centres.

This central, highly visible spot allows them to effectively serve a diverse clientele: from professionals in the surrounding corporate hubs and logistics companies requiring fleet solutions, to families moving into the expanding residential developments across Waterfall City. The easy accessibility ensures that sales, maintenance, and aftersales support are always convenient for you and your business, ensuring minimal downtime for your commercial vehicles.

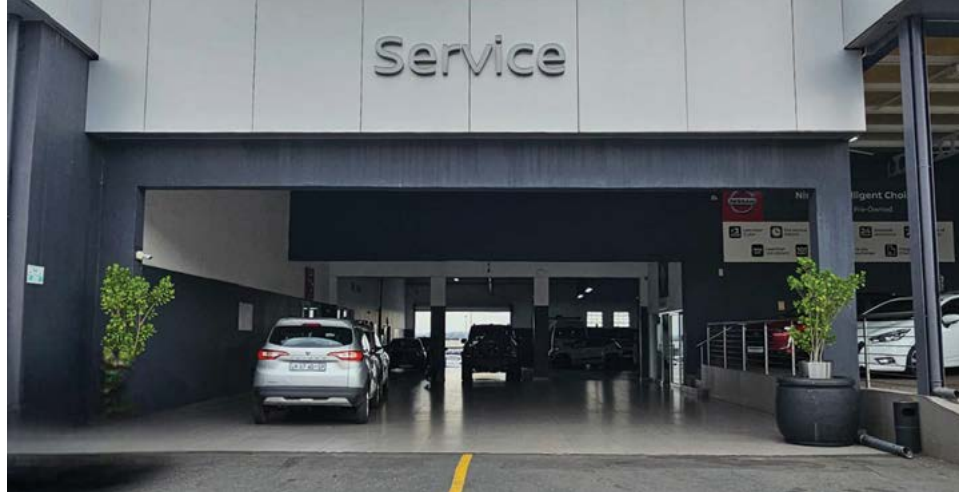
## Multi-brand dealership

Bidvest McCarthy Woodmead operates as a premier multi-brand dealership, providing comprehensive mobility solutions that cater to various business and personal needs:

- **New vehicle sales:** They offer the latest models from Nissan (including the reliable Magnite and powerful Navara), Renault (with the compact Kiger and flexible Triber), and the adventure-ready Jetour SUVs (T1 & T2).
- **Quality pre-owned:** A carefully curated selection of quality pre-owned vehicles across all brands.
- **Expert aftersales:** Genuine service and maintenance, using OEM-approved parts, for Nissan, Renault, and Jetour, ensuring quick and efficient turnaround times.
- **Corporate and fleet solutions:** Tailored solutions designed specifically for business and fleet clients, supported by the national infrastructure of Bidvest Automotive.



Service



- **Financial services:** Seamless finance and insurance assistance through trusted partners.

### Experience built on trust

The team's commitment to customer care is the cornerstone of its operation. When you engage with Bidvest McCarthy Woodmead, you can expect a professional, stress-free experience from start to long-term ownership.

### The showroom and service promise

The showroom features a modern, open-plan design filled with natural light, creating a welcoming and relaxed environment perfect for exploring the premium vehicle displays. The dedicated sales and aftersales teams ensure transparent communication and personalised support.

### The Bidvest backing

As part of the Bidvest Automotive group, they offer stability, strong ethical standards, and operational excellence. This backing ensures competitive pricing due to group buying power, reliable parts supply, and a commitment to long-term credibility that customers demand.

They cater to every client – from first-time buyers seeking affordability to fleet managers needing dependable commercial partners – delivering a seamless, premium value proposition rooted in quality, convenience, and expert support.

### Stay updated

You can keep up to date on all the latest Bidvest McCarthy Woodmead news, upcoming launches and special offers via their official social media channels, e-newsletters, WhatsApp communication line or by visiting the dealership and speaking directly to a sales representative.

### Find them

Cnr Waterval Crescent and Woodmead Drive, Woodmead Retail Park, Waterfall City  
011 517 3600



# NOT JUST A PRETTY SPACE

## Intentional Design for elevated living in 2026



**A**t Lynne Blumberg Interior Design we don't like to just follow trends, we outlast them. Interior Design is no longer just about the way a place looks, but how it lives. The 2026 home is all about intention, emotional grounding, and personal expression. From the way we work to how we rest; design responds to the collective desire for comfort, individuality and longevity. These are the shifts that are defining this year's design ideology. 2026 Interior Design is less about a roaring scream, and more about an indulgent whisper.

### Warm minimalism takes centre stage

Minimalism hasn't disappeared; it has simply softened. 2026 sees stark white interiors warmed up with layered textures, and lived-in finishes. Think creamy neutrals, clay tones, muted olives, and sand-inspired hues. Spaces feel calm but not cold, refined but deeply human. This approach allows

homes to feel curated without being clinical, perfect for those clients who crave elegance without sacrificing warmth.

### Personality driven interiors

Cookie-cutter interiors are officially out. Clients are looking for homes that reflect them. There is a definite rise in bespoke furniture, custom joinery and collected furniture pieces that tell a story. Vintage and antique finds are positioned comfortably next to more contemporary furniture as homes begin to feel more thoughtfully curated as opposed to surgically designed overnight. In 2026, beautiful designs are no longer about following every trend, but about adopting the ones that most align with your lifestyle.

### Multifunctional spaces designed beautifully

With hybrid living becoming more prevalent, our homes are working overtime. Home offices are blending seamlessly into living areas, dining

rooms are doubling as creative studios, and guest bedrooms offer flexible functionality. The focus is shifting to adaptable furniture that moves and flows with our lives without compromising on aesthetics. Intelligent layout, clever storage ideas, and moveable pieces are all forming part of the bigger picture that is our home. Functionality and beauty are no longer exclusive but rather work symbiotically to create interiors that live with us.

### Sustainability is here to stay

Sustainable Design has evolved beyond buzzword status, and in 2026 is an industry standard. At Lynne Blumberg Interior Design, we are prioritising quality over quantity, opting for durable materials and ethically sourced furniture, accompanied by a timeless design that does not need updating in the next five years. Natural materials like stone, solid wood, and linen continue to permeate, creating grounding spaces and reducing environmental impacts.

### A return to sensory design

2026 sees interiors becoming more immersive and tactile. Textured wall coverings, layered lighting, curved shapes, and soft acoustics all contribute to spaces that feel good to be in. Interior Design is engaging spaces, creating homes that welcome you back after a long day. Your home should feel calming and restorative, a gentle embrace after the hustle and bustle of the outside world.

At its core, 2026 has started itself off as a year for intentional design, calming interiors and decisive ideals. We cannot wait!

[www.lynnablumberg.co.za](http://www.lynnablumberg.co.za)



LYNNEBLUMBERG  
INTERIORDESIGN





# DRIVEN TO EVOLVE

To think that Changan is “just another” Chinese entrant into the local South African automotive landscape, could not be further from the truth. Changan has arrived in South Africa with the quiet confidence of a brand that has already been real-world tested and proven on a massive global scale. This is a manufacturer with serious staying power and enviable momentum.

In December 2025, Changan marked a significant milestone with the production of its 30 millionth vehicle, underscoring the depth of its engineering track record and the sheer breadth of its international ownership base.

But Changan’s story in South Africa isn’t only about global numbers, it’s about genuine local intent. The brand’s promise is simple and sharply relevant: to bring the cars of tomorrow to all South Africans today – delivering on value, safety, and next-level technology without pushing innovation into an unattainable territory. Changan leans into the reality of a market where buyers want their vehicles to make sense for real life, while still expecting modern connectivity, intelligent features, and smart safety as standard.

A practical foundation backs Changan’s promise to South Africa because an incredible drive means nothing without support, after the sale.

Changan’s local plan is built around a growing national dealer network, each fully equipped for sales, service, support, and parts supply.

Then there’s Changan Journey, the brand’s after-sales promise designed to make ownership feel less like a leap of faith and more like a guided, considered experience. It integrates customer-focused support, extensive vehicle warranties, service plans, and 24-hour roadside assistance, turning peace of mind into a guaranteed, non-negotiable benefit from day one.

To reinforce parts availability and reduce downtime, Changan has also established a major parts warehouse in Kempton Park, Johannesburg, built for fast national distribution.

But it’s the vehicle range where the brand’s capability really comes to life. Changan’s South African line-up is intentionally broad, covering models that offer everyday accessibility, family SUV flexibility, and exciting electric progress. Changan has launched the Hunter Diesel range, the Hunter

REEV (the world’s first range-extender electric bakkie), and the show-stopping all-electric Deepal S07.

Changan’s philosophy for South Africa is “Driven to Evolve.” It’s a promise that connects its heritage to its future, now localised and tailor-made for all South Africans. It speaks to a brand that refuses to stand still, constantly refining how vehicles are designed, built, and experienced. From intelligent safety systems and next-generation connectivity to electrified and range-extended cars, Changan’s evolution is deliberate and human-centred. The focus is not innovation for its own sake, but progress that improves everyday driving, adds real value, and keeps pace with how people live and move today.

For South Africans, Driven to Evolve also signals a long-term commitment: an investment in local infrastructure, after-sales support, and the vehicles of tomorrow that are genuinely accessible and attainable for everyone today.

[www.changanmotors.co.za](http://www.changanmotors.co.za)



SINCE 1862



SINCE 1862

SPACE FOR LIFE'S BIGGEST ADVENTURES

# CS75 PRO



For those who never stand still and demand a spacious SUV built for life at full pace. Meet the powerful and intelligent CHANGAN CS75 Pro.

Available with both 5- and 7-seats.

FROM  
**R5 651 pm**

Explore More &  
Book Your Test  
Drive Today.



#### DISCLAIMER

Features and specifications & claimed figures are subject to change & are market dependant on grade & equipment. Please consult your local changan dealership for more information. 10% deposit, 40% balloon, 10,68% interest rate over 72 months.

**DRIVEN TO EVOLVE**

[changanmotors.co.za](http://changanmotors.co.za)



AMERICAN INTERNATIONAL  
SCHOOL OF JOHANNESBURG

*Strong*  
**START!**  
*Bright*  
**FUTURE.**

STARTING AT 3 YEARS OLD (000)

**EXCEPTIONAL**  
**INTERNATIONAL EDUCATION**

**DISCOVER HOW A STRONG START LEADS TO A BRIGHT FUTURE!**



Campuses in Pretoria & Johannesburg

Pre-K (000) - Grade 12

## **INSPIRING GLOBAL THINKERS**

- International Baccalaureate Primary Years Programme (PYP) Candidate School
- International Baccalaureate Diploma Programme (IBDP) for 33 Years
- French and Spanish are offered at every grade level

## **SMALL CLASSES. BIG IMPACT.**

Personalised learning that nurtures individual strengths, confidence, and growth

## **INCLUSIVE EDUCATION**

- Embracing neurodiversity through individualised learning pathways
- Multiple learning pathways offered

## **LUXURY BOARDING EXPERIENCE**

A world-class boarding programme that supports independence, well-being, and academic focus for students in Grades 8-12

## **ACCESS TO GLOBAL UNIVERSITIES**

99% of AISJ graduates pursue higher education at global universities across the US, Canada, UK, Europe, Asia, Africa, Australia, and beyond.



[admissions@aisj-jhb.com](mailto:admissions@aisj-jhb.com)



# TRANSFORM YOUR SPACE

Wolkberg merges local craftsmanship with sustainable material innovation



As we step into 2026, Wolkberg proudly marks 11 years in the industrial design and manufacturing industry – a milestone shaped by experimentation, craftsmanship, and an unwavering commitment to material innovation. Over the past decade, we have mastered the art of bending and folding Limesite™, transforming a raw, tactile medium into sculptural surfaces that redefine how spaces are experienced. Through this process, Limesite™ has become more than a material; it is a design language – one that allows us to shape interiors and architectural environments across the globe. With this remarkable material, we create a diverse range of products, including bespoke kitchen and bar surfaces, architectural cladding, furniture, and our highly sought-after collection of handmade tiles.

Our journey has always been rooted in pushing boundaries. By shaping and handcrafting Limesite™ into richly textured, expressive forms, we have been able to influence the design of contemporary spaces while remaining deeply connected to our origins. As a proudly South African studio, our

heritage continues to inform our work – seen in our appreciation for natural textures, bold surfaces and an honest relationship with materiality. This balance between innovation and tradition remains central to who we are and where we are headed.

In 2026, we intend to push our limits even further. As modern-day architecture evolves, so too does our approach to design and production. We continue to explore new techniques, finishes and forms, ensuring that our products not only respond to global design conversations but actively shape them. Our wide-ranging collection offers something for every designer and homeowner, from statement surfaces that anchor a space to refined textures that quietly elevate an interior.

Collaboration has always been at the heart of Wolkberg. This year, we look forward to working closely with architects, designers and creatives who share our passion for expressive design. We are equally excited to engage with audiences who have a distinct and discerning taste – those who seek materials with character, depth and authenticity. We encourage them to visit our website and Instagram page to gain a deeper understanding of what we create and what we stand for.

As we begin this new chapter, the Wolkberg team wishes everyone a successful year filled with growth and opportunity. We look forward to shaping spaces, building relationships and continuing our journey of influencing design – one handcrafted surface at a time.





CASTING STUDIO



183B Abraham Van Wyk  
Ruimsig  
Johannesburg  
South Africa



+27 65 986 8560



ramielle@wolkbergcs.com



Shop 9  
17 4<sup>th</sup> Avenue  
Parkhurst Wolkberg Showroom



WWW.WOLKBERGCS.COM



# ST PETER'S COLLEGE

Where care meets excellence and potential becomes achievement

**S**t Peter's College, a private Anglican co-educational high school nestled in the heart of Sunninghill, has once again affirmed its standing as a school of substance, character and academic excellence. The school proudly celebrates the outstanding achievements of its Class of 2025, which attained a 100% matric pass rate, a milestone that reflects both individual commitment and a deeply rooted culture of care and excellence.

Of the 161 matriculants, an impressive 93.2% achieved Bachelor's Degree passes, with the class collectively earning 328 subject distinctions, averaging more than two distinctions per learner. In addition, the cohort secured 370 B symbols, further underscoring the strength and consistency of academic performance. These results continue an upward trend and firmly reinforce the College's motto: *In Futurum Fortiter – Bravely Into The Future.*

What makes this achievement particularly noteworthy is St Peter's

College's non-selective admissions policy. There are no entrance assessments and no filtering based on prior academic performance. Instead, the College welcomes all learners, placing faith in the potential of each individual child. The Class of 2025's exceptional results stand as powerful evidence that when learners are supported holistically, excellence follows naturally.

At St Peter's College, education extends far beyond examination results. The College is committed to nurturing the overall well-being of every learner, recognising that confident, grounded young adults are best prepared for the challenges and opportunities of the future. Academic rigour is carefully balanced with sport, music, cultural pursuits and religious practice, all underpinned by a clearly defined Anglican value system that shapes character, compassion and integrity.

No child is left behind. A dedicated team of staff provides academic, emotional and spiritual support



throughout each learner's journey. This comprehensive approach ensures that every student is known, supported and encouraged to achieve their personal best.

The Class of 2025 boasts a remarkable spread of high achievers. Three learners achieved eight distinctions, four achieved seven distinctions, four achieved six distinctions, while many others earned five or more distinctions. Leading the cohort were Georgia Comodikes, Sravya Ghantasala and Savarya Govender, each attaining eight distinctions with exceptional average marks.



**ST PETER'S  
COLLEGE**

Georgia Comodikes, the top achiever of the year, distinguished herself not only academically but also through her exceptional talent in public speaking. She matriculated with a Bachelor's Degree pass, eight distinctions and two IEB Top 1% achievements. Reflecting on her journey, she said, "I'm super thrilled to be starting actuarial science at Stellenbosch University next year and have St Peter's College to thank for setting that up for me."

Sravya Ghantasala combined academic excellence with leadership, serving as photography club captain while achieving an outstanding average. Savarya Govender was recognised for her consistent diligence and strong academic record, having received academic awards throughout her schooling.

Deputy Head: Academics, Ryan Hammond, praised the entire cohort, saying: "We are extremely proud of every single student of the Class of 2025 – from those who earned multiple distinctions to those who improved and achieved

their best results ever. Your hard work, resilience and commitment have paid off. Well done and go bravely into the future."

True to its holistic ethos, St Peter's College celebrates not only academic success, but also the achievements of learners who have excelled in leadership, culture, sport and service. These young adults now step into the world equipped to reach their full potential in whatever path they choose.

Families wishing to experience the spirit and values of St Peter's College are warmly invited to attend the Open Day on Wednesday, 18 February 2026 at 15:00, an opportunity to discover a school where excellence is nurtured, potential is unlocked and every child truly matters.

For enquiries, contact the Admissions Department at [admissions@stpeterscollege.co.za](mailto:admissions@stpeterscollege.co.za) / 011 807 5315





ST PETER'S  
COLLEGE

*Bravely into the future...*

# OPEN DAY

Wednesday,  
**18 February 2026**  
at 15:00

For more information, email:  
[admissions@stpeterscollege.co.za](mailto:admissions@stpeterscollege.co.za) or call **011 807 5315**



Stpeterscoll



@stpeters\_college



StPetersCollege

# NAMIBIA, WHERE TIME HOLDS ITS BREATH

By Nicola Killops



**T**here are few places left in the world where silence feels sacred. Namibia is one of them. It begins with the light, its honeyed glow turning rock into gold and shadow into story. Out there, distances deceive you. Dunes appear close enough to touch, then shift with every breath of wind. The horizon moves, the earth breathes, and for a while you forget you're standing on the same planet that plays host to rush hour.

## The desert that dreams

The Namib desert is often mistaken for the Sahara in photographs. It's a confusion that flatters both. The Namib is older, perhaps the oldest desert on earth, its rust-coloured dunes shaped by wind and time into something almost sculptural. The locals call it "the vast place", and it is. But vast doesn't mean empty. If you stand quietly, you'll

hear the sand move – it emits a low, humming sigh as the wind reshapes the landscape grain by grain.

At dawn, the light catches the dunes like molten copper; at dusk, the dunes cool into a velvet shadow. I stood once at the edge of Sossusvlei as the sun dipped below the horizon and the silence pressed in – a deep and physical silence, the kind that fills you rather than frightens you.

Drive through Namib-Naukluft National Park and you begin to understand why this country's citizens can't be rushed. The road stretches forward like a suggestion, bordered by nothing and everything – thornbush, salt pans, mirages. The air smells of dust and distance. Ostriches cross as if late for something, springboks appear and vanish... the whole landscape feels half-dreamed, half-remembered.

## Where water cuts through stone

Far south, the Fish River Canyon opens suddenly, a quiet thunder in the land. It's one of the largest canyons in the world, but there's nothing grandiose about it. The silence is steady, the scale not flashy. Standing on the rim, you sense how ancient this earth is and how little it asks of you beyond respect.

The air is dry enough to taste. The wind has its own rhythm. Somewhere below, a single river thread twists between shadows. Photographs don't capture it; they only flatten what is, in truth, a living thing.

## Land of tribes and memory

Head north, and Namibia changes tone. The ochre plains give way to scrub and smoke, and the light sharpens again. This is Kaokoland, home to the proud Himba people,

## Waterfall City **Travel**

who still live much as their ancestors did – herding cattle, tending fires and covering their skin with a deep red mixture of ochre and butter fat.

Visiting a Himba village feels less like looking back in time and more like standing still in it. There's rhythm in their way of life, a kind of quiet choreography: women grinding ochre, children laughing somewhere unseen, the faint smell of woodsmoke and wild herbs curling through the air.

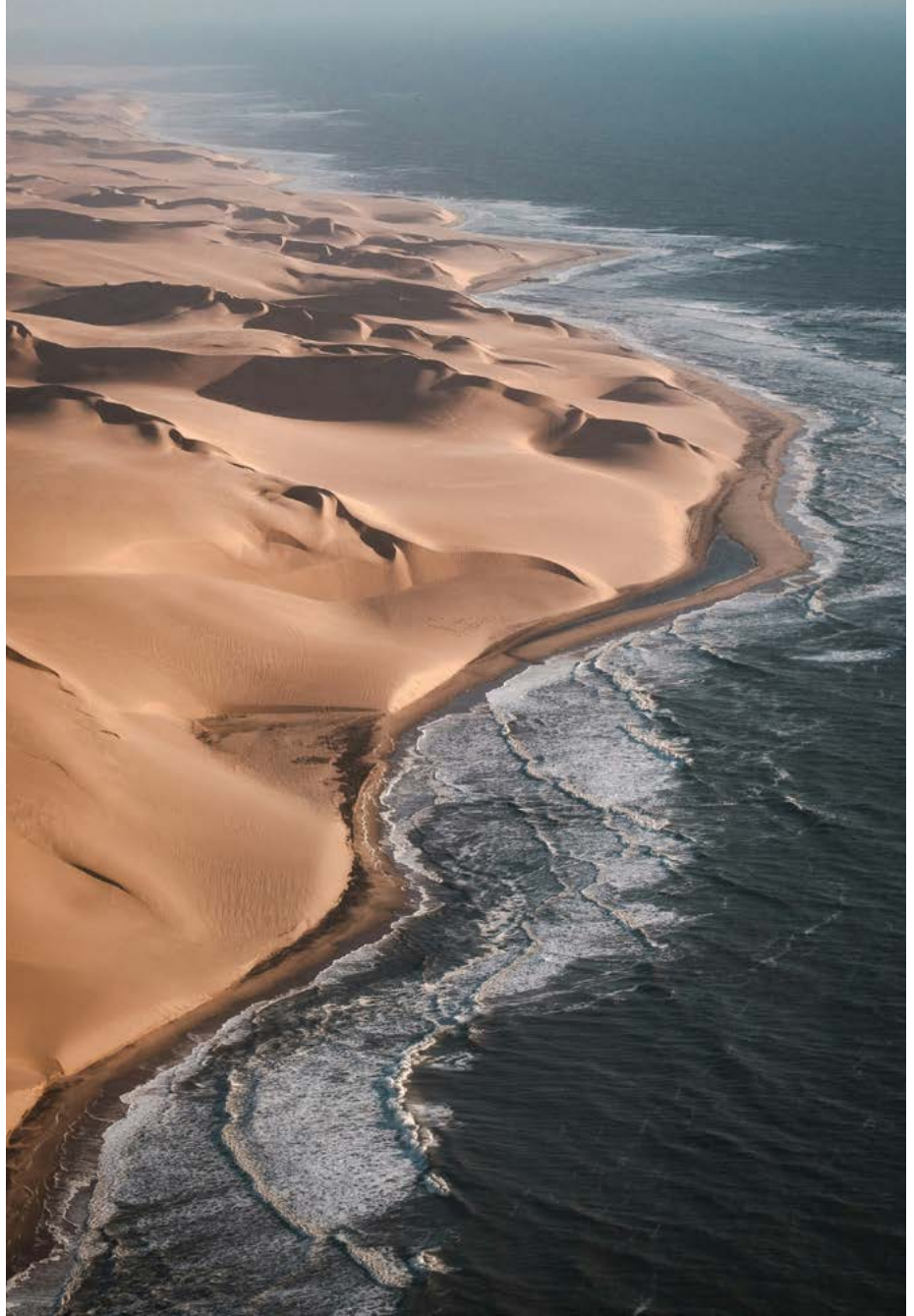
Further east, in Damaraland, the ground itself tells stories. The rock engravings at Twyfelfontein – of giraffes, hunters and spirals – have watched over this valley for thousands of years. They speak of survival, celebration and faith carved into stone by the San long before the idea of Namibia existed.

Nearby, at the Damara Living Museum, that heritage is actively practised as women describe the bush plants from which food, medicine and perfume are derived. Men demonstrate fire-lighting, carving and the art of patient creation. It isn't performance, it's preservation; a small yet steady act of keeping identity alive.

### **Rivers, waterfalls and hidden villages**

Follow the sound of water and you'll find Epupa Falls, where the Kunene River tumbles over a series of rocky ledges near the Angolan border. "Epupa" means foam, and it's apt – the spray rises like breath against the sky. Children play along the banks, the Himba women weave beads in the shade, and the whole place hums with a kind of gentle continuity.

Further east, the Mbunza Living Museum near Rundu sits beside a quiet lake. Here, the Kavango people share their traditional crafts and stories. There's laughter, leather and the smell of Mangetti nut oil on the breeze. It's a small place, but deeply moving – proof that culture, like the river itself, keeps finding a way to flow.



### **The kingdom of dust and light**

We reach vast, white and shimmering Etosha. The great pan stretches endlessly, alive with mirages and movement. When rain comes, it becomes a mirror. Elephants move like slow grey tides, zebras stripe the horizon and flamingos rise in pale clouds.

There's something transcendent about watching wildlife in such a stark place; it's as if the animals themselves have learned to become part of the light. You realise, after a while, that Namibia's beauty isn't only visual, it's structural. It sits in the bones of the land, and if you're still and quiet enough, you can feel it hum beneath your feet.

### **A journey measured in stillness**

Namibia isn't a country you visit; it's a country you listen to.

It teaches patience as you wait for colour to shift, for the wind to change, for silence to speak. You arrive thinking you're chasing beauty, but you leave knowing you've been taught reverence.

As my plane lifted off from Windhoek, the landscape unrolled below me – red dunes, pale salt, green veins of river – and I realised I wasn't leaving anything behind. I was simply taking a quieter version of myself home.



**100%**  
IEB PASS RATE

**+15%**  
ACADEMIC IMPROVEMENT

# CONGRATULATIONS *to our very first* MATRIC CLASS

The Bridge School graduates enjoy preferential access to ADvTECH tertiary insitutions across the country. \*  
\*Ts&Cs Apply



LONEHILL & MORNINGSIDE

**OPEN DAY**  
SATURDAY, 28 FEB  
09H00 - 11H00

**OPEN EVENING**  
THURSDAY, 12 MARCH  
18H00 - 19H30

# A SELECTION OF TOP SCHOOLS IN YOUR AREA

*Preparing your children  
for the future*

# EDUCATION

FEBRUARY 2026



AMERICAN INTERNATIONAL  
SCHOOL OF JOHANNESBURG

Learning isn't a straight line - it's a journey of discovery and growth.

## LEARNING ISN'T LINEAR

OUTREACH & SOCIAL RESPONSIBILITY  
ACADEMIC EXCELLENCE  
CULTURAL DIVERSITY

AN EIA SUPPLEMENT FEATURING A SELECTION OF TOP SCHOOLS  
IN JOHANNESBURG AND PRETORIA

**CLICK  
HERE TO  
VIEW**

# FREE

## BRANDED PRESCRIPTION sunglasses

up to **R3300**



Buy 1

Get 1



MALL OF AFRICA 010 612 6440 | Shop 1117

Terms and conditions apply. Get FREE single vision prescription sunglasses up to R3300, when you purchase a comprehensive eye examination, prescription frame and lenses.



Elevate your escape  
**BOOK NOW**



CURATED EXPERIENCES, REFINED DINING,  
AND BREATHTAKING SAFARIS IN THE HEART OF THE WATERBERG.  
**DESIGNED FOR EFFORTLESS LUXURY**



## PAINT FRIENDLY cc

for all your

### DAMP-PROOFING WATERPROOFING

**Chris - 082 332 9225**

Owner Supervision  
Guarantees  
References available

## COLCACCHIO WATERFALL

3 FOR 2

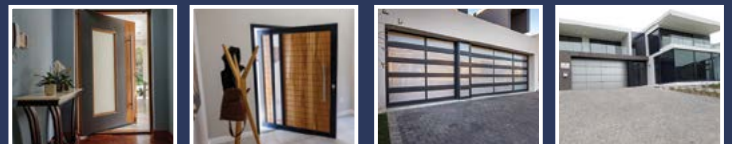
### TASTY TUESDAY TRIO

INDULGE IN ANY 3 PIZZAS, PASTAS  
AND/OR SALADS & GET THE  
CHEAPEST ITEM FOR FREE.

COLCACCHIO WATERFALL | 010 205 9004  
OFFER AVAILABLE FOR COLLECTION ON  
TUESDAYS ONLY, UNTIL 1 JUNE 2026.  
T&CS APPLY.



Since 1986 - Companies come and go, we are here to stay !



Aluminium - Supply & Installation  
Doors, Windows & Contemporary Garage Doors

Showroom  
148 Industrial Rd, Kya Sands

Phone: 011 708 2488 or 010 593 7997

[www.vanacht.co.za](http://www.vanacht.co.za) ■ [sales@vanacht.co.za](mailto:sales@vanacht.co.za)

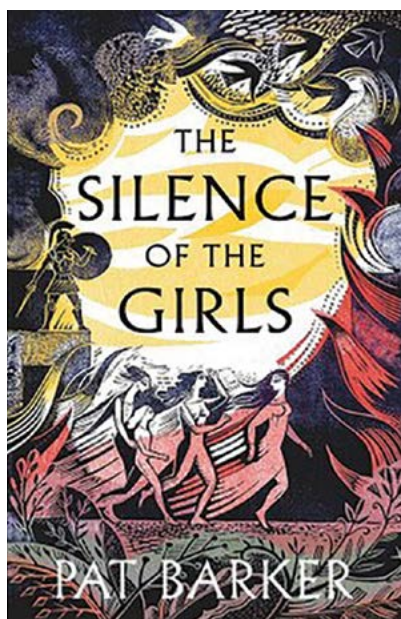
# READING GUIDE

Books worth sinking into this summer – for adults, teens and tweens

**T**he holiday season is over, January is a blur, and we ease into the new year still hoping to carve out some time to read. The rush lingers, but the days begin to stretch, afternoons

slow, and books – real books – start calling again. Whether you're reading on a lounge, between braais, or stealing an hour of quiet from a busy household, here are nine excellent picks for the season.

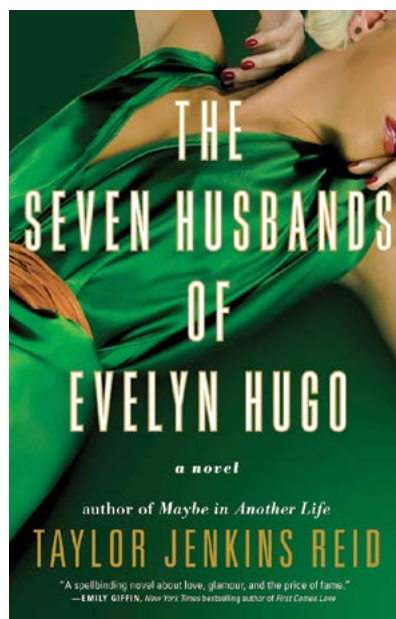
## FOR ADULTS



### The Silence of the Girls

By Pat Barker

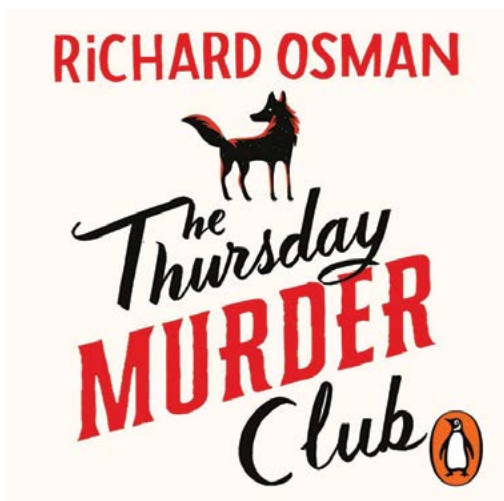
A beautifully written retelling of the Trojan War through the eyes of the women caught in it. Emotionally layered without being heavy, and powerful without losing its humanity. Perfect for readers who want something intelligent and absorbing – the kind of novel you carry with you long after you finish it.



### The Seven Husbands of Evelyn Hugo

By Taylor Jenkins Reid

Old Hollywood glamour, secrets, ambition, heartbreak – and a perfectly structured story that pulls you in from page one. It's fast, addictive and emotional in all the right ways. Ideal for readers who want a book with substance that still goes down easily.

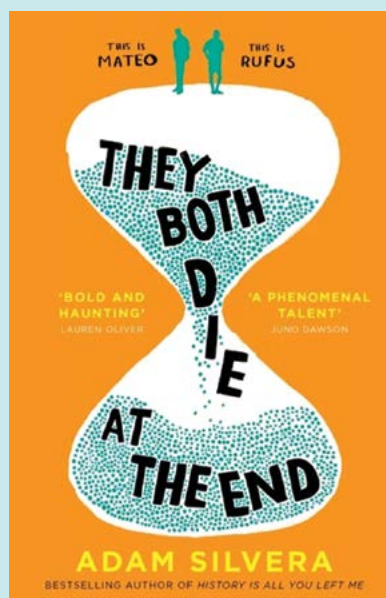


### The Thursday Murder Club

By Richard Osman

Four retirement-village residents solving crimes between tea breaks and gossip. Sharp, warm, funny and cleverly plotted. This is the book you give to anyone who wants joy, intelligence and a little mystery – without the darkness that usually comes with crime fiction.

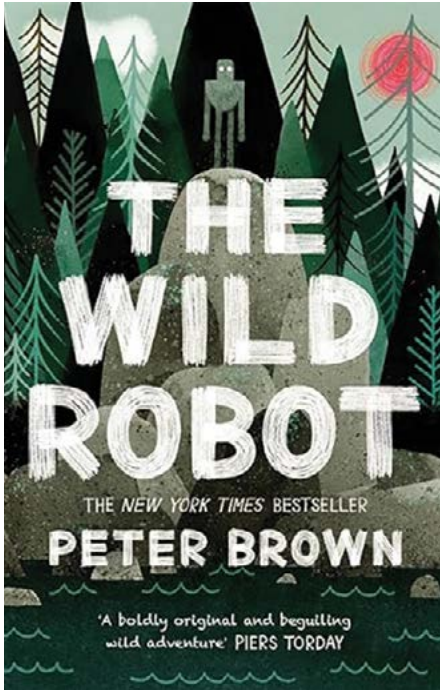
## FOR TEENS AND YOUNG ADULTS



### They Both Die at the End

By Adam Silvera

A modern YA classic. Two boys meet on the day they're told will be their last – and decide to live fully for just one more day. Heart-squeezing, beautifully written, and oddly uplifting. Teenagers devour this and immediately hand it to a friend.

**FOR TWEENS (ages ± 9-12)**

**The Wild Robot**

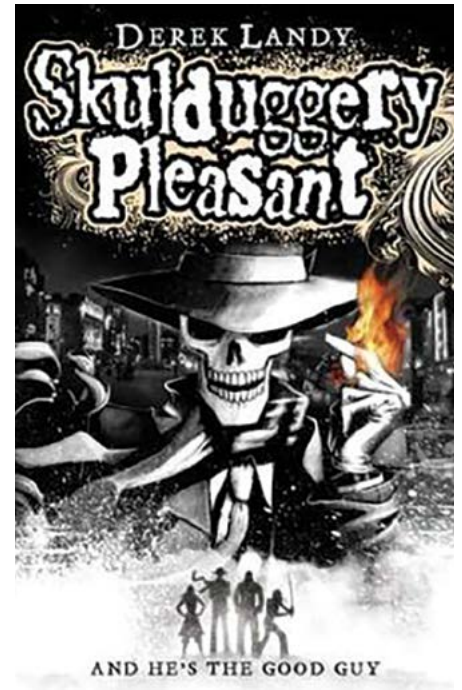
By Peter Brown

A gentle, imaginative story about a robot who washes up on a remote island and learns to survive by befriending the animals. Warm, thoughtful and utterly charming – brilliant for children who love adventure with heart.


**A Kind of Spark**

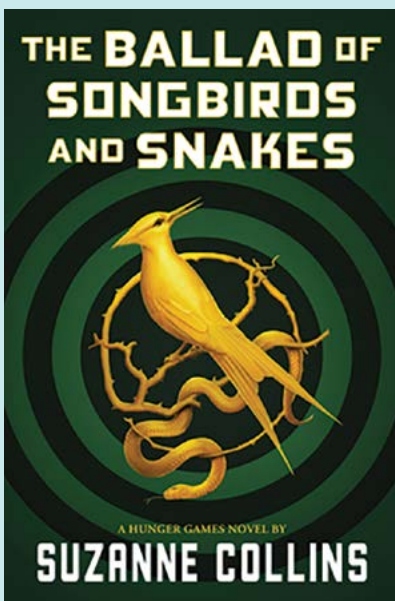
By Elle McNicoll

Written by a neurodivergent author and loved by neurodivergent kids. It's honest, brave and beautifully told – a story about finding courage, speaking up, and feeling different in a world that doesn't always understand. A meaningful, confidence-building read.


**Skulduggery Pleasant**

By Derek Landy

A talking skeleton detective, a brave girl sidekick, magic, danger and sharp humour – tweens adore this series. Smart, funny, and just spooky enough to be exciting without keeping anyone up at night.


**The Ballad of Songbirds & Snakes**

By Suzanne Collins

A return to the world of *The Hunger Games*, but deeper, more political, and surprisingly subtle. It follows the early life of President Snow – long before he becomes the villain we know. Ideal for teens who enjoy dystopian worlds and want something immersive for long summer afternoons.


**One of Us Is Lying**

By Karen M. McManus

A clever, compulsively readable school-set mystery with secrets, twists and plenty of tension. Great for reluctant readers because the pace is fast, the chapters short, and the drama constant. Perfect reading for teens.

# Waterfall City Classifieds

## MEDICAL SERVICES

### AUDIOLOGY/HEARING

**Hearcare Waterfall Hearing and Balance Clinic** 011 304 7920  
Free hearing screenings. Home visits in Waterfall City estates. Rooms: Waterfall City Netcare Hospital. [www.hearcare.co.za](http://www.hearcare.co.za)

### HYPNOSIS

**Certified Hypnotherapist Lee-Anne** 081 282 0461  
Make positive changes. Gain control of your life. I can help with anxiety and stress, exam stress, fears, weight loss, stop smoking, addictions, grief, relationships and self-confidence. In-person and online sessions available. [www.leadchange.com](http://www.leadchange.com)

### MEDICAL GENERAL

**Kyalami Health** 010 335 0625  
General practitioners/travel/aesthetics/immunisation/drip clinic pathology/mum and baby clinic/minor surgical procedures. Kyalami Downs Shopping Centre. Email: [info@kyalamihealth.co.za](mailto:info@kyalamihealth.co.za)

### MENTAL HEALTH

**J.A Therapy** 079 520 0982  
J.A Therapy provides personalised remedial therapy, tutoring, and clinical psychology services, focusing on enhancing learning and mental well-being. Visit [www.jatherapy.co.za](http://www.jatherapy.co.za) or email [info@jatherapy.co.za](mailto:info@jatherapy.co.za)

### OCCUPATIONAL HEALTH PRACTITIONER

**Occupational Health Medical** 082 862 7892  
Screening (Red tickets) and Travel Clinic  
Address: 181 Bekker Road, Vorna Valley, Midrand. Booking is essential: [midrandkohc@krielhealthcentre.co.za](mailto:midrandkohc@krielhealthcentre.co.za)

### OPTOMETRIST

**Specsavers for affordable eye care, contact our experienced team.**  
**Mall of Africa** 010 612 6440  
Optometrists Marlice Joubert and Monica Naicker  
Book online: [www.Specsavers.co.za](http://www.Specsavers.co.za)

## GENERAL SERVICES

### BABY AND CHILD CARE

**Call Sarah Austin** 071 135 9996  
Available in the Waterfall City area. Sarah has 15 years' experience in baby and child care and she has recently moved to Waterfall City. She is available on a full-time/part-time/ad hoc basis. References/CV available.

### CATERING

**Chef Neo**  
A bespoke catering and private chef service. Dinner parties, high teas and delectable buffets in the comfort of your own home. Visit [www.platedbychefneo.com](http://www.platedbychefneo.com) to book.

### CLEANERS

**Crisp and Clean** 083 378 3331  
Door-to-door, taking the hassle out of cleaning laundry, dry cleaning, upholstery and carpet cleaning.

### COMPUTERS

**Matrix Warehouse** 011 466 0434  
We offer a wide variety of products and services including new PCs, notebooks, tablets, printers, networking products, all PC/NB related cables and accessories. We also offer repairs on all PCs and NBs, both software and hardware problems. [kyalami@matrixwarehouse.co.za](mailto:kyalami@matrixwarehouse.co.za)

### DELIVERY SERVICE

**Mr Delivery Midrand** 011 315 2926

## HOME CLEANING SERVICE

**Clean My Bed**  
**Jonathan Akal** 069 797 6370  
Clean My Bed is a medical grade, deep clean sanitising service that removes dust mites and pet dander to help with allergies. Email: [jonathana@cleanmybed.com](mailto:jonathana@cleanmybed.com) or visit: [www.cleanmybed.com](http://www.cleanmybed.com)

**Clean My Space ZA** 076 251 2263  
We are a Domestic Cleaning Service offering peace of mind to homeowners. We exist to ensure that household chores do not interrupt your already busy calendar. Book us daily, weekly or monthly on our website: [www.cleanmyspaceza.co.za](http://www.cleanmyspaceza.co.za), or WhatsApp 076 251 2263. If you prefer to speak to a human, call us on 076 251 2263. Clean My Space ZA is based in Kyalami and services the Waterfall City and Kyalami areas.

## PET GROOMING

**Soapy Smooches Mobile Pet Groomers** 061 087 8247  
We come to you! Pamper your pets at home in our fully-equipped pet parlour on wheels. BOOK NOW - [info@soapysmooches.co.za](mailto:info@soapysmooches.co.za)

## PET & HOME SITTERS

**Pet/Home Sitter** 076 035 6908  
Why leave your pets alone and away from home. Leave them in their own loving home. Mature Lady fills the gap. Contact Dee-Jean at [djb160453@yahoo.com](mailto:djb160453@yahoo.com)

## RESTAURANTS

**Col'Cacchio Waterfall** 010 596 8941  
[waterfall@colcacchio.co.za](mailto:waterfall@colcacchio.co.za)

## SPEECH & LANGUAGE THERAPIST

**Lara Ramos** 082 480 6716  
Specialising in both child and adult disorders. Email: [l.d.ramos@hotmail.com](mailto:l.d.ramos@hotmail.com)

## TUTORING

**Maxi Brain Tertiary & Secondary Tutor** 079 693 7190  
Economics & management sciences subjects, bridging classes, private & groups.

## TYRES

**Supa Quick** 011 466 6076  
Kyalami Boulevard

## HOME SERVICES, BUILDING & MAINTENANCE, APPLIANCE REPAIRS

### APPLIANCE REPAIRS

**AC Appliance Repairs Pty Ltd** 083 949 6555  
We are authorised SMEG agents, specialising in the repair and servicing of all makes and models of domestic appliances. Our website offers a convenient way to order genuine SMEG spare parts and book your service calls online. With over 25 years of experience in the repair industry, we proudly service all major leading brands. Email: [clint@acappliances.co.za](mailto:clint@acappliances.co.za) [www.acappliances.co.za](http://www.acappliances.co.za)

### ARCHITECT

**Drawbox Design Studio** 082 339 5834  
The Leader in providing sustainable building solutions. Contact Carlu Swart.

### BUILDING

**Care Construction and Paving** 011 469 4300  
**Ian** 083 250 3736  
We specialise in new houses, additions and alterations, paving, painting and all your building requirements, no matter how big or small. Over 30 years' experience. [www.careconstruction.co.za](http://www.careconstruction.co.za) Email: [ian@careconstruction.co.za](mailto:ian@careconstruction.co.za)

### DRAIN MAINTENANCE

**SirDrain** 011 454 3534 / 083 231 5809  
Call us for professional cleaning and unblocking of drains, using a drain machine or rods.

## ELECTRICIAN

**Affordable Electrician**  
**Lazarus** 073 127 3921  
Issuing COC's (same day), installation of solar systems and inverters, repairs to faulty plugs, switches, lights, ovens, stoves and geysers, commercial and industrial electrical maintenance and repairs.

**Taylor Electrical** 0861 102 174  
Domestic, commercial, industrial, 083 380 9512  
compliance certificates, energy saving.

## FLOORING

**Turkish Carpet Gallery** 071 648 3050  
**Shop** 065 604 1999  
For classic, modern and abstract carpets, visit us at Kyalami Corner Shopping Centre, Upper Level, Shop 107. Our other services include washing, cleaning and carpet repairs done professionally.

## GARDEN & POOLS SERVICES

**BlueBerry Hill Solutions** WhatsApp 084 436 1498  
BlueBerry Hill Luxury Landscaping designs and maintains bespoke outdoor spaces for luxury estates, delivering timeless elegance, refined functionality, and meticulously curated landscapes for discerning homeowners who value beauty, precision and longevity. Visit: [www.blueberryhillsolutions.co.za](http://www.blueberryhillsolutions.co.za), or email: [info@blueberryhillsolutions.co.za](mailto:info@blueberryhillsolutions.co.za)

## Crewcut Gardens & Pools

**Peter** 082 450 1111  
**Mark** 082 789 7916  
Weekly garden and pool maintenance. We build new pools or remanbelite old ones. Suppliers of all pool spares, including pool pumps. Contact via email: [peter@crewcut.co.za](mailto:peter@crewcut.co.za) or [mark@crewcut.co.za](mailto:mark@crewcut.co.za)

## GAS SUPPLY SERVICES

**Falcon Gas** 073 818 3532  
Try our exceptional service for your LPG cylinder, refill/new cylinder supply. We comply to all Estate Safety & Security regulations. Free delivery to your home or business within Waterfall City. Email: [falcoegas.sa@etgworld.com](mailto:falcoegas.sa@etgworld.com)

## LOCKSMITH

**Brad's Lock and Key** 082 854 9898  
**All locks opened/fitted/replaced** 011 802 4114  
Also doors fitted/motors repaired/security gates custom-made. All work done by myself on-site. websites: [bradslock.co.za](http://bradslock.co.za)/[bradsgates.co.za](http://bradsgates.co.za) email: [bradslock@telkomsa.net](mailto:bradslock@telkomsa.net)

## PAINT & BUILDING SUPPLIES

**Colour Creations** 011 466 0065  
Paint, hardware, plumbing and building suppliers in Kyalami.

## PLUMBERS

**Plumb-Avid Projects** 012 654 2513  
071 875 0218  
The leading name in plumbing and maintenance, now offering municipal water backup and rainwater harvesting solutions.

**RDL Pro Plumbing** 067 839 5224  
Reliable plumbing services you can count on. Prompt, precise, and professionally delivered in Waterfall City, Fourways and Dainfern. No ghosting – just solutions.

**Sandton Plumbers** 083 460 9870  
Maintenance & Construction experts. Over 36 years' experience. PIRB Registered & Solar Certified Installer.

## PROPERTY MAINTENANCE

**Carl Allan Property Maintenance** 082 740 2356  
Based in Waterfall City. We take care of all your maintenance: steelwork, carpentry, painting and all related repair work. Contact Carl Allan. Email: [capm.renovate@gmail.com](mailto:capm.renovate@gmail.com)

# Waterfall City Contacts

Capacity	Name	Contact Number	Email
CEO - Waterfall Country Estate and Waterfall Village	Kenneth Gaynor	010 591 4671	kenneth@waterfallcountry.co.za
CEO - Waterfall Equestrian Estate	Gerhard du Toit	060 988 1059	gerhard@waterfallequestrian.co.za
General Manager - Waterfall Hills Mature Lifestyle Estate	Shae Braithwaite	081 810 0770	shae@whra.co.za
Estate Manager - Waterfall Valley Mature Lifestyle Estate	Christo van Jaarsveldt	064 958 7091	estatemanager@waterfallvalley.co.za
Estate Manager - The Polofields, Waterfall	Nadia Zelubowski	060 759 1580	estatemanager@polofieldswaterfall.co.za
Estate Manager - Kikuyu, Waterfall	Laurine Kleynhans	068 199 8553	estatemanager1@kikuyuwaterfall.co.za
Estate Manager - Munyaka, Waterfall	Karmen Richards	066 595 1525	munyakaem@munyakawaterfall.co.za
Estate Manager - Ellipse, Waterfall	Eugene van der Merwe	081 482 7831	estatemanager@waterfallellipse.co.za
Property Manager - Waterfall View	Anita Granger	071 595 8167	anita@elgaru.co.za
Security Manager	Shawn Benningfield	076 144 8197	shawn@waterfall.co.za
Sustainability Manager	Ruan Spies	060 966 4211	ruan@waterfall.co.za
Attacq Leasing	Justin Smith Lunga Sikutshwa	082 362 0800 083 200 2576	justin@attacq.co.za lunga@attacq.co.za



## emergency numbers

### DEDICATED WATERFALL CITY SERVICES

Fire Ops Waterfall City	083 622 6026
Netcare 911 Emergency Medical Services Waterfall City	010 209 8365

### PETS & ANIMAL RESCUE

Animals in Distress	011 466 0261
Midrand Veterinary Hospital	011 315 1575
SPCA	011 265 9935
SPCA Midrand Emergency	083 441 1564
Sunninghill Village Vet	011 803 1221

### OTHER SERVICES

Ambulance/Fire	10177
Ambulance/Fire/Metro Police	011 375 5911
Ambulance/Fire Midrand	011 847 4600
Carstenhof Clinic	011 655 5500
Crime Stop	086 001 0111
Midrand Trauma Support	076 979 9017
Netcare Emergency/Ambulance	082 911
Netcare Sunninghill Hospital	011 806 1500
Netcare Waterfall City Hospital	011 304 6600
Police/Flying Squad	10111
Police Midrand	011 347 1600

# Waterfall City Resale Agent Panel

## WATERFALL COUNTRY AND COUNTRY VILLAGE ESTATES

### AFRIQ PROPERTIES

Ntwanano Baloyi  
ntwanano@afriqproperties.co.za  
067 767 6746

### ALLEGIANCE PROPERTIES

Amy Pepler  
amyp@allegianceproperties.org  
082 374 9129  
Debbie Hough  
debbieh@allegianceproperties.org  
073 166 5435  
Julian Cornofsky  
julianc@allegianceproperties.org  
083 444 5141

### BLACK HOUSE REALTY

Bakang Makgopela  
bakang@blackhoureality.co.za  
072 255 1229

### BOTHMA AND CO REAL ESTATE

Vicky-Lee Coffen  
vickylee@bothmandco.com  
061 615 3248  
Winnie Bothma  
winnie@bothmandco.com  
082 259 9492

### BYRON THOMAS PROPERTIES

Megan O'Donovan  
megan@btproperties.co.za  
072 969 2428

### CHAS EVERITT MIDRAND

Nana Myeza  
nana.myeza@everitt.co.za  
063 719 6308  
Phiwe Myeza  
phiwe@everitt.co.za  
082 710 3463

### CHAS EVERITT SANDTON

Angelique van der Merwe  
angelique.vdm@everitt.co.za  
072 528 8130  
Robert Jones  
robert.j@everitt.co.za  
071 906 0930  
Tina de Waal  
tina.dw@everitt.co.za  
083 771 8709

### DORMEHL PHALANE PROPERTY GROUP

Dylan Coffen  
dylancoffen@dpg.co.za  
079 742 6197  
Wyde Benn  
wydebenn@dpg.co.za  
079 075 1192

### EAGLE DWELL PROPERTIES

Niran Adenigba  
niran@eagledwell.co.za  
078 443 1931

### EXP REALTY

Connie Peter  
connie.peter@expsouthafrica.co.za  
082 496 5827  
Deidre Bruintjies  
deidre.bruintjies@expsouthafrica.co.za  
081 889 2458  
Kym Clephane  
kym.clephane@expsouthafrica.co.za  
076 024 3862  
Martin Gunn  
martin.gunn@expsouthafrica.co.za  
082 925 3339

### FAIR PROPERTIES

Ahmed Ismael  
ahmed@fairproperties.co.za  
066 014 3807

### F.G. LATTO

Fraser Gourlay  
fraser@fglatto.co.za  
072 767 7489  
Noksie Gourlay  
noksie@fglatto.co.za  
078 332 6111  
Susan Kruger  
susan@fglatto.co.za  
072 956 8311

### FINE AND COUNTRY MIDRAND

Ikram Gabr  
ikram@gsapp.co.za  
082 228 7993  
Tanya Mohr  
tanya@gsapp.co.za  
083 276 3004

### GLOBAL EXCLUSIVE PROPERTIES

Fungai Ngehama  
fungai@globalexclusive.co.za  
072 860 4499

### HAMILTONS PROPERTY

Sakhile Shandu  
sakhile@hamiltons.co.za  
063 553 1897

### HARCOURTS LIFESTYLE MIDRAND

Danielle Wilde-Butt  
danielle.wilde@harcourts.co.za  
082 901 3119  
Hjalmar Venter  
hjalmar.v@harcourts.co.za  
072 468 4228  
Karen Kruger  
karen.kruger@harcourts.co.za  
072 603 2320

### HARPROP REAL ESTATE

Irmie Reif  
irmie@harprop.co.za  
082 905 1213

### JAWITZ PROPERTIES (TURNKEY)

Belinda Hickson  
belindah@jawitz.co.za  
082 835 0099  
Cathie Bester  
cathieb@jawitz.co.za  
083 616 0348  
Sue de Klerk  
sued@jawitz.co.za  
083 676 6012

### KAMONANDE MARKETING

Erik Crause  
erik@waterfall.co.za  
082 745 6324

### KBMO PROPERTIES

Lebogang Modipane  
kamo@kbmo.co.za  
062 733 6836  
Sibongile Mkhathjwa  
sibongile@kbmo.co.za  
069 582 9175

### KENT GUSH PROPERTIES

Nicky Makhathini  
nicky@kentgush.co.za  
073 832 0219

### LELO N CO REAL ESTATE CONSULTING

Josua Jansen  
josua.j@leloncorealestate.co.za  
071 371 0885  
Lelo Ndlovu  
lelo.n@leloncorealestate.co.za  
081 520 9477

### LP REALTY

Sibiya Sibiya  
sibiya@lprealty.co.za  
063 895 2041  
Taylor Davidson  
taylor@lprealty.co.za  
083 334 0078

### LUXLIV PROPERTY GROUP

Joelle McMaster  
joelle@luxlivproperty.com  
084 020 1111  
Laura Carr  
laura@luxlivproperty.com  
082 868 0135  
Marussia van der Merwe  
marussia@luxlivproperty.com  
083 384 0618

### LWP PROPERTIES

Alma Brown  
alma@lwp.co.za  
083 947 2726  
Brian Anthony Hickson  
brianh@lwp.co.za  
083 405 0000

### MANDATED PROPERTY GROUP

Pam Bingo  
pam@mandated.co.za  
079 216 7800

### NEXTGEN REAL ESTATE

Gena Peres  
gena@nextgenrealestate.co.za  
074 866 5874

### NTSIKIE MGAYIYA REAL ESTATE

Ntsikie Mgayiya  
ntsikie.mgayiya@nmrealestate.co.za  
079 101 0921

### PIVOTAL PROPERTIES

Elias Ngoma  
elias@pivotalproperties.co.za  
083 200 7100

### PLATINUM RESIDENTIAL

Andrew Pearse  
andrew@platinum.co.za  
083 652 8888  
Annalize Morris  
annalize@platinum.co.za  
082 347 7305  
Graeme Bunyard (Vacant Land)  
graeme@platinum.co.za  
082 882 5861  
Melanie Pearse  
melanie@platinum.co.za  
083 390 0000  
Steven McLaren  
steven@platinum.co.za  
083 233 8888

### PTL GROUP

Linden Mdumela  
linden@ptlgroup.co.za  
065 954 7743

### REALNET RAINMAKER

Jan Thorp  
jant@realnet.co.za  
083 300 1971  
Tracy Manion  
tracy.manion@realnet.co.za  
082 801 5184

### REMAX ADVANTAGE

Jelena Frasco  
frasco@remax-advantage.co.za  
083 327 0623  
Loline Merifield  
loline@remax-advantage.co.za  
076 579 5543  
Nonjabulo Masakhane  
nonjabulo@remax-advantage.co.za  
067 985 2062

### REMAX ONE

Ian Ross  
ianross@remaxone.co.za  
083 676 5766  
Refilwe Tilo  
refilwe@remaxone.co.za  
061 496 9155

### REMAX ONE HUNDRED

Nteseng Chuene  
ntesengc@remax-onehundred.co.za  
068 652 7030

### ROSENVELDT PROPERTIES

Matt van Rosenveldt  
matt@rosenveldtproperties.co.za  
081 035 0488  
Ryan van Rosenveldt  
ryan@rosenveldtproperties.co.za  
079 219 5775

### SAPP REALTY

Ahvi Matabadal  
ahvi@sapprg.co.za  
082 082 8700

### SEEFF SANDTON

Kennedy Otorbor  
ken.otorbor@seeff.com  
076 069 1049

### SPECTRUM REALTY

Nandipha Ngcobo  
nandiphan@spectrumrealty.co.za  
071 482 1683

### SUFEMI PROPERTIES

Chantelle Mhlanga  
chantelle@sufemiproperties.co.za  
079 109 0318

### THIS IS ME PROPERTIES

Jessica Hofmeyr  
jessica@thisismeproperties.co.za  
082 937 4760

### TYSON PROPERTIES

Nastasjia Peters  
tash@tysonprop.co.za  
063 185 4020

### VELICIAE LUXURY REAL ESTATE

Kimlynn Kemp  
kimlynn@veliciae.com  
082 250 8667

### KIKUYU

### AFRIQ PROPERTIES

Ntwanano Baloyi  
ntwanano@afriqproperties.co.za  
067 767 6746

### AMALGA REAL ESTATE

Maureen Babane  
maureen@amalgarealestates.co.za  
079 842 5104

### CENTURY 21

Amanda Kumalo  
amanda.kumalo@century21.co.za  
060 700 6516  
Jacques Loubser  
jacques.loubser@century21.co.za  
082 266 6272  
Suhail Patel  
suhail.patel@century21.co.za  
063 833 2848

### CHAS EVERITT MIDRAND

Darren Jugdhaw  
darren@everitt.co.za  
067 252 9652  
Phiwe Myeza  
phiwe@everitt.co.za  
082 710 3463

### CHAS EVERITT SANDTON

Angelique van der Merwe  
angelique.vdm@everitt.co.za  
072 528 8130  
Babalwa Yakopi  
babalwa@everitt.co.za  
079 177 8513  
Lulama Konza  
lulama.konza@everitt.co.za  
064 515 6126

**DORMEHL PHALANE PROPERTY GROUP**

**Dylan Coffen**  
dylancoffen@dpg.co.za  
079 742 6197  
**Wyde Benn**  
wydebenn@dpg.co.za  
079 075 1192

**EAGLE DWELL PROPERTIES**

**Niran Adenigba**  
niran@eagledwell.co.za  
078 443 1931

**EXP REALTY**

**Deidre Bruintjies**  
deidre.bruintjies@expsouthafrica.co.za  
081 889 2458  
**Martin Gunn**  
martin.gunn@expsouthafrica.co.za  
082 925 3339

**HARCOURTS LIFESTYLE MIDRAND**

**Danielle Wilde-Butt**  
danielle.wilde@harcourts.co.za  
082 901 3119  
**Megan Craft**  
megan.craft@harcourts.co.za  
082 407 9622  
**Tumelo Malefo**  
tumelo.malefo@harcourts.co.za  
074 063 5819

**HARPROP REAL ESTATE**

**Irmi Reif**  
irmi@harprop.co.za  
082 905 1213

**JAWITZ (MIDRAND)**

**Bijou Oja**  
bijou@jawitz.co.za  
064 988 6352

**JAWITZ PROPERTIES (TURNKEY)**

**Belinda Hickson**  
belindah@jawitz.co.za  
082 835 0099  
**Cathie Bester**  
cathieb@jawitz.co.za  
083 616 0348

**KELLER WILLIAMS EDGE**

**Uhuru Matlhaji**  
uhuru.matlhaji@kwsa.co.za  
078 959 9407

**KENT GUSH PROPERTIES**

**Elisha Paul**  
elisha@kentgush.co.za  
076 498 0137

**LANTANA PROPERTIES**

**Masha Nekhavhambe**  
masha@lantanaproperties.co.za  
083 705 0031

**LJT PROPERTIES**

**Lawrence Toendepi**  
lawrencet@ljtproperties.co.za  
076 404 0810

**LUXLIV PROPERTY GROUP**

**Joelle McMaster**  
joelle@luxlivproperty.com  
084 020 1111  
**Marussia van der Merwe**  
marussia@luxlivproperty.com  
083 384 0618  
**Victoria Zwane**  
victoria@luxlivproperty.com  
061 690 1170

**LWP PROPERTIES**

**Alma Brown**  
alma@lwp.co.za  
083 947 2726  
**Brian Anthony Hickson**  
brianh@lwp.co.za  
083 405 0000

**MANDATED PROPERTY GROUP**

**Pam Bingo**  
pam@mandated.co.za  
079 216 7800

**NATURAL PROPERTY**

**Nina Chetty**  
nina@naturalproperty.co.za  
082 560 1373  
**Slade Brookes**  
slade@naturalproperty.co.za  
083 612 2515

**NTSIKIE MGAYIYA REAL ESTATE**

**Ntsikie Mgaya**  
ntsikie.mgaya@nmrealestate.co.za  
079 101 0921

**O-YES PROPERTIES**

**Nalini Bageloo**  
nalini@o-yes.co.za  
083 287 5624

**RAWSON KYALAMI-CENTRAL**

**Nirvan Bhudai**  
nirvan.bhudai@rawson.co.za  
082 484 5294

**RAWSON PROPERTIES PAULSHOF**

**Hermann Djiendeu**  
hermann.dj@rawson.co.za  
083 445 0425  
**Marriam B Khan**  
marriam.khan@rawson.co.za  
073 160 8822  
**Ruth Kenda**  
ruth.kenda@rawson.co.za  
064 764 2105

**REALNET RAINMAKER**

**Maisaka Neshivhambe**  
maisakan@realnet.co.za  
072 429 3084

**REMAX EVOLVE**

**Rikus Basson**  
rikus@remax-evolve.co.za  
082 650 2911

**REMAX MASTERS**

**Cevana Madeira**  
cevana@remax-masters.co.za  
078 232 4487  
**Victoria Serfontein**  
victoria@remax-masters.co.za  
076 481 5171

**REMAX ONE**

**Ian Ross**  
ianross@remaxone.co.za  
083 676 5766  
**Jenetha Mahabeer**  
jenetha@remaxone.co.za  
083 676 5766  
**Nonny Mtshali**  
nonny@remaxone.co.za  
081 727 6414

**SA NATIONAL REALTORS GROUP**

**Belinda Livingstone**  
belinda.livingstone@sanrg.co.za  
083 463 8362

**SAPP REALTY**

**Ahvi Matabadal**  
ahvi@sapprg.co.za  
082 082 8700

**SEEFF SANDTON**

**Kennedy Otorbor**  
ken.otorbor@seeff.com  
076 069 1049

**SOTHEBYS FOURWAYS**

**Candice Delpont**  
candice.d@sothebysrealty.co.za  
071 865 2274  
**Yaqshaan Sukdev**  
yaqshaan@sothebysrealty.co.za  
068 333 3984

**TITAN PROPERTY GROUP**

**Adrian Musper**  
adrian.m@titan.co.za  
065 028 6691

**TYSON PROPERTIES**

**Nastasja Peters**  
tash@tysonprop.co.za  
063 185 4020

**VERED ESTATES**

**Ontiretse Marumo**  
ontiretse@vered.co.za  
078 380 1150

**MUNYAKA**
**AFRIQ PROPERTIES**

**Ntwanano Baloyi**  
ntwanano@afriqproperties.co.za  
067 767 6746

**BLACK HOUSE REALTY**

**Bakang Makgopela**  
bakang@blackhouserealty.co.za  
072 255 1229

**CHAS EVERITT SANDTON**

**Angelique van der Merwe**  
angelique.vdm@everitt.co.za  
072 528 8130  
**Karolina Basinka**  
karolina.f@everitt.co.za  
076 585 3341  
**Robert Jones**  
robert.j@everitt.co.za  
071 906 0930

**CHRIS SHELTER PROPERTIES**

**Chrishelda Phalafala**  
chrishelda@chrisselterproperties.com  
079 676 0025

**CLOCKWORK PROPERTIES**

**Fahmida Cara**  
fahmida.cara@clockworkproperties.co.za  
082 770 2786

**DORMEHL PHALANE PROPERTY GROUP**

**Dylan Coffen**  
dylancoffen@dpg.co.za  
079 742 6197  
**Wyde Benn**  
wydebenn@dpg.co.za  
079 075 1192

**EAGLE DWELL PROPERTIES**

**Niran Adenigba**  
niran@eagledwell.co.za  
078 443 1931

**EXP REALTY**

**Deidre Bruintjies**  
deidre.bruintjies@expsouthafrica.co.za  
081 889 2458  
**Martin Gunn**  
martin.gunn@expsouthafrica.co.za  
082 925 3339

**HARCOURTS LIFESTYLE MIDRAND**

**Mcedisi Mabena**  
mcedisi.mabena@harcourts.co.za  
071 030 8552  
**Megan Craft**  
megan.craft@harcourts.co.za  
082 407 9622

**HARPROP REAL ESTATE**

**Irmi Reif**  
irmi@harprop.co.za  
082 905 1213

**HENRENE PROPERTIES**

**Irene Petronella Minnaar**  
irene@henrene.co.za  
082 772 5715

**JAWITZ (MIDRAND)**

**Bijou Oja**  
bijou@jawitz.co.za  
064 988 6352

**JAWITZ PROPERTIES (TURNKEY)**

**Belinda Hickson**  
belindah@jawitz.co.za  
082 835 0099  
**Cathie Bester**  
cathieb@jawitz.co.za  
083 616 0348

**KENT GUSH PROPERTIES**

**Elisha Paul**  
elisha@kentgush.co.za  
076 498 0137

**LJT PROPERTIES**

**Lawrence Toendepi**  
lawrencet@ljtproperties.co.za  
076 404 0810

**LUXLIV PROPERTY GROUP**

**Joelle McMaster**  
joelle@luxlivproperty.com  
084 020 1111  
**Marussia van der Merwe**  
marussia@luxlivproperty.com  
083 384 0618  
**Victoria Zwane**  
victoria@luxlivproperty.com  
061 690 1170

**LWP PROPERTIES**

**Alma Brown**  
alma@lwp.co.za  
083 947 2726  
**Brian Anthony Hickson**  
brianh@lwp.co.za  
083 405 0000

**NATURAL PROPERTY**

**Nina Chetty**  
nina@naturalproperty.co.za  
082 560 1373  
**Slade Brookes**  
slade@naturalproperty.co.za  
083 612 2515

**NTSIKIE REAL ESTATE**

**Ntsikie Mgaya**  
ntsikie.mgaya@nmrealestate.co.za  
079 101 0921

**ONLY REALTY GROUP**

**Jessica Uglietti**  
jessica@orgroup.co.za  
073 343 8758  
**Soeraya Williams**  
soeraya.w@orgroup.co.za  
082 708 9749

**O-YES PROPERTIES**

**Nalini Bageloo**  
nalini@o-yes.co.za  
083 287 5624

**PLATINUM RESIDENTIAL**

**Graeme Bunyard**  
graeme@platinum.co.za  
082 882 5861

**PTL GROUP**

**Linden Mdemela**  
linden@ptlgroup.co.za  
065 954 7743

**RAWSON KYALAMI**

**Nirvan Bhudai**  
nirvan.bhudai@rawson.co.za  
082 484 5294

**RAWSON PAULSHOF**

**Hermann Djiendeu**  
hermann.dj@rawson.co.za  
083 445 0425

# Waterfall City Resale Agent Panel

## REALNET RAINMAKER

Tracy Ogboro  
tracyo@realnet.co.za  
081 326 5100

## REMAX ONE

Ayana Ghood  
ayana@remaxone.co.za  
065 904 0024  
Ian Ross  
ianross@remaxone.co.za  
083 676 5766  
Jenetha Mahabeer  
jenetha@remaxone.co.za  
084 952 3899

## REMAX ONE HUNDRED

Nteseng Chuene  
ntesengc@remax-onehundred.co.za  
068 652 7030

## SA NATIONAL REALTORS GROUP

Erika De Groot  
erika.degroot@sanrg.co.za  
082 743 3180  
Michelle La Vita  
michelle.lavita@sanrg.co.za  
082 885 0792

## SEEFF SANDTON

Kennedy Otorbor  
ken.otobor@seeff.com  
076 069 1049

## SOTHEBYS FOURWAYS

Candice Delport  
candice.d@sothebysrealty.co.za  
071 865 2274  
Yaqshaan Sukdev  
yaqshaan@sothebysrealty.co.za  
068 333 3984

## SUFEMI PROPERTIES

Chantelle Mhlanga  
chantelle@sufemiproperties.co.za  
079 109 0318

## TYSON PROPERTIES

Nastasjia Peters  
tash@tysonprop.co.za  
063 185 4020

## THE POLOFIELDS

## AFRIQ PROPERTIES

Ntwanano Baloyi  
ntwanano@afriqproperties.co.za  
067 767 6746

## BLACK HOUSE REALTY

Bakang Makgopela  
bakang@blackhouserealty.co.za  
072 255 1229

## BOTHMA AND CO REAL ESTATE

Vicky-Lee Coffen  
vickylee@bothmandco.com  
061 615 3248  
Winnie Bothma  
winnie@bothmandco.com  
082 259 9492

## CHAS EVERITT MIDRAND

Phiwe Myeza  
phiwe@everitt.co.za  
082 710 3463

## CHAS EVERITT SANDTON

Angelique van der Merwe  
angelique.vdm@everitt.co.za  
072 528 8130  
Babalwa Yakopi  
babalwa@everitt.co.za  
079 177 8513  
Lulama Konza  
lulama.konza@everitt.co.za  
064 515 6126

## CPS PROPERTIES

Maria Congia  
maria@cpsprop.co.za  
082 937 0360

## DORMEHL PHALANE PROPERTY GROUP

Dylan Coffen  
dylancoffen@dpg.co.za  
079 742 6197  
Wyde Benn  
wydebenn@dpg.co.za  
079 075 1192

## EAGLE DWELL PROPERTIES

Niran Adenigba  
niran@eagledwell.co.za  
078 443 1931

## EXP REALTY

Bryan Milambwe  
bryan.milambwe@expsouthafrica.co.za  
074 042 0311  
Deidre Bruintjies  
deidre.bruintjies@expsouthafrica.co.za  
081 889 2458  
Martin Gunn  
martin.gunn@expsouthafrica.co.za  
082 925 3339

## GALETTI COMMERCIAL REAL ESTATE

David Dawson  
david.dawson@galetti.co.za  
082 385 2897

## GLOBAL EXCLUSIVE PROPERTIES

Fungai Ngehama  
fungai@globalexclusive.co.za  
072 860 4499

## HARCOURTS LIFESTYLE MIDRAND

Candice James  
candice.james@harcourts.co.za  
074 134 6459  
Danielle Wilde-Butt  
danielle.wilde@harcourts.co.za  
082 901 3119  
Karen Kruger  
karen.kruger@harcourts.co.za  
072 603 2320

## HARPROP REAL ESTATE

Irmi Reif  
irmi@harprop.co.za  
082 905 1213

## JAWITZ (MIDRAND)

Bijou Oja  
bijou@jawitz.co.za  
064 988 6352

## JAWITZ PROPERTIES (TURNKEY)

Belinda Hickson  
belindah@jawitz.co.za  
082 835 0099  
Cathie Bester  
cathieb@jawitz.co.za  
083 616 0348

## KELLER WILLIAMS EDGE

Uhuru Matlhaji  
uhuru.matlhaji@kwsa.co.za  
078 959 9407

## KELLER WILLIAMS EXPLORE

Diana Musara  
diana.musara@kwsa.co.za  
082 900 2329

## KENT GUSH PROPERTIES

Elisha Paul  
elisha@kentgush.co.za  
076 498 0137

## LAW REAL ESTATE

Brent Scott  
brent@lawrealestate.co.za  
082 787 3784  
Darren Kroll  
darren@lawrealestate.co.za  
082 772 3270  
Laura Wiegand  
laura@lawrealestate.co.za  
083 365 1733

## LEOPOLDA PROPERTIES

Wing Ka Chan  
celia.leopolda@gmail.com  
071 724 0470

## LUXLIV PROPERTY GROUP

Joelle McMaster  
joelle@luxlivproperty.com  
084 020 1111  
Marussia van der Merwe  
marussia@luxlivproperty.com  
083 384 0618  
Victoria Zwane  
victoria@luxlivproperty.com  
061 690 1170

## LWP PROPERTIES

Alma Brown  
alma@lwp.co.za  
083 947 2726  
Brian Anthony Hickson  
brianh@lwp.co.za  
083 405 0000

## MANDATED PROPERTY GROUP

Pam Bingo  
pam@mandated.co.za  
079 216 7800

## NATURAL PROPERTY

Nina Chetty  
nina@naturalproperty.co.za  
082 560 1373  
Slade Brookes  
slade@naturalproperty.co.za  
083 612 2515

## NTSIKIE MGAYIYA REAL ESTATE

Ntsikie Mgayiya  
ntsikie.mgayiya@nmrealestate.co.za  
079 101 0921

## OBM PROPERTIES

Refilwe Nsibandwe  
refilwe@obmproperties.co.za  
073 205 1802

## O-YES PROPERTIES

Nalini Bageloo  
nalini@o-yes.co.za  
083 287 5624

## PLATINUM RESIDENTIAL

Graeme Bunyard  
graeme@platinum.co.za  
082 882 5861

## PLUM REALTY

James Plummer  
james@plumrealty.co.za  
083 785 6231

## PROPCORE REAL ESTATE

Lebohang Oliphant  
lebohang@propcore.co.za  
076 590 2638

## PROPERTY.COZA UNLIMITED

Fahmida Omar  
fahmida.omar@propertycoza.co.za  
083 454 9578

## PTL GROUP

Linden Mdemela  
linden@ptlgroup.co.za  
065 954 7743

## RAWSON PAULSHOF

Deriek Daniels  
deriek.daniels@rawson.co.za  
061 493 5032  
Hermann Djiendou  
hermann.dj@rawson.co.za  
083 445 0425

## REMAX ONE

Cooper van Heerden  
cooper@remaxone.co.za  
078 931 0744  
Ian Ross  
ianross@remaxone.co.za  
083 676 5766  
Refilwe Tilo  
refilwe@remaxone.co.za  
061 496 9155

## REMAX ONE HUNDRED

Jennifer Ramsay  
jennyramsay@remax-onehundred.co.za  
082 880 6221  
Nteseng Chuene  
ntesengc@remax-onehundred.co.za  
068 652 7030

## SA NATIONAL REALTORS GROUP

Belinda Livingstone  
belinda.livingstone@sanrg.co.za  
083 463 8362  
Erika de Groot  
erika.degroot@sanrg.co.za  
082 743 3180

## SAPP REALTY

Ahvi Matabadal  
ahvi@sapprg.co.za  
082 082 8700

## SEEFF SANDTON

Kennedy Otorbor  
ken.otobor@seeff.com  
076 069 1049

## SOTHEBYS FOURWAYS

Christopher Stewart  
chris.s@sothebysrealty.co.za  
084 402 9543  
Yaqshaan Sukdev  
yaqshaan@sothebysrealty.co.za  
068 333 3984

## SUFEMI PROPERTIES

Chantelle Mhlanga  
chantelle@sufemiproperties.co.za  
079 109 0318

## TYSON PROPERTIES

Nastasjia Peters  
tash@tysonprop.co.za  
063 185 4020  
Rickus Bouwer  
rickus@tysonprop.co.za  
082 520 3737

## WE TRADE PROPERTY

Wendy van Heerden  
wendyv@wetradeproperty.co.za  
083 443 2231

## WINNIE BERVELY REAL ESTATE

Winnie Sediela  
winnie@winniebervelyrealestate.co.za  
060 579 5133

## ELLIPSE TOWERS

## AFRIQ PROPERTIES

Ntwanano Baloyi  
ntwanano@afriqproperties.co.za  
067 767 6746

## BLACK HOUSE REALTY

Bakang Makgopela  
bakang@blackhouserealty.co.za  
072 255 1229

**CHAS EVERITT SANDTON**

Angelique van der Merwe  
angelique.vdm@everitt.co.za  
072 528 8130  
Karolina Basinka  
karolina.f@everitt.co.za  
076 585 3341  
Robert Jones  
robert.j@everitt.co.za  
071 906 0930

**DORMEHL PHALANE PROPERTY GROUP**

Dylan Coffen  
dylancoffen@dpg.co.za  
079 742 6197  
Wyde Benn  
wydebenn@dpg.co.za  
079 075 1192

**EAGLE DWELL PROPERTIES**

Niran Adenigba  
niran@eagledwell.co.za  
078 443 1931

**EXP REALTY**

Deidre Bruintjies  
deidre.bruintjies@expsouthafrica.co.za  
081 889 2458  
Martin Gunn  
martin.gunn@expsouthafrica.co.za  
082 925 3339

**F.G. LATTO**

Fraser Gourlay  
fraser@fglatto.co.za  
072 767 7489  
Noksie Gourlay  
noksie@fglatto.co.za  
078 332 6111  
Susan Kruger  
susan@fglatto.co.za  
072 956 8311

**HARCOURTS LIFESTYLE MIDRAND**

Danielle Wilde-Butt  
danielle.wilde@harcourts.co.za  
082 901 3119  
Hjalmar Venter  
hjalmar.v@harcourts.co.za  
072 468 4228  
Karen Kruger  
karen.kruger@harcourts.co.za  
072 603 2320

**HARPROP REAL ESTATE**

Irmi Reif  
irmi@harprop.co.za  
082 905 1213

**JAWITZ (MIDRAND)**

Bijou Oja  
bijou@jawitz.co.za  
064 988 6352

**JAWITZ PROPERTIES (TURNKEY)**

Belinda Hickson  
belindah@jawitz.co.za  
082 835 0099  
Cathie Bester  
cathieb@jawitz.co.za  
083 616 0348

**KAMONANDE MARKETING**

Erik Crause  
erik@waterfall.co.za  
082 745 6324

**KENT GUSH PROPERTIES**

Nicky Makhathini  
nicky@kentgush.co.za  
073 832 0219

**LUXLIV PROPERTY GROUP**

Joelle McMaster  
joelle@luxlivproperty.com  
084 020 1111  
Marussia van der Merwe  
marussia@luxlivproperty.com  
083 384 0618  
Victoria Zwane  
victoria@luxlivproperty.com  
061 690 1170

**LWP PROPERTIES**

Alma Brown  
alma@lwp.co.za  
083 947 2726  
Brian Anthony Hickson  
brianh@lwp.co.za  
083 405 0000

**NTSIKIE MGAYIYA REAL ESTATE**

Ntsikie Mgaya  
ntsikie.mgaya@nmrealestate.co.za  
079 101 0921

**PLATINUM RESIDENTIAL**

Graeme Bunyard  
graeme@platinum.co.za  
082 882 5861

**PROPERTY CLOUD**

Cealan Fortuin  
cealan@propertycloud.co.za  
083 200 8752

**PTL GROUP**

Linden Mdemela  
linden@ptlgroup.co.za  
065 954 7743

**REMAX ONE**

Cooper van Heerden  
cooper@remaxone.co.za  
078 931 0744  
Ian Ross  
ianross@remaxone.co.za  
083 676 5766

**REMAX ONE HUNDRED**

Malesela Manaka  
maleselam@remax-onehundred.co.za  
061 508 1617  
Nteseng Chuene  
ntesengc@remax-onehundred.co.za  
068 652 7030

**SEEFF SANDTON**

Kennedy Otorbor  
ken.otobor@seeff.com  
076 069 1049

**TYSON PROPERTIES**

Nastasja Peters  
tash@tysonprop.co.za  
063 185 4020

**VELICIAE LUXURY REAL ESTATE**

Kimlynn Kemp  
kimlynn@veliciae.com  
082 250 8667

**WATERFALL VIEW**
**BLACK HOUSE REALTY**

Bakang Makgopela  
bakang@blackhouserealty.co.za  
072 255 1229

**DORMEHL PHALANE PROPERTY GROUP**

Dylan Coffen  
dylancoffen@dpg.co.za  
079 742 6197  
Wyde Benn  
wydebenn@dpg.co.za  
079 075 1192

**EXP REALTY**

Bryan Milambwe  
bryan.milambwe@expsouthafrica.co.za  
074 042 0311  
Deidre Bruintjies  
deidre.bruintjies@expsouthafrica.co.za  
081 889 2458  
Martin Gunn  
martin.gunn@expsouthafrica.co.za  
082 925 3339

**HARCOURTS LIFESTYLE MIDRAND**

Danielle Wilde-Butt  
danielle.wilde@harcourts.co.za  
082 901 3119  
Hjalmar Venter  
hjalmar.v@harcourts.co.za  
072 468 4228  
Karen Kruger  
karen.kruger@harcourts.co.za  
072 603 2320

**JUST PROPERTY HERITAGE**

Ally Mafela Ndou  
allyn@just.property  
076 048 2657

**NTSIKIE MGAYIYA REAL ESTATE**

Ntsikie Mgaya  
ntsikie.mgaya@nmrealestate.co.za  
079 101 0921

**PIVOTAL PROPERTIES**

Elias Ngoma  
elias@pivotalproperties.co.za  
083 200 7100

**PLUS GROUP PROPERTIES**

Queen Mtsweni  
queenm@plusgroup.co.za  
079 724 3728

**PTL GROUP**

Linden Mdemela  
linden@ptlgroup.co.za  
065 954 7743

**REALNET RAINMAKER**

Maisaka Netshivhambe  
maisakan@realnet.co.za  
072 429 3084  
Tracy Ogboro  
tracyo@realnet.co.za  
081 326 5100

**REMAX CAPITAL**

Amanda Katergerakis  
amanda@remaxcapital.co.za  
082 376 9473

**REMAX ONE**

Ian Ross  
ianross@remaxone.co.za  
083 676 5766

**REMAX ONE HUNDRED**

Nteseng Chuene  
ntesengc@remax-onehundred.co.za  
068 652 7030

**ROOT-X AUCTIONERS**

Alec Monyela  
alec@rootx.co.za  
082 053 2519

**SEEFF SANDTON**

Kennedy Otorbor  
ken.otobor@seeff.com  
076 069 1049

**SOTHEBYS FOURWAYS**

Yaqshaan Sukdev  
yaqshaan@sothebysrealty.co.za  
068 333 3984

**TYSON PROPERTIES**

Nastasja Peters  
tash@tysonprop.co.za  
063 185 4020



An updated list is also available on the Waterfall City Website and Community Portal.  
For any queries, contact: [agents@waterfall.co.za](mailto:agents@waterfall.co.za)

REMEMBER TO SUPPORT YOUR LOCAL RESTAURANTS WHEN YOU FEEL LIKE A NIGHT OUT!

# JAN/FEB RESTAURANT COMPETITION

for our Waterfall City residents

The question for this month's competition:

**Which prestigious regional award did Waterfall City win for the second consecutive year at the International Property Awards?**

Please email your answer along with your full name, your cell number, your residential development name and your stand or apartment number, detailing 'Waterfall City Restaurant Competition' in the subject line, to: [competitions@eiapublishing.co.za](mailto:competitions@eiapublishing.co.za). The winner will receive a R500 meal voucher from one of our participating restaurants.

### Terms and Conditions:

1. Vouchers cannot be exchanged for cash.
2. Portions of the monetary value of the voucher cannot be refunded as "change".
3. Bookings need to be made in advance with the restaurant detailed on the voucher.
4. Service charges/gratuities are not included, regardless of any balance left over after the meal.
5. Vouchers will be numbered. Please provide your voucher number when you make your reservation.
6. The competition is open to all Waterfall City residents over the age of 18.
7. Indemnity: The publishers, Waterfall City and any other associated parties are not responsible for the fulfilment of the service from the restaurant once the prize has been awarded.
8. The winner will be notified by email.



PHOTO BY PHOTO BY QUENTIN MAHEON/UNSPLASH

**CONGRATULATIONS TO: Tshisi Nemukula, our Nov/Dec winner of a R500 voucher.**

DISCOVER THE ELIXIR OF **you** youth

WIN WITH SKIN RENEWAL - WATERFALL!



THE ELIXIR OF YOU

**ENTER TO WIN A TREATMENT VALUED AT R7,000!**

**Skin Renewal Waterfall**, one of South Africa's leading medical aesthetic clinics, is celebrating 20 years of transformation. To mark the occasion, one lucky Waterfall City resident will win a treatment valued at R7,000 - the perfect way to relax and pamper yourself. **To enter, simply answer the following question:** How many clinics does Skin Renewal have nationwide?

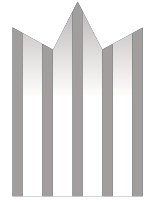
Please email your answer along with your full name, your cell number, your residential development name and your stand or apartment number, detailing 'Skin Renewal Competition' in the subject line, to: [competitions@eiapublishing.co.za](mailto:competitions@eiapublishing.co.za). All correct entries will be entered into a draw, and the winner will be notified by email. Closing date: 1 March 2026

[skinrenewal.co.za](http://skinrenewal.co.za)



T's & C's Apply.

**SKINrenewal**  
THE ELIXIR OF YOU



**TYSON**  
PROPERTIES

**A PROPERTY  
SEARCH CAN  
ONLY TAKE  
YOU SO FAR,**

but we will  
take you **home.**

Grab our special offer  
at **JUST 2.5% + VAT!**

**LET'S TALK  
WATERFALL CITY**

**Nastasjia Peters**

063 185 4020 

tash@tysonprop.co.za 


*Africa's Largest Selection of Patio Furniture & Accessories*

# Patio

## WAREHOUSE

[www.patiowarehouse.co.za](http://www.patiowarehouse.co.za)



 WHATSAPP US

Pretoria - 012 749 3120 | Centurion - 012 657 9400 | Randburg - 011 801 0820 | Cape Town - 021 526 7240

Somerset West - 021 840 4160 | Umhlanga - 031 566 8550 | George - 044 010 0102